

1612B00-03

TRANSFORMER TAPPING OPTIONS

Pt No 33653 (TYPE AA)

TAP	NOM 50/60HZ	50HZ	60HZ
W	220/230	176-242	198-259
X	380/400	304-418	342-446
Y	415/420	332-457	374-487
Z	440/460	352-484	396-517

FUSE QF2 - 250mA ANTI-SURGE

Pt No 33642 (TYPE BB)

TAP	NOM 50/60HZ	50HZ	60HZ
W	346/380	285-388	321-419
X	480/500	406-552	432-564
Y	240/240	192-261	216-282
Z*	550/575	445-605	501-654

FUSE QF2 - 250mA ANTI-SURGE
* 150mA ANTI-SURGE

Pt No 31836 (TYPE C)

TAP	NOM 50/60HZ	50HZ	60HZ
X	660/660	534-726	600-726

FUSE QF2 - 150mA ANTI-SURGE

ALL TRANSFORMER TYPES - QF4 500mA SLOW BLOW
WHEN FITTED QF1 AND QF3 WILL BE AS QF2.

MAX EXTERNAL LOAD ON TERMINALS 4 & 5 TO BE 5VA.

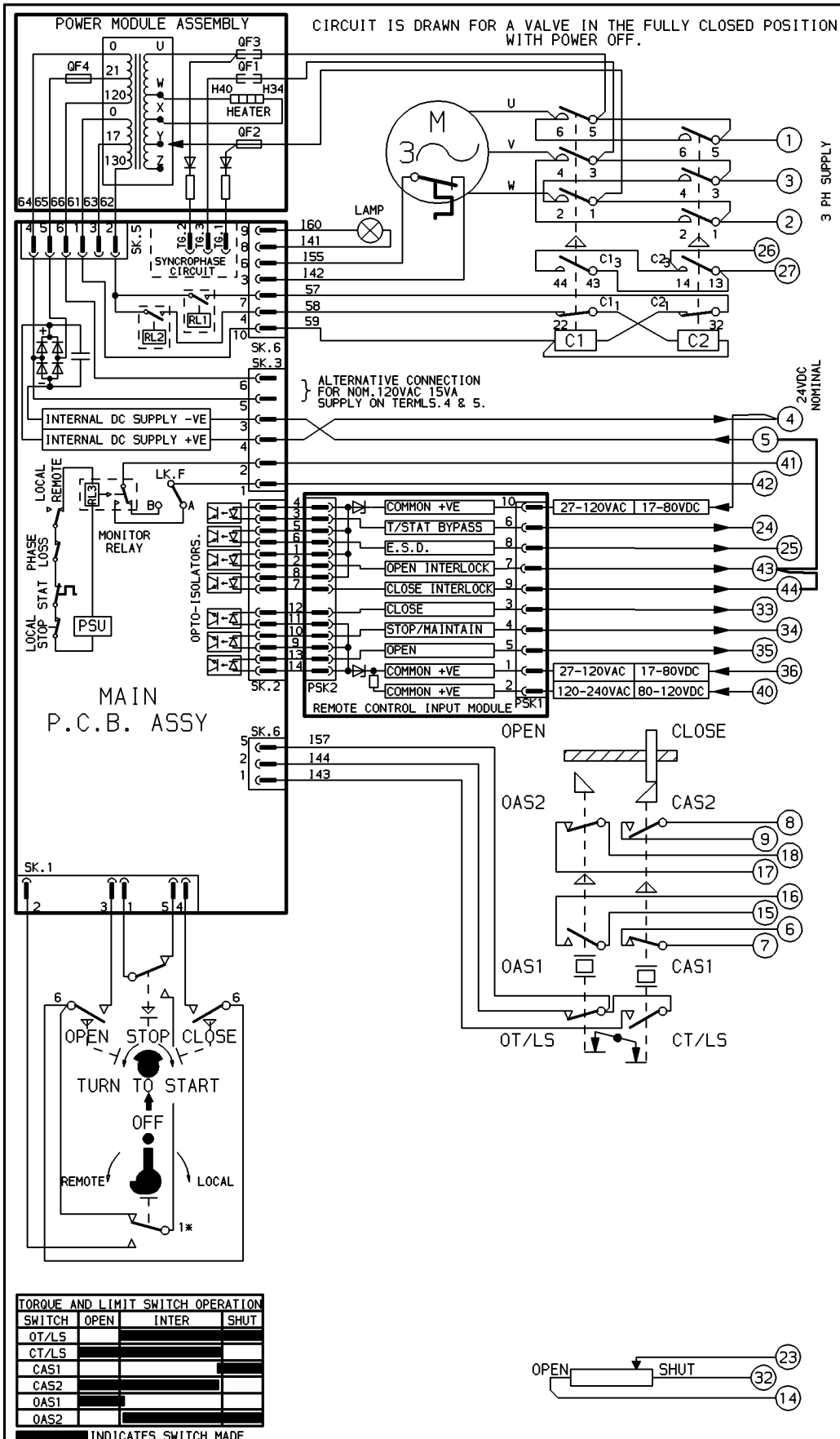
- O - OPEN
- C - CLOSE
- C1 & C2 - CONTACTOR COILS.
- T/LS - TORQUE/LIMITSWITCH
- AS1 - AUXILIARY LIMIT SWITCH MAKE CONTACT AT END OF TRAVEL
- AS2 - AUXILIARY LIMIT SWITCH BREAK CONTACT AT END OF TRAVEL

WIRES ARE IDENTIFIED AT EACH END BY TERMINAL No. OR BY WIRE No. SHOWN

FOR TYPICAL REMOTE CONTROL INDICATING, MONITORING AND ALARM CIRCUITS SEE PUBLICATION AE/2

CONTROL SIGNAL THRESHOLD VOLTAGES
MAXIMUM 'OFF' 3V.
MINIMUM CONTROL SIGNAL 300mS.

CIRCUIT IS DRAWN FOR A VALVE IN THE FULLY CLOSED POSITION WITH POWER OFF.



TORQUE AND LIMIT SWITCH OPERATION

SWITCH	OPEN	INTER	SHUT
OT/LS			
CT/LS			
CAS1			
CAS2			
OAS1			
OAS2			

INDICATES SWITCH MADE

No	DATE	REVISION
03		SIMILAR TO 1612B00 JOB No --- FUSE RATINGS REVISED. 041091



ROTORK CONTROLS LTD
BATH ENGLAND, BA1 3JQ.
tel (0225) 428451

ROTORK CONTROLS INC
ROCHESTER, NY 14624.
tel (716) 328-1550

DRAWN J.R
DATE 110589

CHECKED K.S
DATE 110589

1612B00 WITH NEGATIVE SWITCHING

CIRCUIT DIAGRAM No -REV

1612B00-03