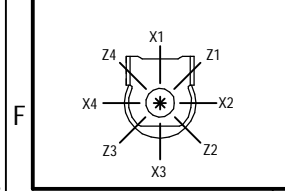
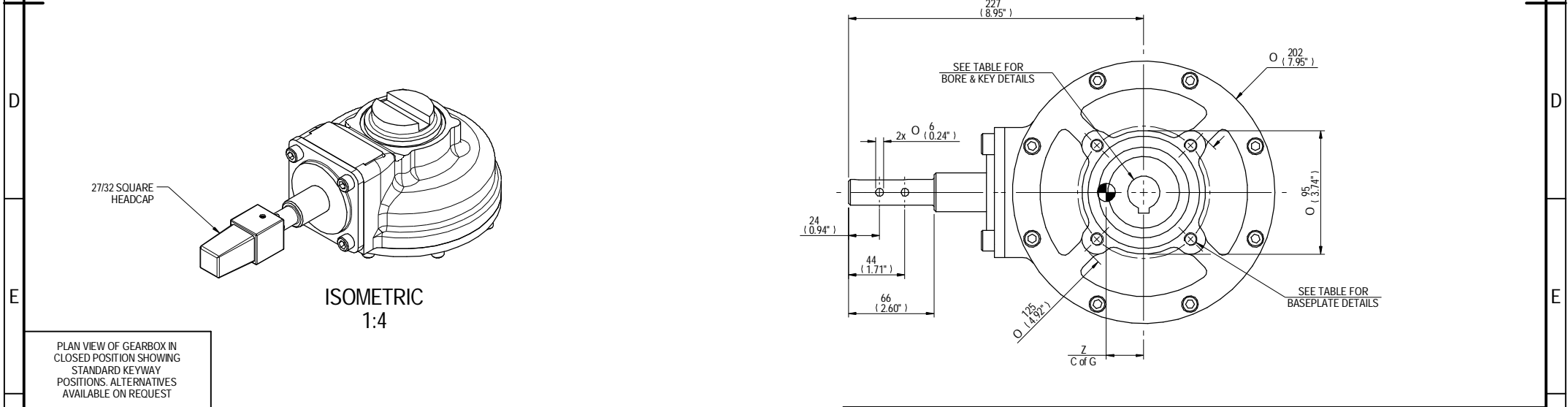
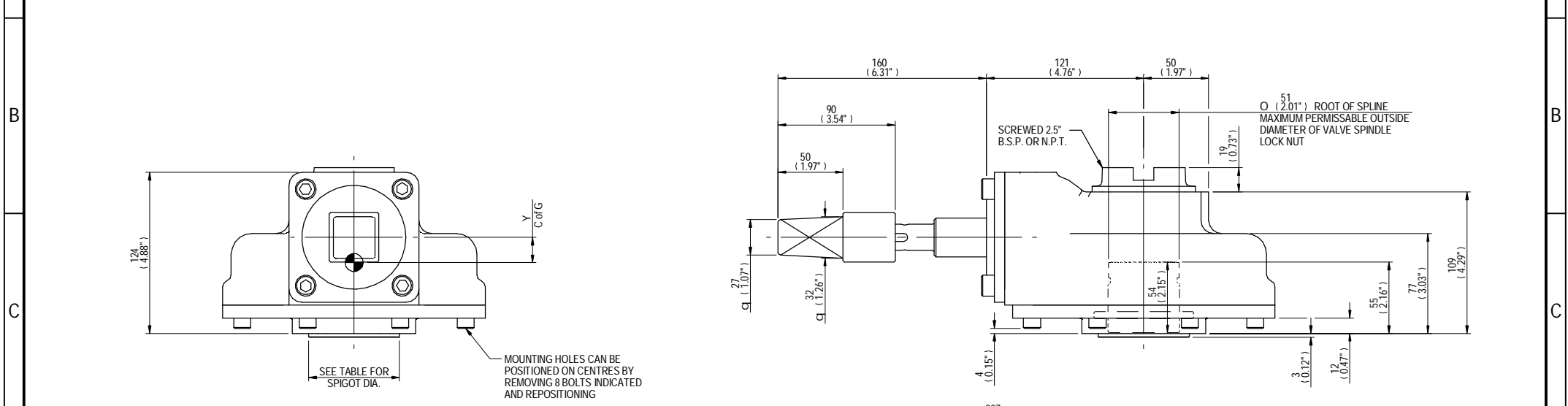


1		2 INPUT FLANGE DETAILS				3		4 MOUNTING HOLES - BOLT CIRCLE (OFF CENTRES)			5		6 STEM ACCEPTANCE IN ACCORDANCE TO STANDARD					8	
INPUT FLANGE	FLANGE O/DIA. + THICKNESS	SHAFT DIA.	RECESS DIA.	RECESS DEPTH	HOLE DETAILS (OFF CENTRES)	KEY DETAILS	ISO 5211 / MSS SP-101 MOUNTING OPTION	HOLE DETAILS (45° OFF CENTRES)		SPIGOT DIAMETER	MAX SCREW STEM ACCEPTANCE	STANDARD	MIN BORE	SQ KEY MAX BORE	SQ KEY SIZE	RECT. KEY MAX BORE	RECT. KEY SIZE	SO BORE MAX	
-	-	19.98-0.05 (0.787"-0.002")	-	-	-	6x6x40 (0.24"x0.24"x1.57")	F10	4xM10x15 (0.59") DEEP ON Ø102 (Ø4.02") P.C.		Ø69.95-0.05 (Ø2.754"-0.002")	45 (1.750")	BS4235	-	-	-	40.0	12 x 8	□ 31.6 (1.244")	
							FA10	4x3/8"UNCx15 (0.59") DEEP ON Ø101.6 (Ø4.00") P.C.		Ø58.70-0.10 (Ø2.311"-0.004")		BS46	-	1.500"	3/8" SQ.	1.625"	7/16" x 5/16"		
												ANSI B17.1	-	1.500"	3/8" SQ.	1.625"	3/8" x 1/4"		
												DIN 6885	-	-	-	-	-		



RATIO	M.A.	WEIGHT	MAX OUTPUT	MAX INPUT	X	Y	Z
6:1	5.1	15.37 kg	680	133	0	19	26
4:1	3.4	15.05 kg	850	250	0	19	28
2:1	1.7	14.44 kg	380	223	0	18	29
DESCRIPTION	TORQUE		CENTRE OF GRAVITY				

AS PART OF CONTINUOUS PRODUCT DEVELOPMENT, ALL DETAILS SUBJECT TO CHANGE WITHOUT PRIOR NOTICE. FOR UP TO DATE DETAILS PLEASE VISIT www.rotork.com

rotork Gears
LEEDS - UK
www.rotork.com

This drawing is confidential and is the property of Rotork Gears and must not be reproduced either wholly or partly. All rights in respect of patents, designs and copyrights are reserved. © 2016

Document Type	PUBLICITY	Mass	15.37 kg	Title	HOB4 GEARBOX MANUAL INPUT WITH 27/32 HEADCAP F10/FA10 OUTPUT
		Dimensions in mm		Scale 1:3	
Created	J PRIESTLEY	24/05/2016	Drawing Number PUB-HOB4-HEADCAP-F10 Iss. 01		
Checked	C FLESHER	24/05/2016	Sheet 1 of 1 Size A3		
Approved	-	-			