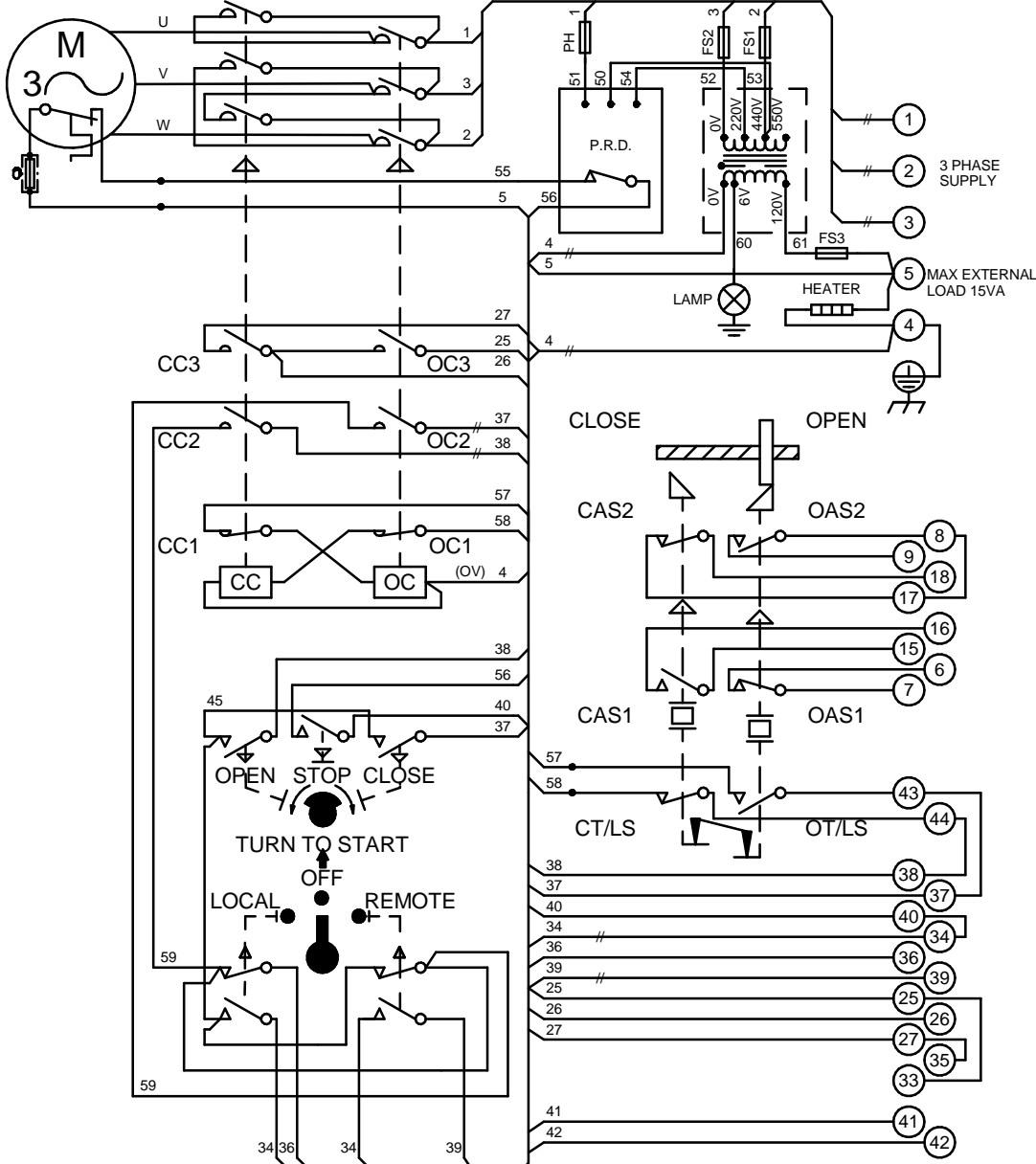


CIRCUIT IS DRAWN FOR A VALVE IN THE FULLY OPEN POSITION

FOR MODEL No.98A99- P.R.D.s (BLACK CASE) WIRE 54 CONNECTS TO OV.



WARNING

DO NOT RUN ACTUATOR TO LIMITS WITH INCORRECT PHASE ROTATION

- O - OPEN
- C - CLOSE
- OC - OPEN CONTACTOR
- CC - CLOSE CONTACTOR
- OC1 & CC1 - CONTACTOR INTERLOCK
- OC2 & CC2 - CONTACTOR MAINTAINING CONTACT
- OC3 & CC3 - CONTACTOR AUXILIARY CONTACT

- T/L.S - TORQUE/LIMITSWITCH
- AS1 - AUXILIARY LIMIT SWITCH MAKE CONTACT AT END OF TRAVEL
- AS2 - AUXILIARY LIMIT SWITCH BREAK CONTACT AT END OF TRAVEL

LINK SUPPLIED BY ROTORK

- R - RELAY
- R1 & R2 - RELAY CONTACTS
- M - MONITOR

FOR TYPICAL REMOTE CONTROL INDICATING, MONITORING AND ALARM CIRCUITS SEE PUBLICATION AE4.0

FUSES FS1,2,3 & PH 500 mA

WIRES ARE IDENTIFIED AT EACH END BY TERMINAL No. OR BY WIRE No. SHOWN

// INDICATES TWO WIRES TERMINATED

IAS1/2/3 - ADJUSTABLE TO OPERATE TOGETHER AT ANY POSITION (DRAWN AS FOR EXTRA OPEN AUXILIARY)

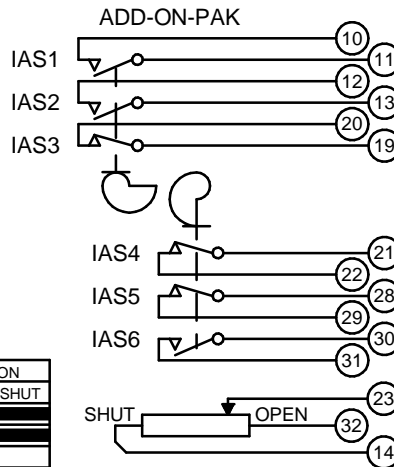
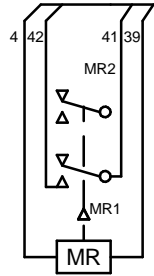
IAS4/5/6 - ADJUSTABLE TO OPERATE TOGETHER AT ANY POSITION (DRAWN AS FOR EXTRA CLOSE AUXILIARY)

IAS 1 TO 6 INTERMEDIATE AUXILIARY SWITCHES. CONTACT FUNCTIONS MAY BE REVERSED BY SETTING CAM TO RELEASE INSTEAD OF DEPRESS SWITCH AS ILLUSTRATED

C.S.A. NOTE.

FOR C.S.A. ONLY FUSES FS1 & FS2 ARE NOT FITTED. POTENTIOMETER SUPPLY TO BE FUSED. (1 AMP MAXIMUM)

THERMAL FUSE. ATEX APPROVED UNITS ONLY.



TORQUE AND LIMIT SWITCH OPERATION				ADD ON PAK 1 SWITCH OPERATION			
SWITCH	OPEN	INTER	SHUT	SWITCH	OPEN	INTER	SHUT
OT/LS				IAS1			
CT/LS				IAS2			
CAS1				IAS3			
CAS2				IAS4			
OAS1				IAS5			
OAS2				IAS6			

INDICATES SWITCH MADE

Iss	Date	Chkd	Revision Details
3	170616	AS	Atex Fuse added + converted to SE format.

www.rotork.com

ROTORK CONTROLS LTD
BATH, BA1 3JQ
ENGLAND
Tel:01225-733200

ROTORK CONTROLS INC
ROCHESTER
NY 14624, USA
Tel:585-247-2304

1400 SYNCROPAK ANTICLOCK WITH PRD + AOP1 & MON RELAY.

Drawn by: KS
Date : 161285
Base WD: --
Job No : --
MI No : --

Circuit Diagram No
1411-51A
Issue No
3