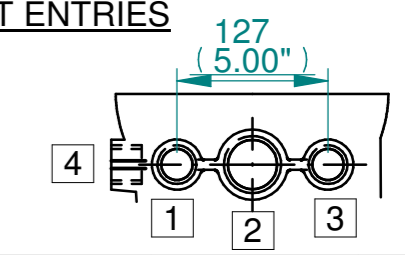


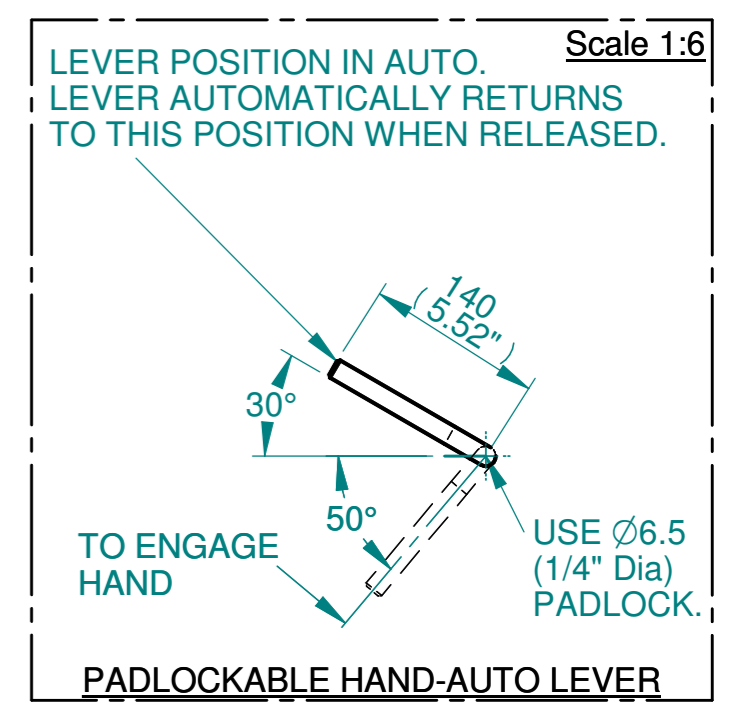
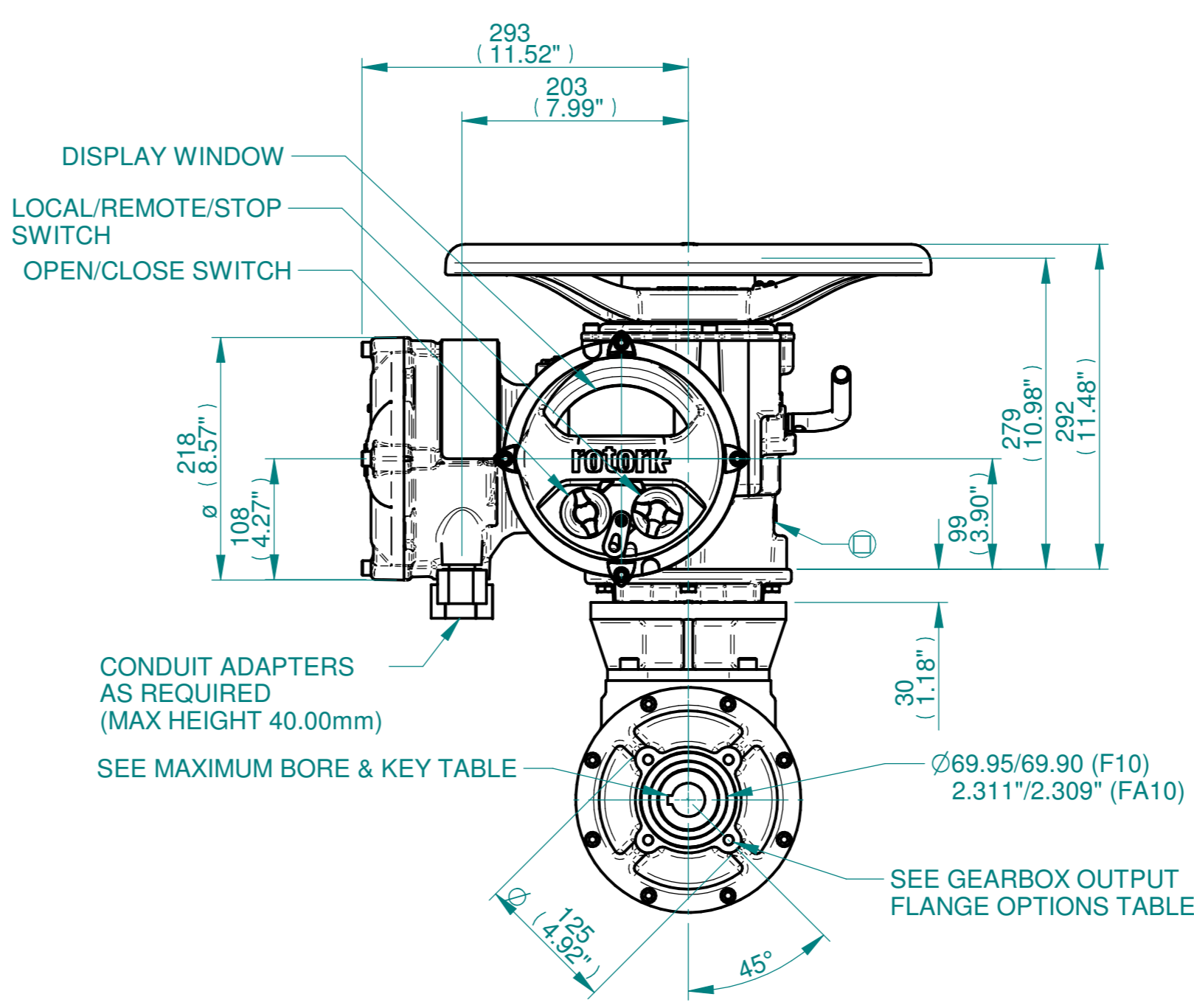
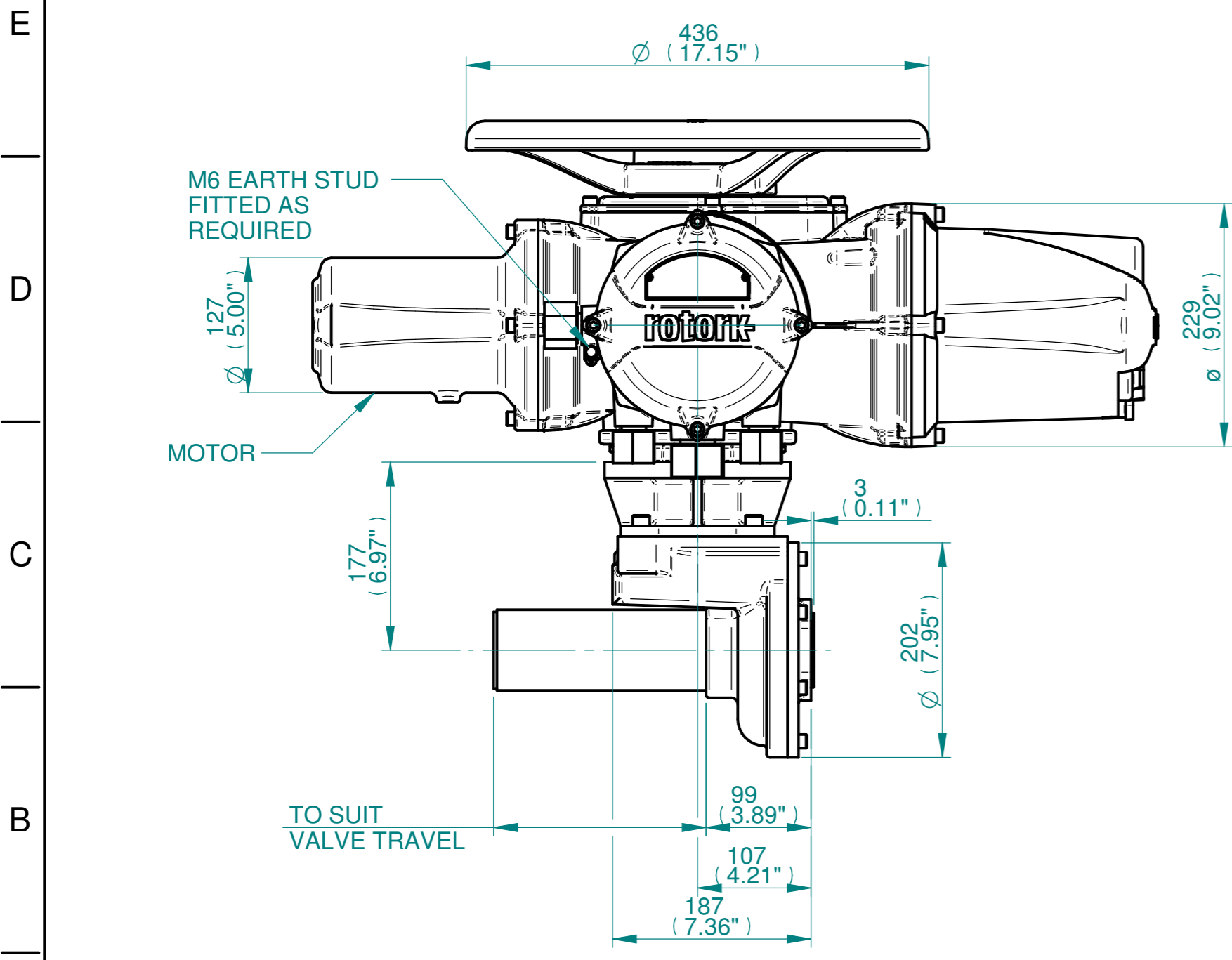
ISOMETRIC VIEW
(SCALE 1:12)

NOTES:
 :DIMENSIONS WITH "*" INDICATE COVER REMOVAL ALLOWANCE
 :ELECTRONICS COVER OPTION "****" WILL VARY DEPENDING ON CONFIGURATION
 :NETT WEIGHT = 75kg/165lbs
 : = OIL FILLER/DRAIN PLUG
 :THE INTERFACE PROVIDED FOR MOUNTING THE ACTUATOR OR SECOND STAGE GEARBOX ONTO THE VALVE SHOULD CONFORM TO GOOD ENGINEERING PRACTICES, ENSURING ADEQUATELY TOLERANCED LIMITS FOR PARALLELISM, PERPENDICULARITY AND CONCENTRICITY.
 :ROTORK CANNOT BE HELD LIABLE FOR DAMAGE TO OUR EQUIPMENT CAUSED BY EXCESSIVE LOADING FROM COVER TUBES. (SEE ALSO PUB000-124)

CONDUIT ENTRIES



	Hole 1	Hole 2	Hole 3	Hole 4
Size	As Required	As Required	As Required	As Required
Plugged	As Required	As Required	As Required	As Required
Gland	As Required	As Required	As Required	As Required



 www.rotork.com Rotork Controls Limited Bath, BA1 3JQ, England. Telephone 01225-733200	Actuator Size: IQ20/25, IB2, F10/FA10		Gearbox output flange options								Maximum Bore & Key			
	Title IQ20/25, TOP HANDWHEEL, IB2, F10/FA10, Ratio 1:1 Installation Details		Designation	F10	-	-	-	FA10	-	-	-	Key form	Ø Bore	Key size
	Drawn JLF	Checked NJC	Date 12-MAR-15	No. Holes	4	-	-	4	-	-	-	Rectangle (BS4235)	40	12 X 8
	Ref SALES	Project Ref QUOTATION		Hole size	M10	-	-	3/8" UNC	-	-	-	Rectangle (ANSI B17.1)	1-5/8"	3/8 X 1/4"
			PCD	102	-	-	4"	-	-	-	Square (ANSI B17.1)	1-1/2"	3/8"	

Issue	Description
3	F14 Base change
Scale: 1:5	
THIRD ANGLE PROJECTION	
A2	Drawing Number Issue No Sheet No
I12THWIB2STD	3 1 of 1