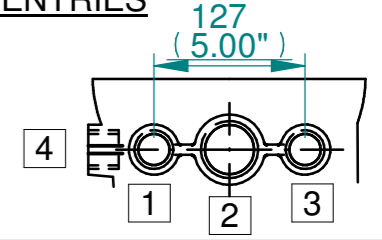


ISOMETRIC VIEW (SCALE 1:12)

NOTES:
 :DIMENSIONS WITH "*" INDICATE COVER REMOVAL ALLOWANCE
 :ELECTRONICS COVER OPTION "****" WILL VARY DEPENDING ON CONFIGURATION
 :NETT WEIGHT = F35:275kg/606lbs, F40:290kg/639lbs
 : = OIL FILLER/DRAIN PLUG
 :THE INTERFACE PROVIDED FOR MOUNTING THE ACTUATOR OR SECOND STAGE GEARBOX ONTO THE VALVE SHOULD CONFORM TO GOOD ENGINEERING PRACTICES, ENSURING ADEQUATELY TOLERANCED LIMITS FOR PARALLELISM, PERPENDICULARITY AND CONCENTRICITY.
 :ROTORK CANNOT BE HELD LIABLE FOR DAMAGE TO OUR EQUIPMENT CAUSED BY EXCESSIVE LOADING FROM COVER TUBES. (SEE ALSO PUB000-124)

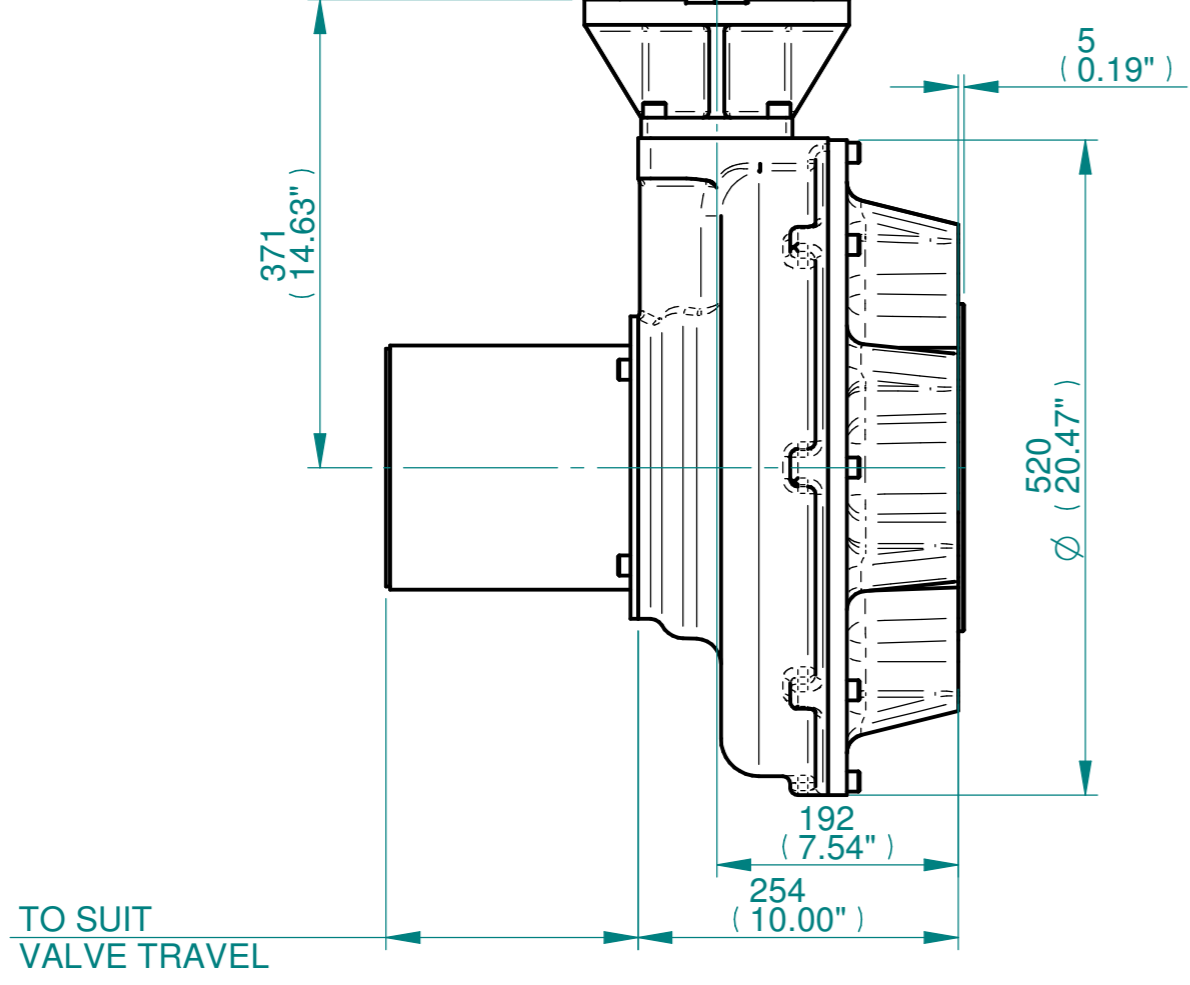
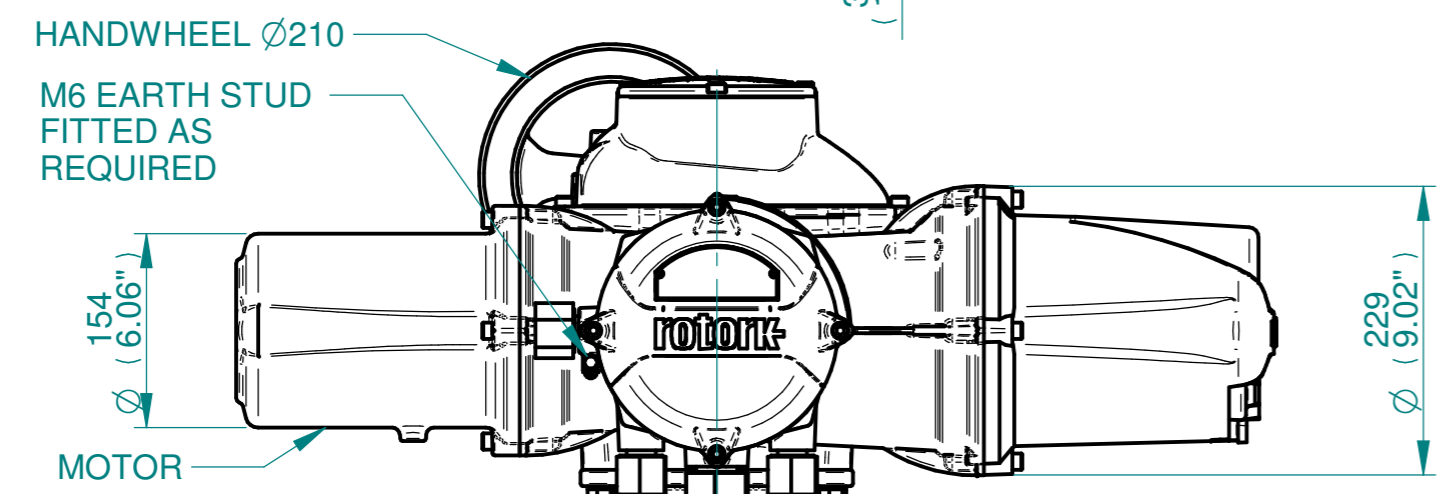
CONDUIT ENTRIES



	Hole 1	Hole 2	Hole 3	Hole 4
Size	As Required	As Required	As Required	As Required
Plugged	As Required	As Required	As Required	As Required
Gland	As Required	As Required	As Required	As Required

BATTERY HOUSING
 TERMINAL HOUSING
 IDENTIFICATION PLATE

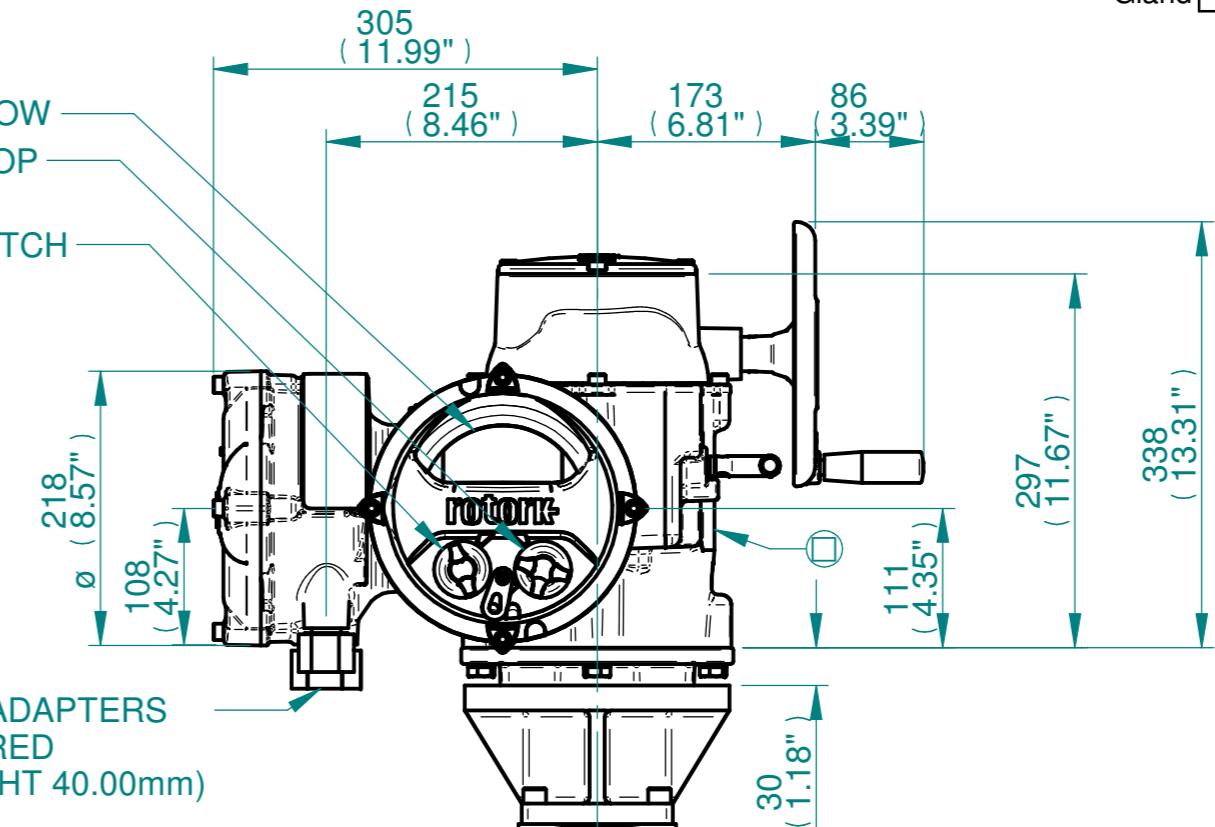
ELECTRONICS COVER (LONG) **
 ELECTRONICS COVER (SHORT) **



DISPLAY WINDOW
 LOCAL/REMOTE/STOP SWITCH
 OPEN/CLOSE SWITCH

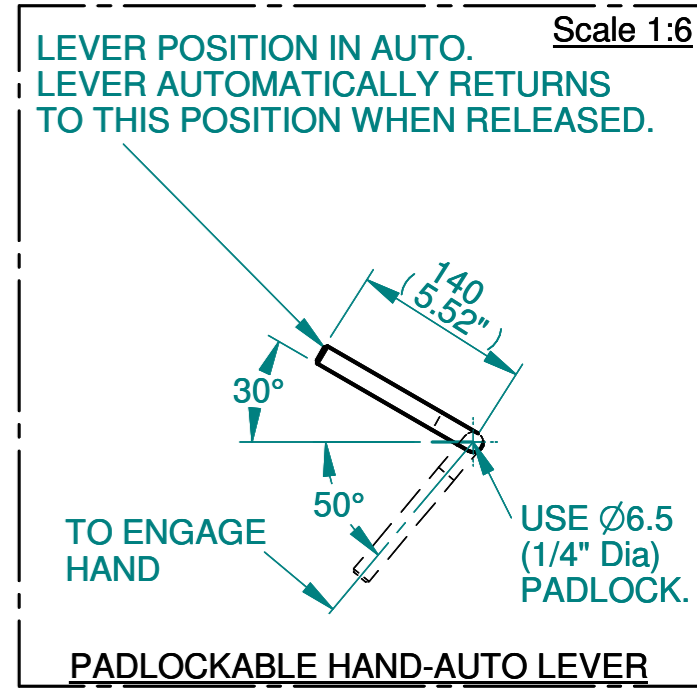
CONDUIT ADAPTERS AS REQUIRED (MAX HEIGHT 40.00mm)

SEE MAXIMUM BORE & KEY TABLE



Ø259.95/259.90 (F35)
 8.496"/8.488" (FA35)
 299.95/299.90 (F40)
 9.000"/8.994" (FA40)

SEE GEARBOX OUTPUT FLANGE OPTIONS TABLE



www.rotork.com
 Rotork Controls Limited
 Bath, BA1 3JQ, England.
 Telephone 01225-733200

Actuator Size: IQ35, IB13, F35/F40/FA35/FA40		Gearbox output flange options								Maximum Bore & Key		
Title IQ35, SIDE HANDWHEEL, IB13, F35/F40/FA35/FA40, Ratios 6:1 & 8:1, Installation Details Drawn JLF Checked NJC Date 13-MAR-15 Ref SALES Project Ref QUOTATION	Designation	F35	F40	-	-	FA35	FA40	-	-	Key form	Ø Bore	Key size
	No. Holes	8	8	-	-	8	8	-	-	Rectangle (BS4235)	121	32 X 18
	Hole size	M30	M36	-	-	1" UNC	1-1/4" UNC	-	-	Rectangle (ANSI B17.1)	4-5/8"	1-1/4 X 7/8"
	PCD	356	406	-	-	14"	16"	-	-	Square (ANSI B17.1)	4-1/2"	1-1/4"

Issue	Description
2	4 ENTRY CHANGE

Scale: 1:5 THIRD ANGLE PROJECTION

Drawing Number	Issue No	Sheet No
I13SHWIB13STD	2	1 of 1