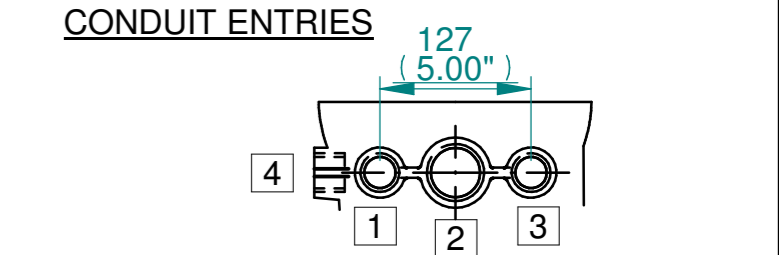


ISOMETRIC VIEW
(SCALE 1:12)

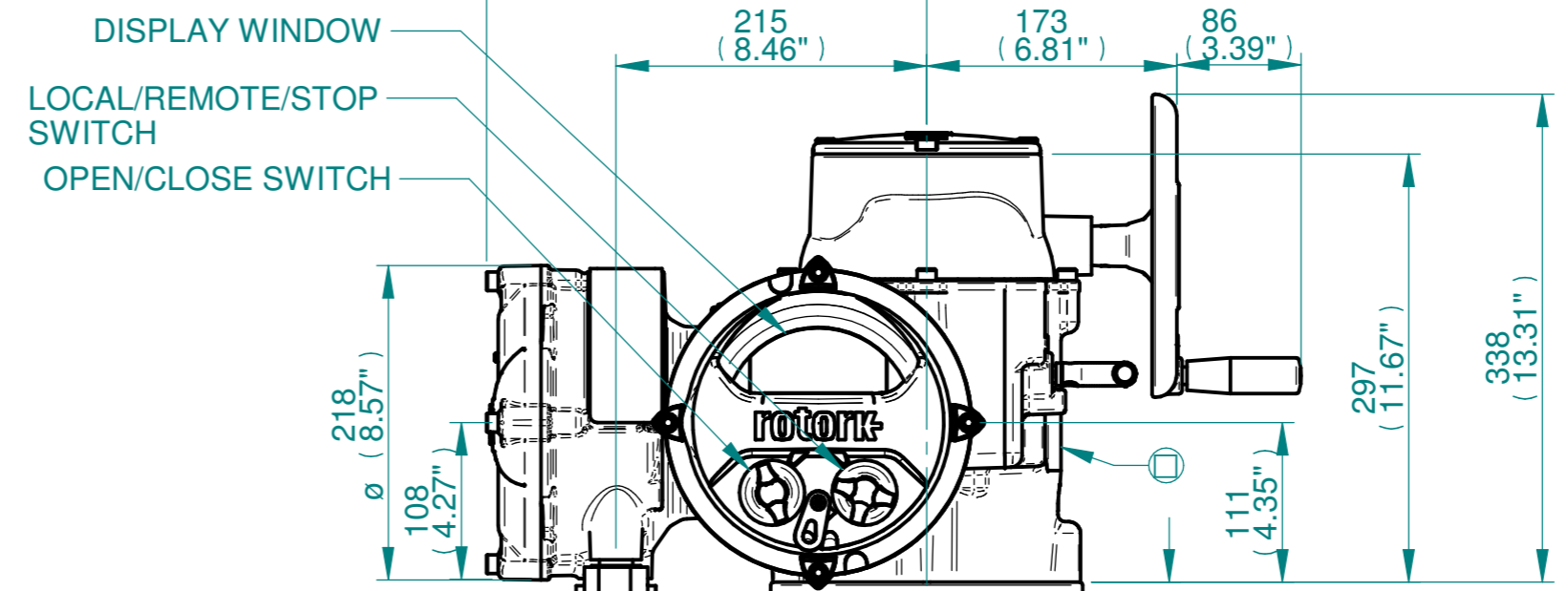
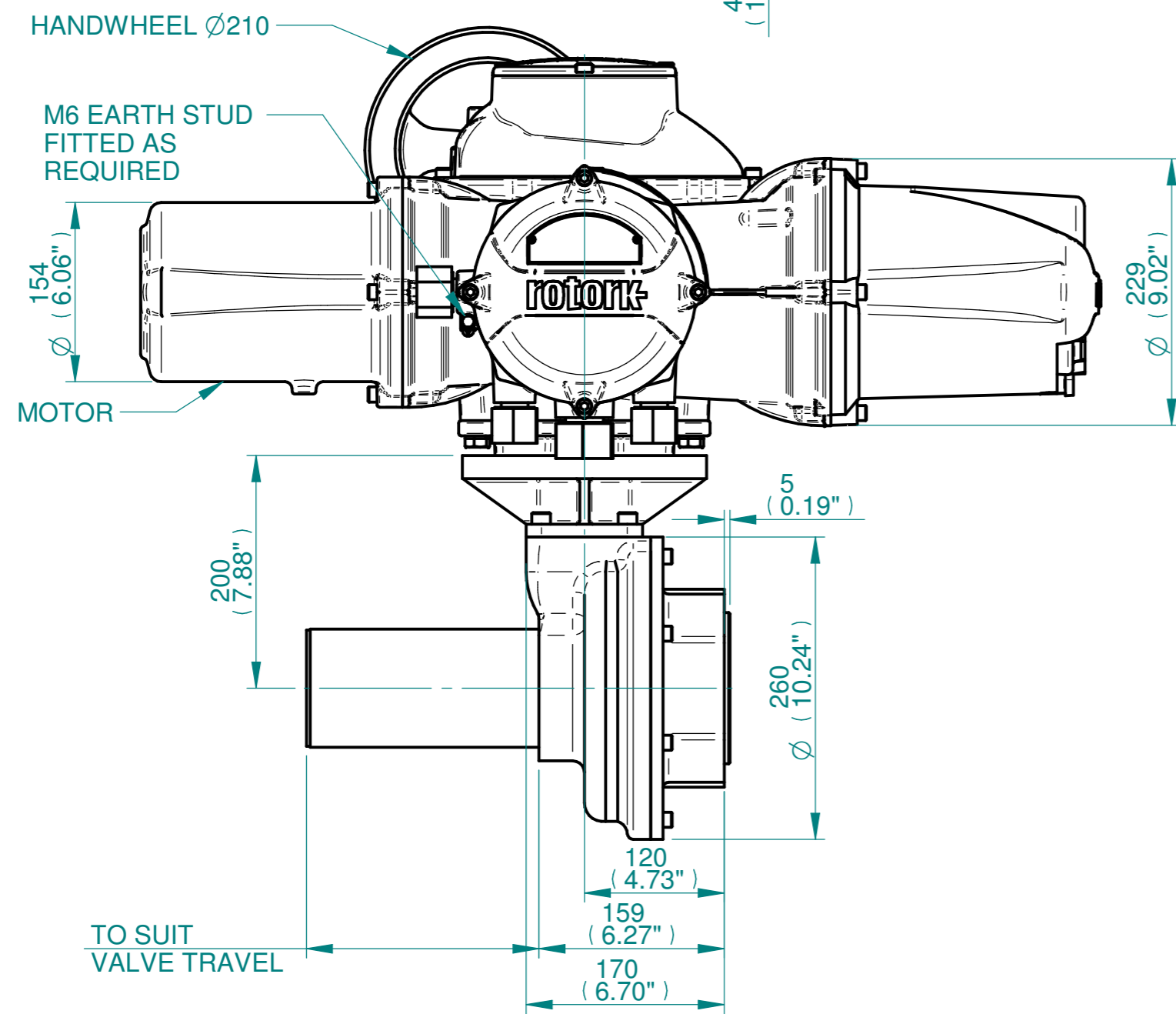
NOTES:
 :DIMENSIONS WITH "*" INDICATE COVER REMOVAL ALLOWANCE
 :ELECTRONICS COVER OPTION "****" WILL VARY DEPENDING ON CONFIGURATION
 :NETT WEIGHT = F16:110kg/242lbs, F25:120kg/264lbs
 : = OIL FILLER/DRAIN PLUG

:THE INTERFACE PROVIDED FOR MOUNTING THE ACTUATOR OR SECOND STAGE GEARBOX ONTO THE VALVE SHOULD CONFORM TO GOOD ENGINEERING PRACTICES, ENSURING ADEQUATELY TOLERANCED LIMITS FOR PARALLELISM, PERPENDICULARITY AND CONCENTRICITY.
 :ROTORK CANNOT BE HELD LIABLE FOR DAMAGE TO OUR EQUIPMENT CAUSED BY EXCESSIVE LOADING FROM COVER TUBES. (SEE ALSO PUB000-124)



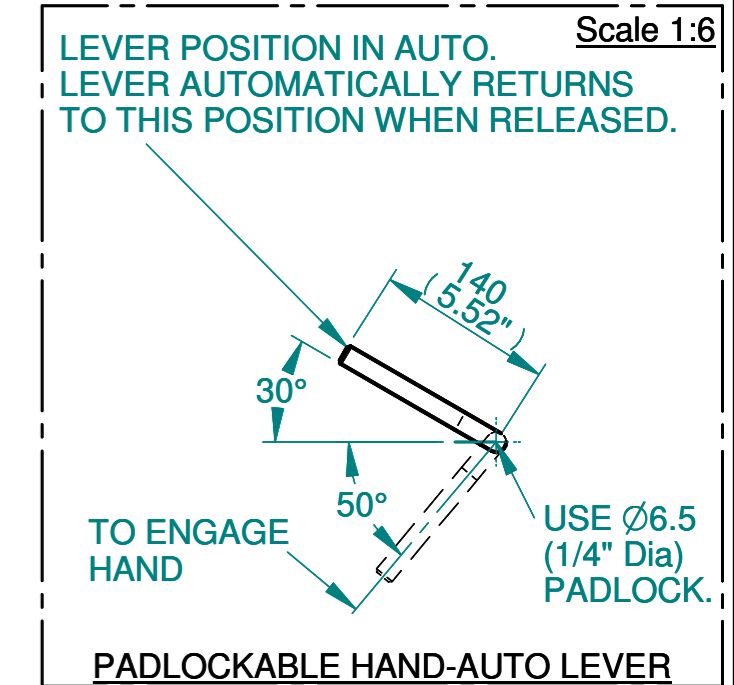
	Hole 1	Hole 2	Hole 3	Hole 4
Size	As Required	As Required	As Required	As Required
Plugged	As Required	As Required	As Required	As Required
Gland	As Required	As Required	As Required	As Required

BATTERY HOUSING
 TERMINAL HOUSING
 IDENTIFICATION PLATE
 ELECTRONICS COVER (LONG) **
 ELECTRONICS COVER (SHORT) **



DISPLAY WINDOW
 LOCAL/REMOTE/STOP SWITCH
 OPEN/CLOSE SWITCH
 CONDUIT ADAPTERS AS REQUIRED (MAX HEIGHT 40.00mm)
 SEE MAXIMUM BORE & KEY TABLE
 SEE GEARBOX OUTPUT FLANGE OPTIONS TABLE

Ø129.90/129.95 (F16)
 4.995"/4.985" (FA16)
 199.95/199.90 (F25)
 5.998"/6.000" (FA25)



Actuator Size: IQ35, IB7, F16/F25/FA16/FA25		Gearbox output flange options								Maximum Bore & Key		
Title IQ35, SIDE HANDWHEEL, IB7 F14/FA14/F16/FA16 Ratios 3:1, 4:1 & 6:1 Installation Details Drawn TCE Checked NJC Date 13-MAR-15 Ref SALES Project Ref QUOTATION	Designation	F16	F25	-	-	FA16	FA25	-	-	Key form	Ø Bore	Key size
	No. Holes	4	8	-	-	4	8	-	-	Rectangle (BS4235)	68	20 X 12
	Hole size	M20	M16	-	-	3/4" UNC	5/8" UNC	-	-	Rectangle (ANSI B17.1)	2-5/8"	5/8 X 7/16"
	PCD	165	254	-	-	6.5"	10"	-	-	Square (ANSI B17.1)	2-1/2"	5/8"

Issue	Description
3	Gearbox ratios changed

Scale: 1:5 THIRD ANGLE PROJECTION

Drawing Number	Issue No	Sheet No
I13SHWIB7STD	3	1 of 1