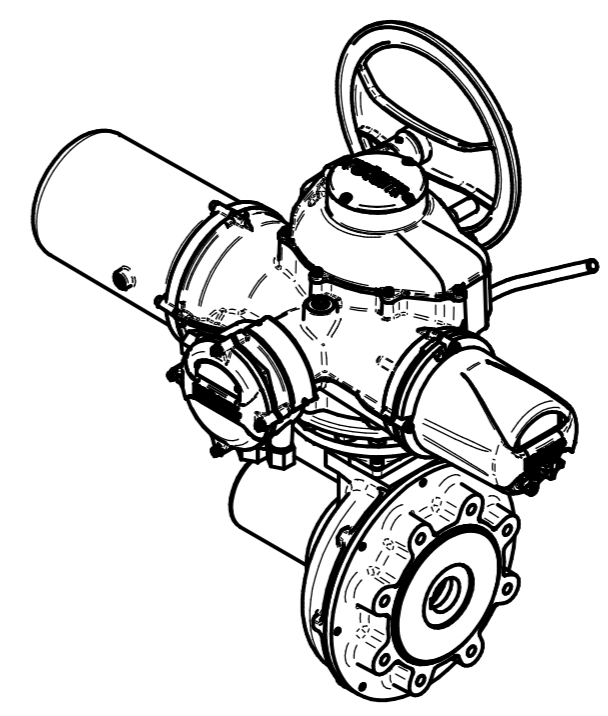
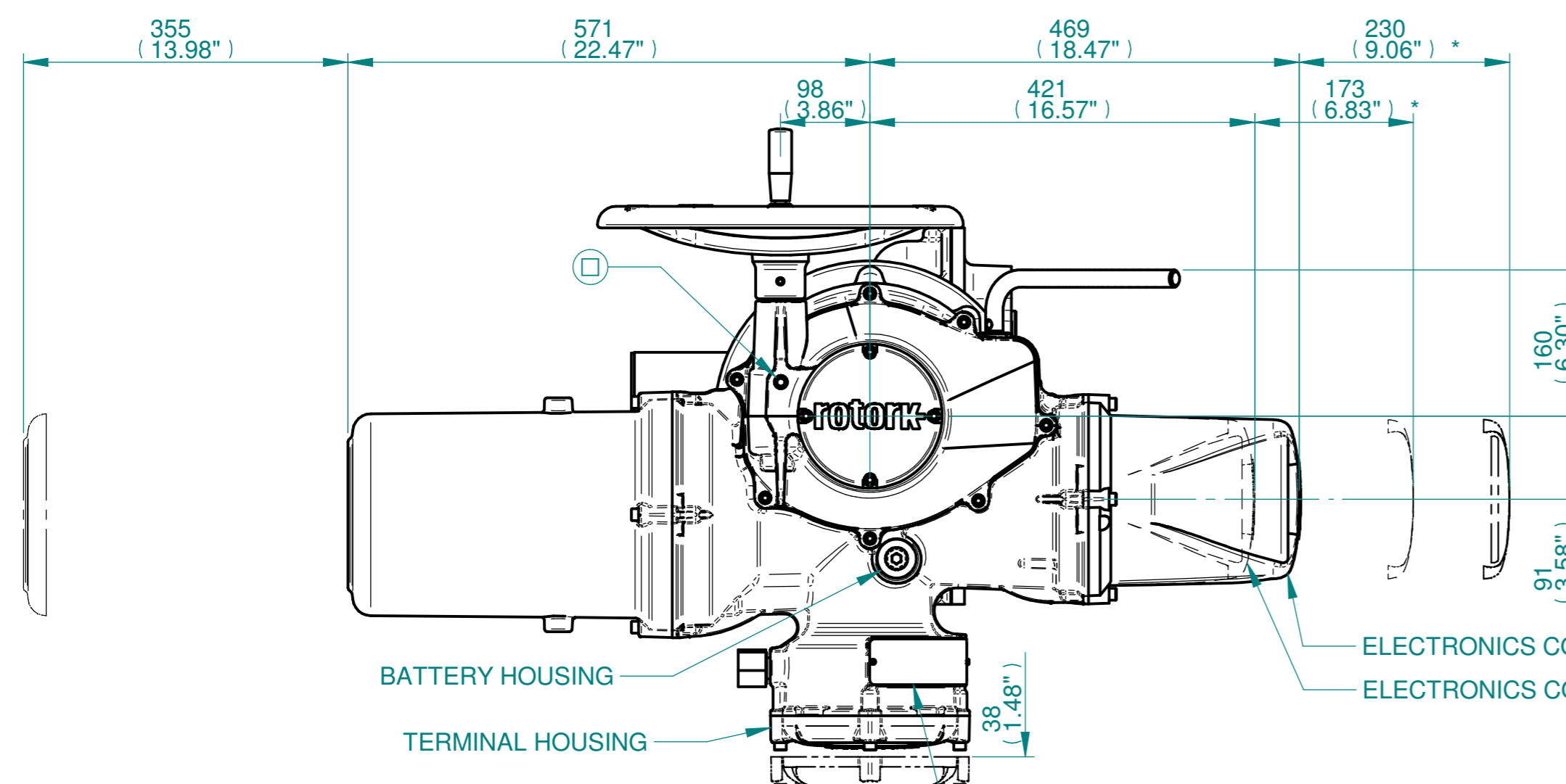


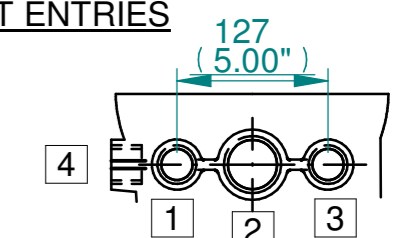
H  
G  
F  
E  
D  
C  
B  
A



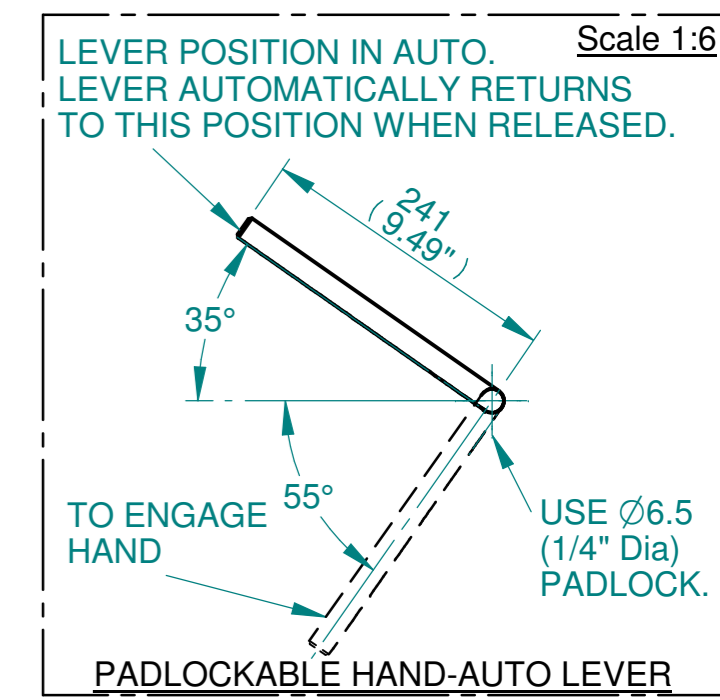
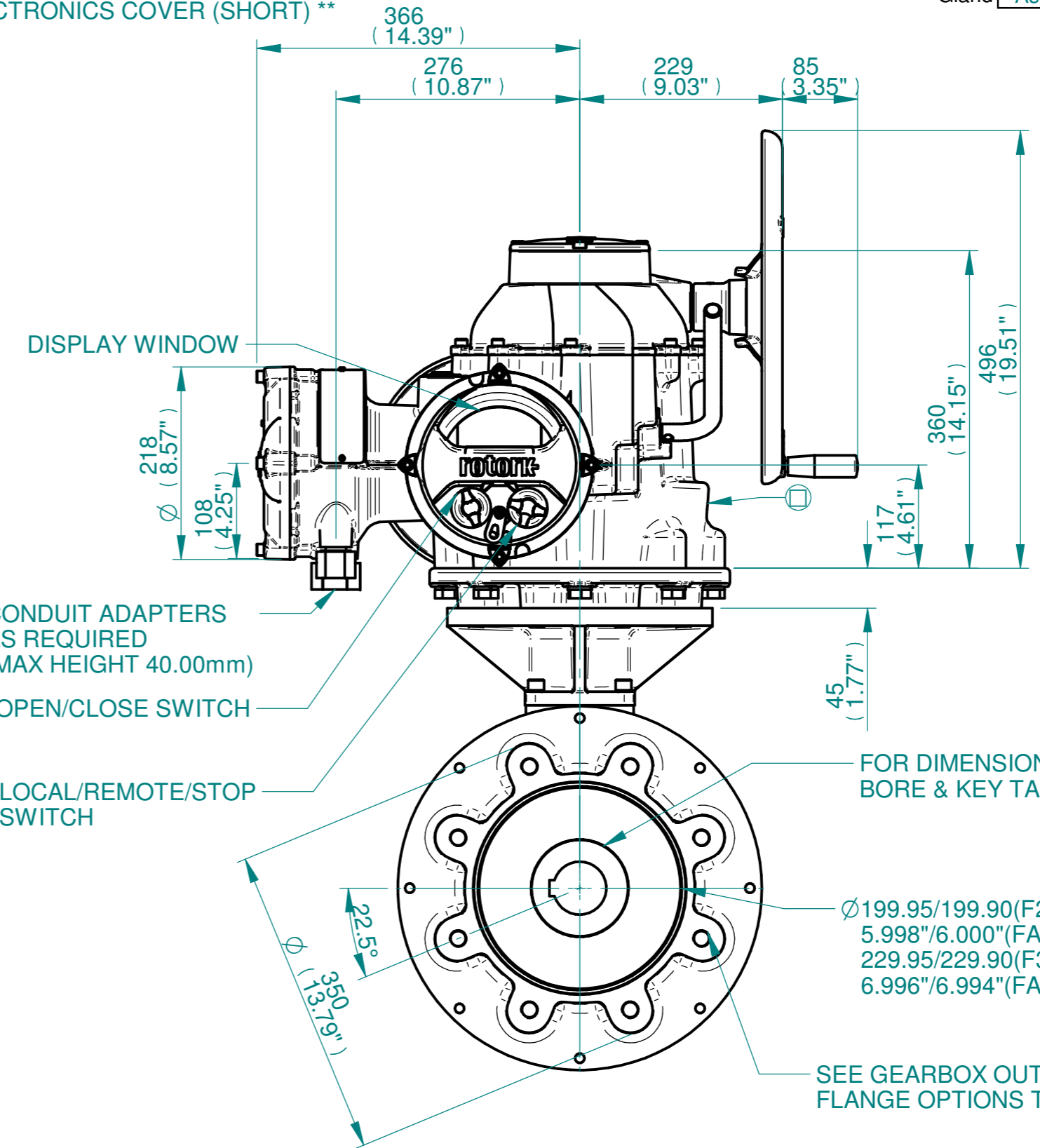
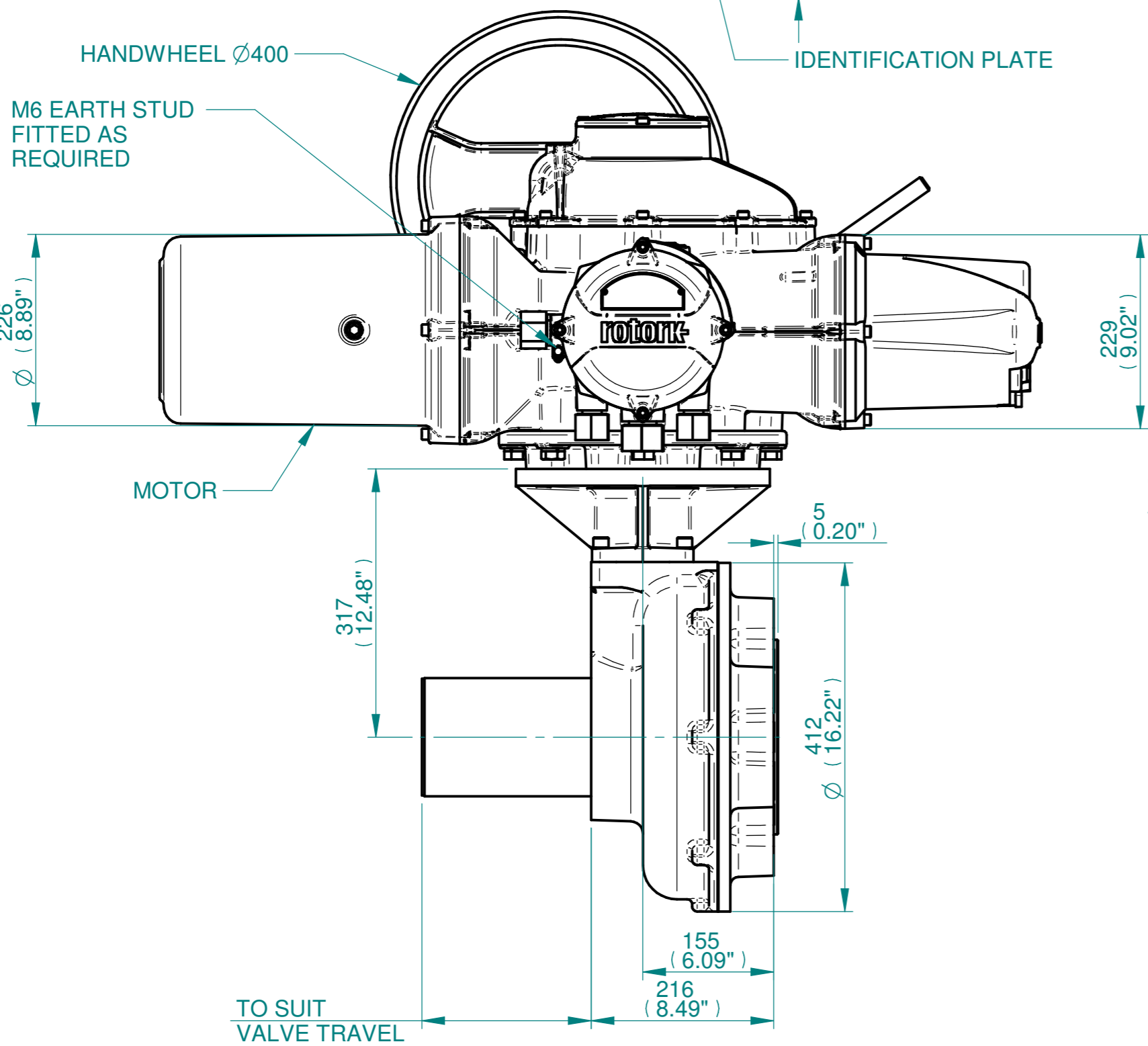
ISOMETRIC VIEW (SCALE 1:12)

**NOTES:**  
 :DIMENSIONS WITH "\*" INDICATE COVER REMOVAL ALLOWANCE  
 :ELECTRONICS COVER OPTION "\*\*\*\*" WILL VARY DEPENDING ON CONFIGURATION  
 :NETT WEIGHT = F25:255kg/562lbs, F30:259kg/571lbs  
 : = OIL FILLER/DRAIN PLUG  
 :THE INTERFACE PROVIDED FOR MOUNTING THE ACTUATOR OR SECOND STAGE GEARBOX ONTO THE VALVE SHOULD CONFORM TO GOOD ENGINEERING PRACTICES, ENSURING ADEQUATELY TOLERANCED LIMITS FOR PARALLELISM, PERPENDICULARITY AND CONCENTRICITY.  
 :ROTORK CANNOT BE HELD LIABLE FOR DAMAGE TO OUR EQUIPMENT CAUSED BY EXCESSIVE LOADING FROM COVER TUBES. (SEE ALSO PUB000-124)

**CONDUIT ENTRIES**



	Hole 1	Hole 2	Hole 3	Hole 4
Size	As Required	As Required	As Required	As Required
Plugged	As Required	As Required	As Required	As Required
Gland	As Required	As Required	As Required	As Required



Actuator Size: IQ91, IB10, F25/F30/FA25/FA30		Gearbox output flange options								Maximum Bore & Key		
<b>rotork</b> www.rotork.com Rotork Controls Limited Bath, BA1 3JQ, England. Telephone 01225-733200	Title IQ91, SIDE HANDWHEEL, IB10, F25/F30/FA25/FA30, Ratios 4:1 & 6:1 Installation Details Drawn TCE Checked NJC Date 19-AUG-14 Ref SALES Project Ref QUOTATION	<b>Designation</b> F25 F30 - - FA25 FA30 - -								<b>Key form</b> Rectangle (BS4235)	Ø Bore 76	Key size 22 X 14
		<b>No. Holes</b> 8 8 - - 8 8 - -								<b>Rectangle (ANSI B17.1)</b>	3"	3/4 X 1/2"
		<b>Hole size</b> M16 M20 - - 5/8" UNC 3/4" UNC - -								<b>Rectangle (ANSI B17.1)</b>	3"	3/4 X 1/2"
		<b>PCD</b> 254 298 - - 10" 11.75" - -								<b>Square (ANSI B17.1)</b>	2-3/4"	3/4"

Issue	Description
2	4 ENTRY CHANGE

Scale: 1:5 THIRD ANGLE PROJECTION

Drawing Number	Issue No	Sheet No
I15-91-SHWIB10STD	2	1 of 1

1 2 3 4 5 6 7 8 9 10 11 12