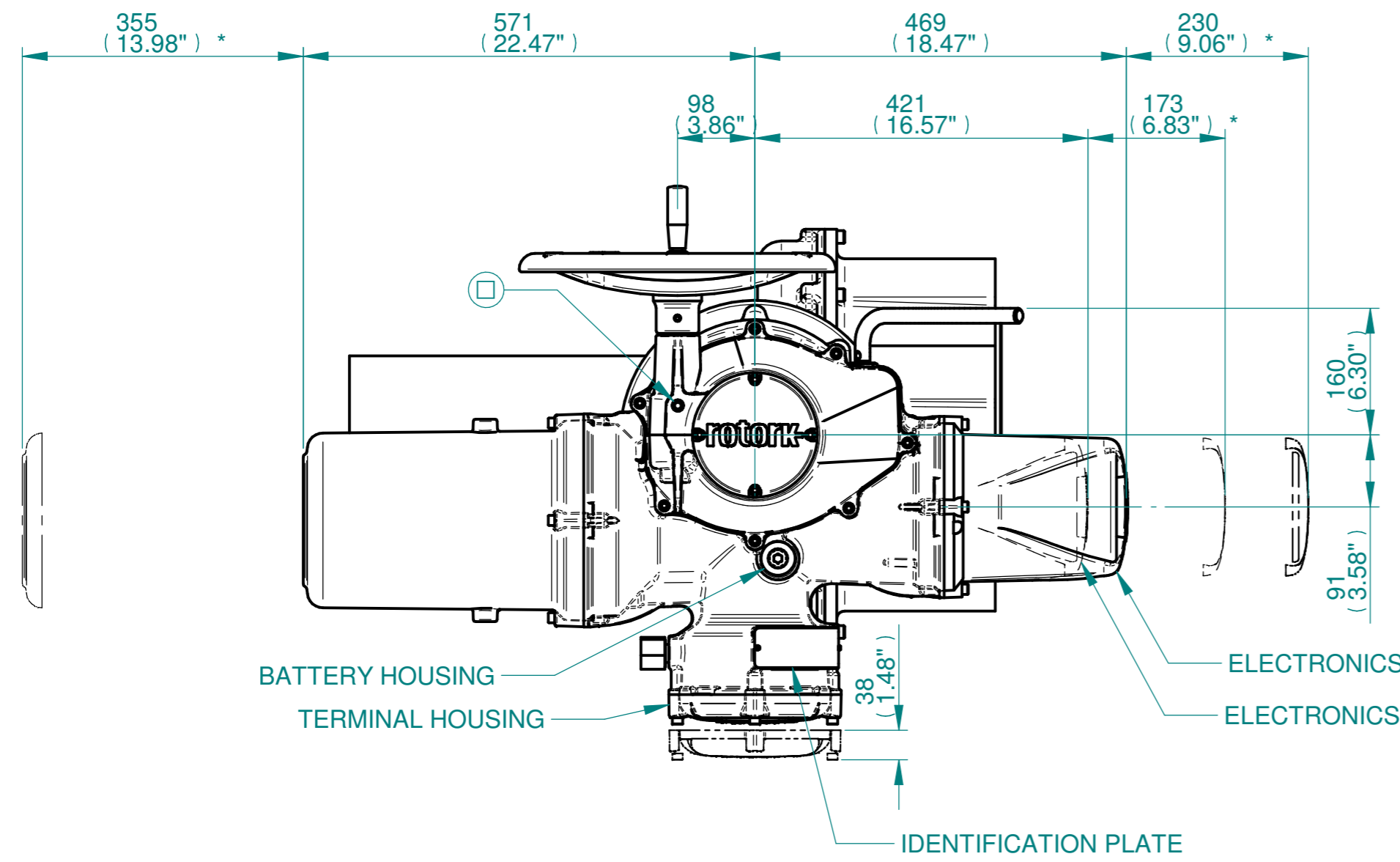


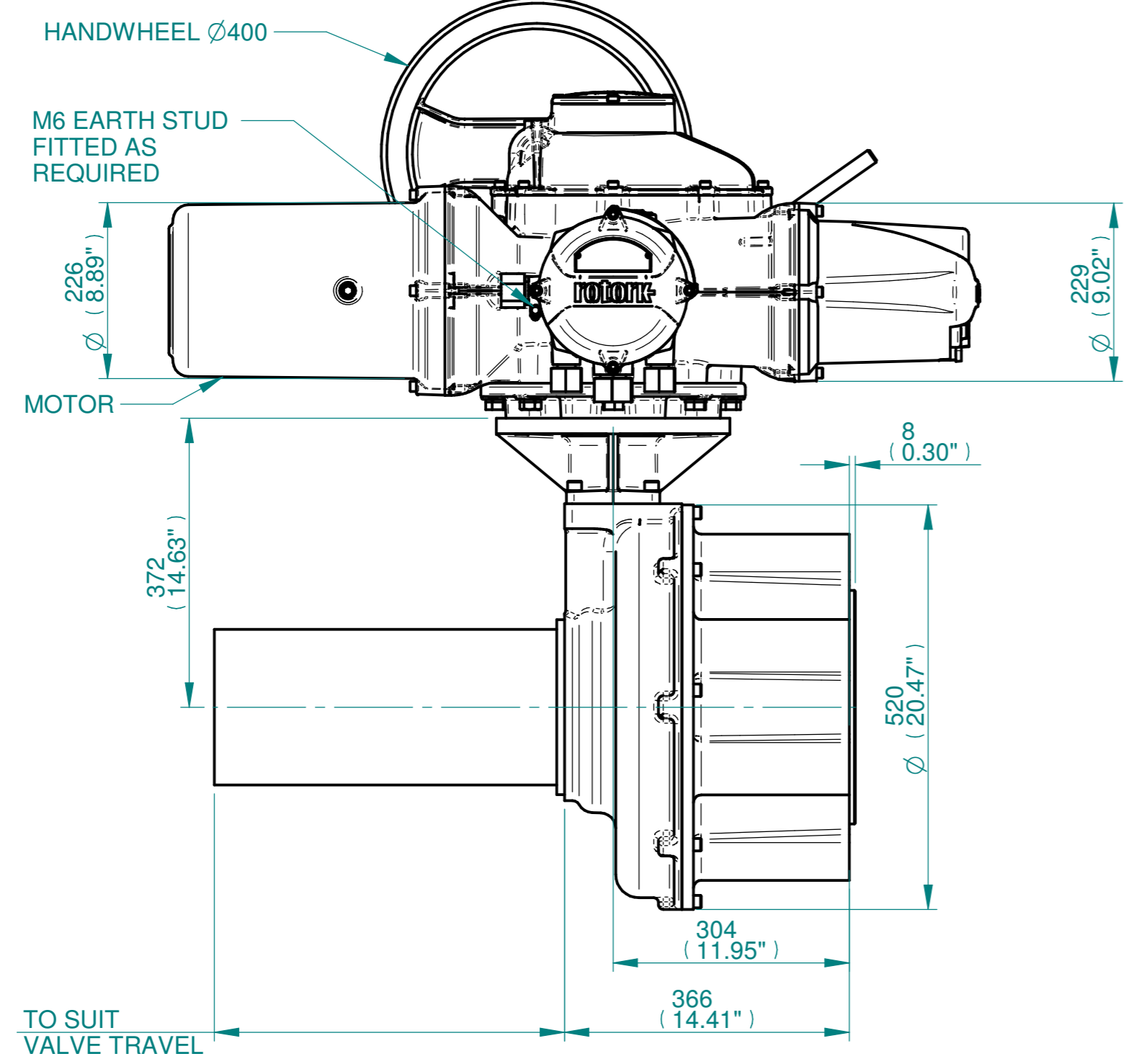
H  
G  
F  
E  
D  
C  
B  
A



BATTERY HOUSING  
TERMINAL HOUSING

ELECTRONICS COVER (LONG) \*\*  
ELECTRONICS COVER (SHORT) \*\*

IDENTIFICATION PLATE

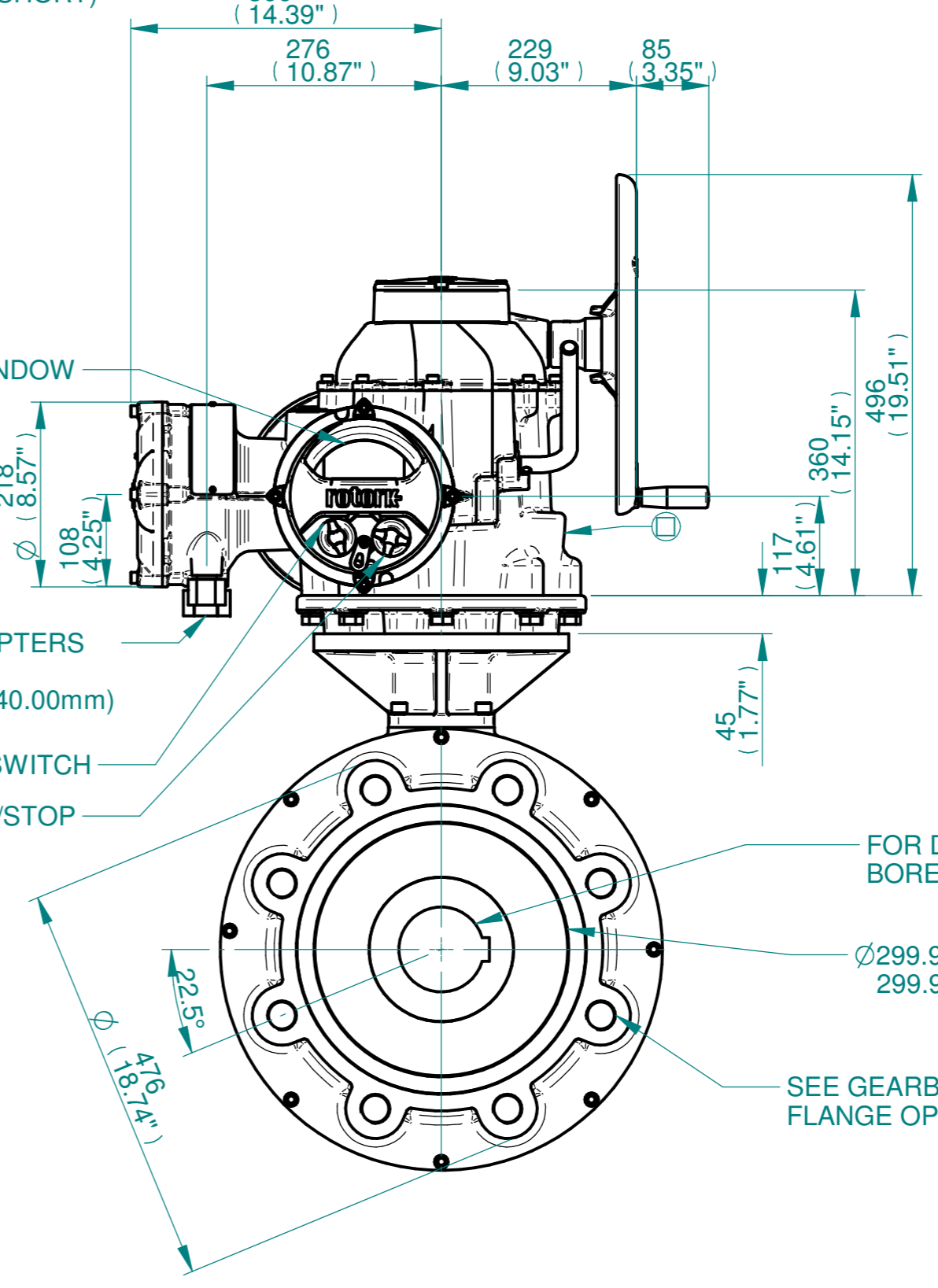


HANDWHEEL Ø400  
M6 EARTH STUD  
FITTED AS  
REQUIRED

MOTOR

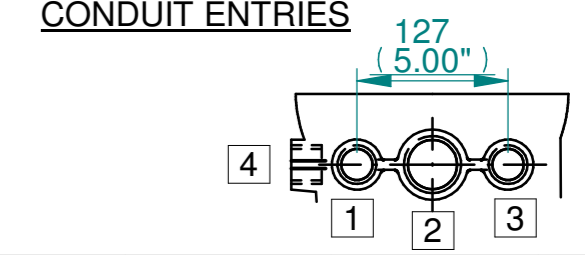
TO SUIT  
VALVE TRAVEL

DISPLAY WINDOW  
CONDUIT ADAPTERS  
AS REQUIRED  
(MAX HEIGHT 40.00mm)  
OPEN/CLOSE SWITCH  
LOCAL/REMOTE/STOP  
SWITCH



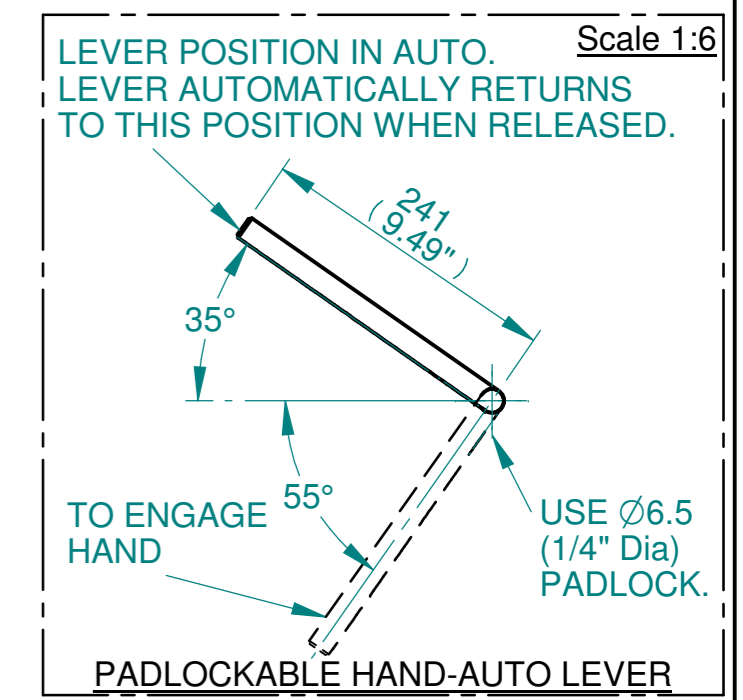
ISOMETRIC VIEW  
(SCALE 1:12)

Size	Hole 1	Hole 2	Hole 3	Hole 4
Plugged	As Required	As Required	As Required	As Required
Gland	As Required	As Required	As Required	As Required



**NOTES:**  
:DIMENSIONS WITH "\*" INDICATE COVER REMOVAL ALLOWANCE  
:ELECTRONICS COVER OPTION "\*\*\*\*" WILL VARY DEPENDING ON CONFIGURATION  
:NETT WEIGHT = 493kg/1087lbs  
: = OIL FILLER/DRAIN PLUG  
:THE INTERFACE PROVIDED FOR MOUNTING THE ACTUATOR OR SECOND STAGE GEARBOX ONTO THE VALVE SHOULD CONFORM TO GOOD ENGINEERING PRACTICES, ENSURING ADEQUATELY TOLERANCED LIMITS FOR PARALLELISM, PERPENDICULARITY AND CONCENTRICITY.  
:ROTORK CANNOT BE HELD LIABLE FOR DAMAGE TO OUR EQUIPMENT CAUSED BY EXCESSIVE LOADING FROM COVER TUBES. (SEE ALSO PUB000-124)

CONDUIT ENTRIES



FOR DIMENSIONS SEE MAXIMUM BORE & KEY TABLE  
Ø299.95/299.90(F40)  
299.95/299.90(FA40)  
SEE GEARBOX OUTPUT FLANGE OPTIONS TABLE



Rotork Controls Limited  
Bath, BA1 3JQ, England.  
Telephone 01225-733200

Actuator Size: IQ91, IB14, F40/FA40		Gearbox output flange options								Maximum Bore & Key				
Title	IQ91, SIDE HANDWHEEL, IB14, F40/FA40 Ratios 6:1 & 8:1 Installation Details	Designation	F40	-	-	-	-	FA40	-	-	-	Key form	Ø Bore	Key size
Drawn	TCE	No. Holes	8	-	-	-	-	8	-	-	-	Rectangle (BS4235)	130	32 X 18
Checked	NJC	Hole size	M36	-	-	-	-	1-1/4" UNC	-	-	-	Rectangle (ANSI B17.1)	5"	1-1/4 X 7/8"
Date	19-AUG-14	PCD	406	-	-	-	-	16"	-	-	-	Square (ANSI B17.1)	4-5/8"	1-1/4"
Ref	SALES	Project Ref	QUOTATION	-	-	-	-	-	-	-	-	-	-	-

Issue	Description
2	4 ENTRY CHANGE
Scale: 1:12	
THIRD ANGLE PROJECTION	
A2	Drawing Number Issue No Sheet No
I15-91-SHWIB14STD	2 1 of 1

1 2 3 4 5 6 7 8 9 10 11 12