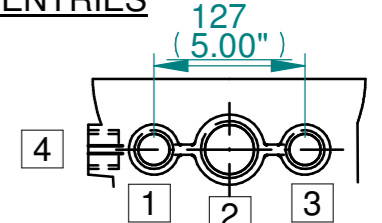


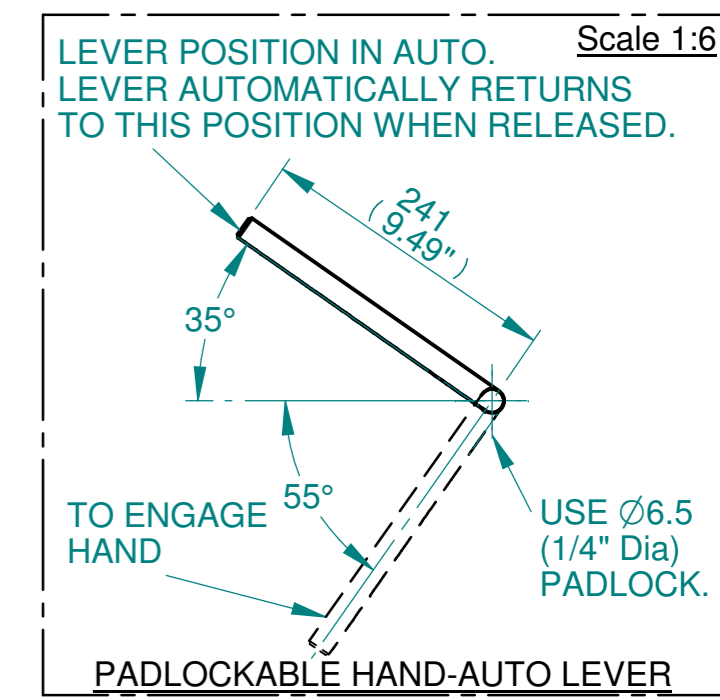
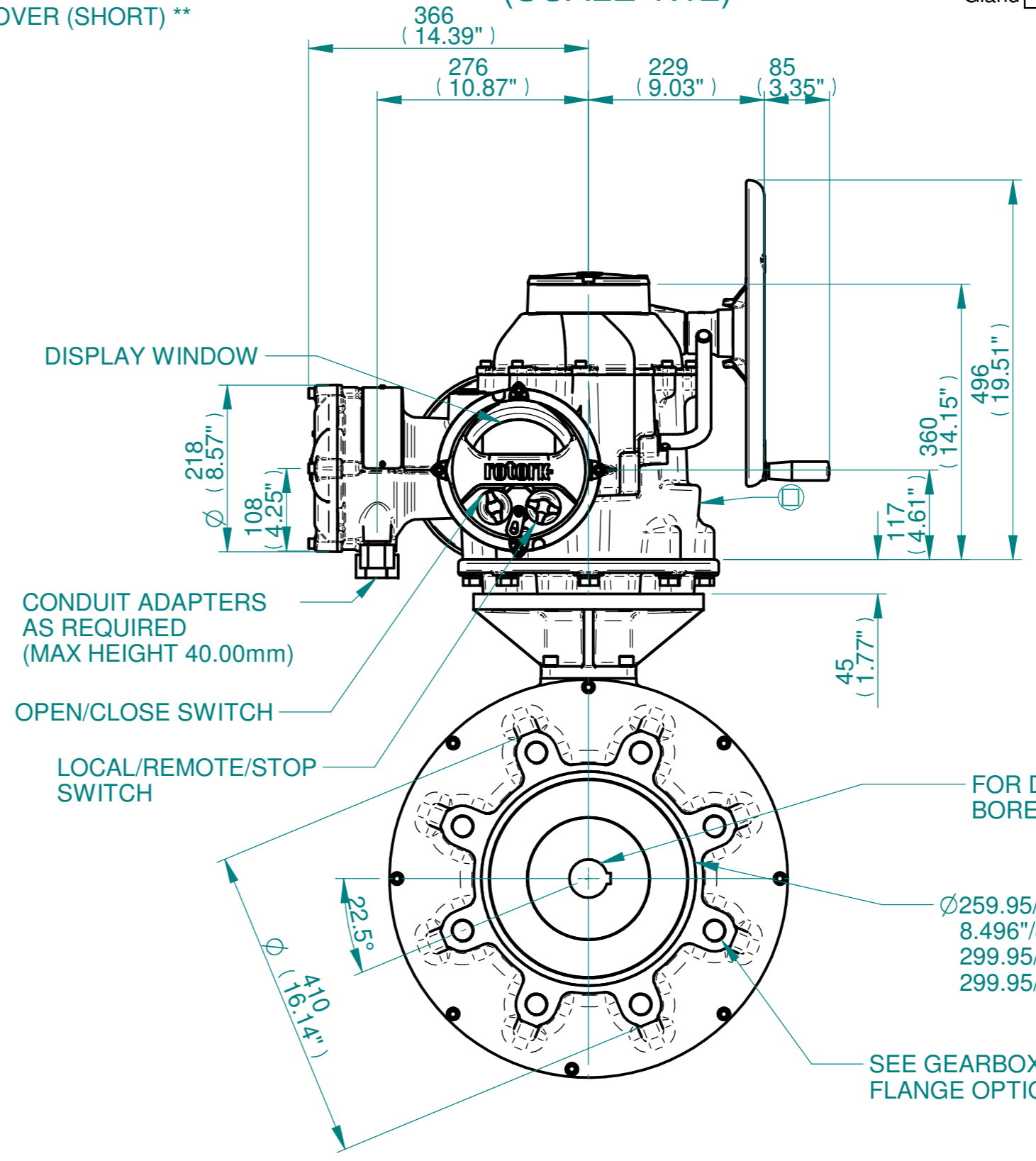
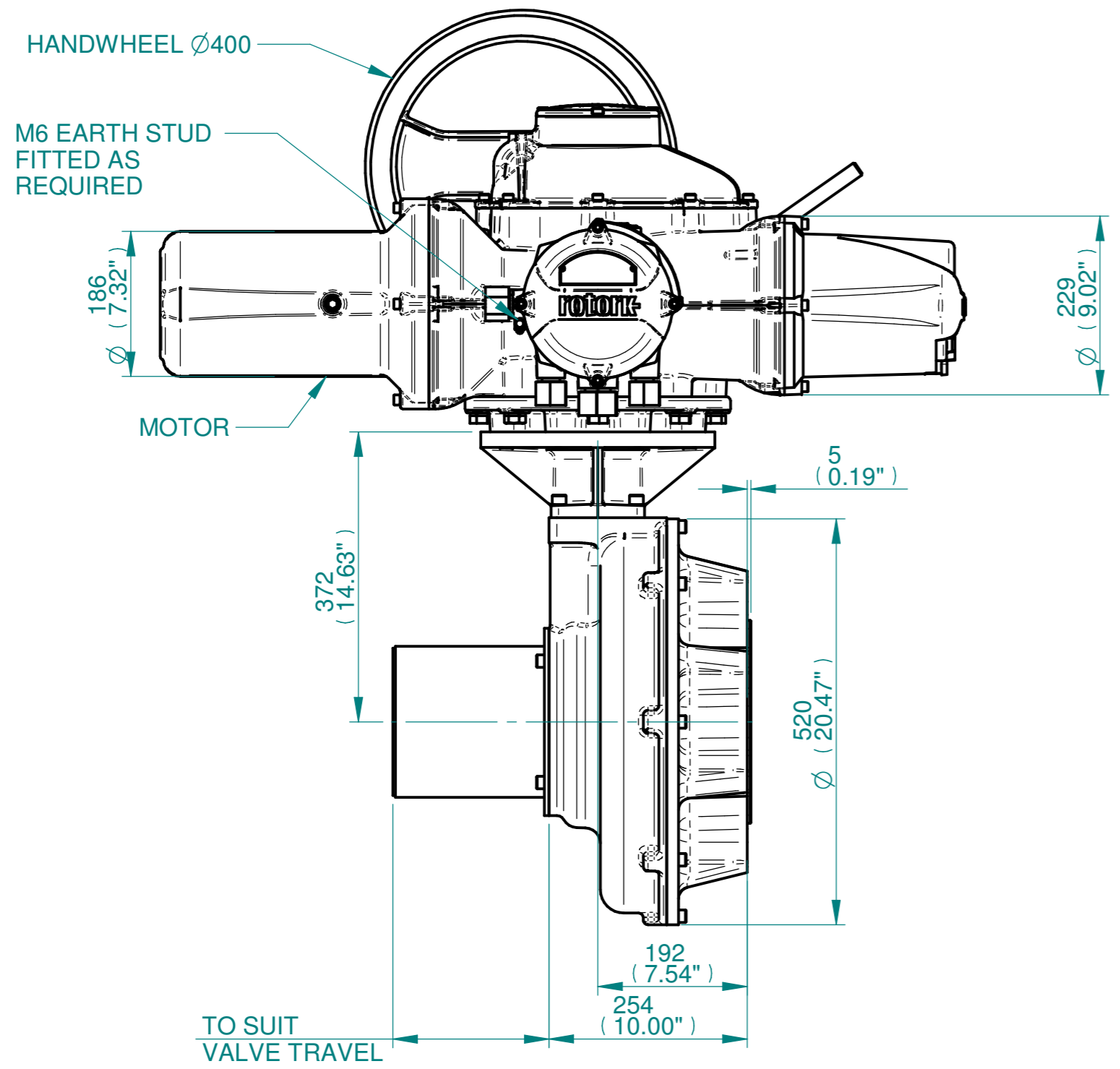
ISOMETRIC VIEW (SCALE 1:12)

NOTES:
 :DIMENSIONS WITH "*" INDICATE COVER REMOVAL ALLOWANCE
 :ELECTRONICS COVER OPTION "****" WILL VARY DEPENDING ON CONFIGURATION
 :NETT WEIGHT = F35:360kg/794lbs, F40:375kg/727lbs
 : = OIL FILLER/DRAIN PLUG
 :THE INTERFACE PROVIDED FOR MOUNTING THE ACTUATOR OR SECOND STAGE GEARBOX ONTO THE VALVE SHOULD CONFORM TO GOOD ENGINEERING PRACTICES, ENSURING ADEQUATELY TOLERANCED LIMITS FOR PARALLELISM, PERPENDICULARITY AND CONCENTRICITY.
 :ROTORK CANNOT BE HELD LIABLE FOR DAMAGE TO OUR EQUIPMENT CAUSED BY EXCESSIVE LOADING FROM COVER TUBES. (SEE ALSO PUB000-124)

CONDUIT ENTRIES



	Hole 1	Hole 2	Hole 3	Hole 4
Size	As Required	As Required	As Required	As Required
Plugged	As Required	As Required	As Required	As Required
Gland	As Required	As Required	As Required	As Required



Scale 1:6



Rotork Controls Limited
 Bath, BA1 3JQ, England.
 Telephone 01225-733200

Actuator Size: IQ70/90/95, IB13, F35/F40/FA35/FA40		Gearbox output flange options								Maximum Bore & Key			
Title IQ70/90/95, SIDE HANDWHEEL, IB13, F35/F40/FA35/FA40 Ratios 6:1 & 8:1 Installation Details		Designation	F35	F40	-	-	FA35	FA40	-	-	Key form	Ø Bore	Key size
Drawn TCE Checked NJC Date 19-AUG-14		No. Holes	8	8	-	-	8	8	-	-	Rectangle (BS4235)	121	32 X 18
Ref SALES Project Ref QUOTATION		Hole size	M30	M36	-	-	1" UNC	1-1/4" UNC	-	-	Rectangle (ANSI B17.1)	4-5/8"	1-1/4 X 7/8"
		PCD	356	406	-	-	14"	16"	-	-	Square (ANSI B17.1)	4-1/2"	1-1/4"

Issue	Description
2	4 ENTRY CHANGE

Scale: 1:12 THIRD ANGLE PROJECTION

Drawing Number	Issue No	Sheet No
I15SHWIB13STD	2	1 of 1