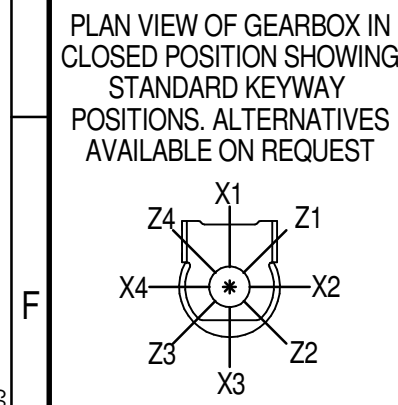
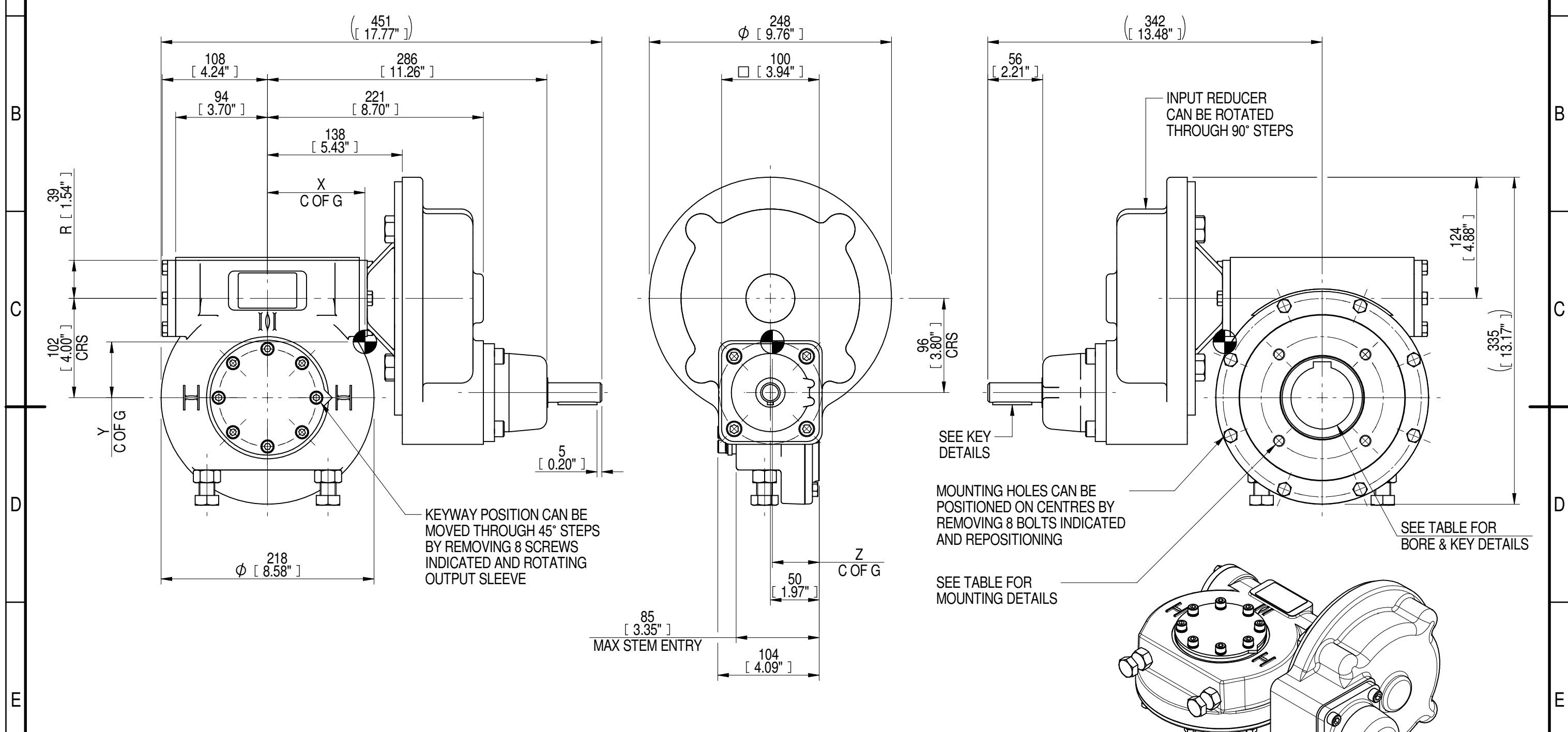


INPUT FLANGE DETAILS							MOUNTING HOLES - BOLT CIRCLE (OFF CENTRES)								
INPUT FLANGE	FLANGE O/DIA. + THICKNESS	SHAFT DIA.	RECESS DIA.	RECESS DEPTH	HOLE DETAILS (OFF CENTRES)	KEY DETAILS	ISO 5211 / MSS SP-101 MOUNTING OPTION	HOLE DETAILS (45° OFF CENTRES)	STANDARD	MIN BORE	SQ KEY MAX BORE	SQ KEY SIZE	RECT. KEY MAX BORE	RECT. KEY SIZE	SQ BORE MAX
-	-	Ø20.00-0.05 (Ø0.787"-0.002")	-	-	-	6x6x40 (0.24"x0.24"x1.57")	ISO F12*	4 x M12 x 16 (0.63") DEEP ON Ø125.0 (Ø4.92") P.C.	BS4235	-	-	-	64.0	18 x 11	□ 51.0 (2.01")
-	-	-	-	-	-	-	FA12*	4 x 1/2" UNC x 16 (0.63") DEEP ON Ø125.7 (Ø4.95") P.C.	ANSI B17.1	-	2.25"	5/8" SQ.	2.50"	5/8" x 7/16"	
-	-	-	-	-	-	-	-	-	DIN 6885	-	-	-	64.0	18 x 11	



NOTES:
 1. * THREAD DEPTH DOES NOT MATCH ISO STANDARD
 2. CENTRE OF GRAVITY POSITION IS INDICATIVE FOR STANDARD BUILD WHEN IN POSITION SHOWN

RATIO	TURNS TO CLOSE	M.A. ± 10%	WEIGHT (Kg)	MAX OUTPUT (Nm)	MAX INPUT (Nm)	X	Y	Z
420	105	132	41	2264	17	101	57	48
350	88	110	41	2264	21	100	56	48
240	60	86	41	2712	32	100	57	48
200	50	71	41	2617	37	99	57	48
DESCRIPTION			TORQUE			CENTRE OF GRAVITY		

AS PART OF CONTINUOUS PRODUCT DEVELOPMENT, ALL DETAILS SUBJECT TO CHANGE WITHOUT PRIOR NOTICE. FOR UP TO DATE DETAILS PLEASE VISIT www.rotork.com

rotork Gears
 LEEDS - UK
www.rotork.com

This drawing is confidential and is the property of Rotork Gears and must not be reproduced either wholly or partly. All rights in respect of patents, designs and copyrights are reserved. ©2016

Document Type **PUBLICITY**
 Dimensions in mm

Title
IW/MOW4 QUARTER TURN GEARBOX, 200/240/350/420 : 1, MANUAL INPUT : F12/ FA12 OUTPUT

Drawing Number
PUB-IW4FBIRL-MAN-F12

Sheet 1 of 1 Size A3