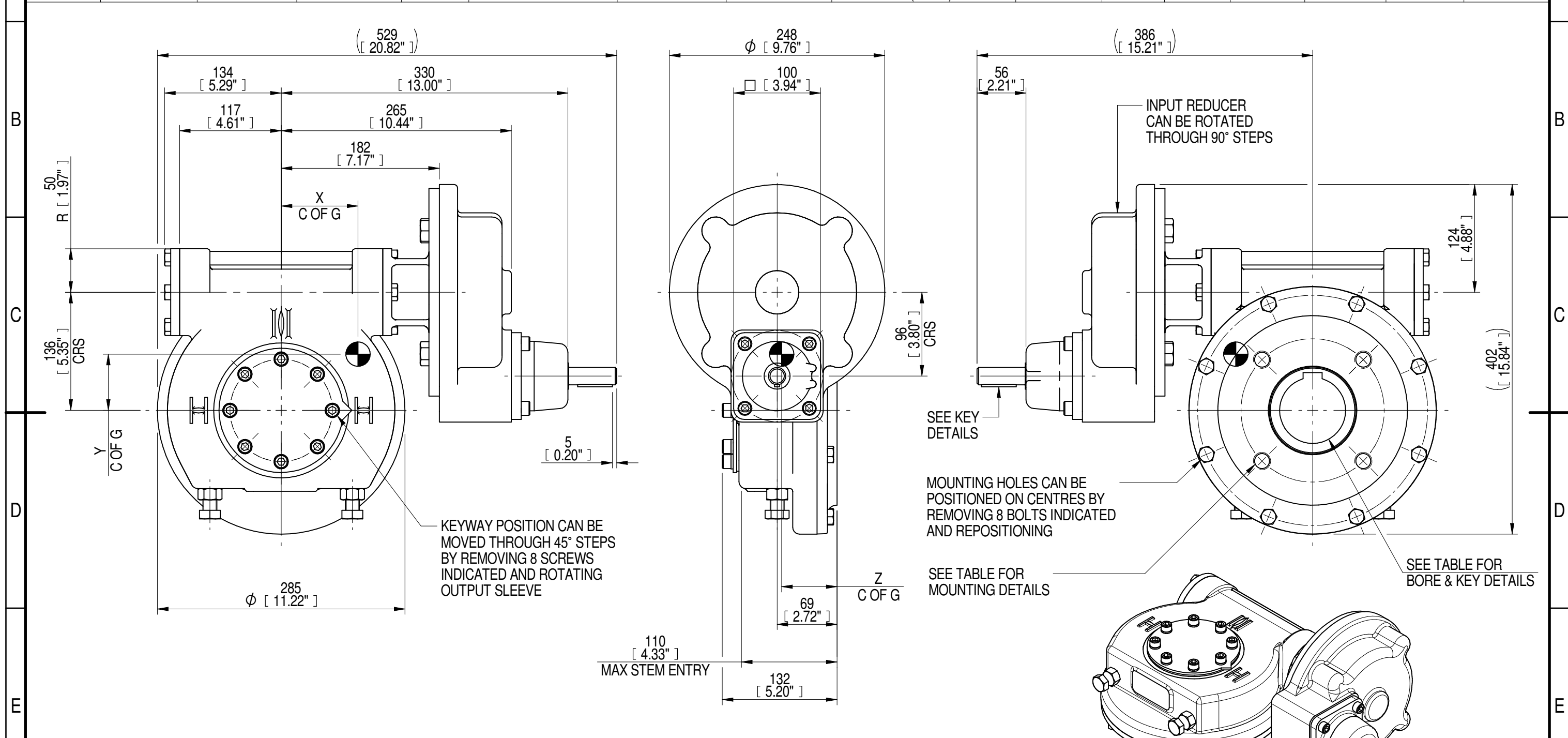
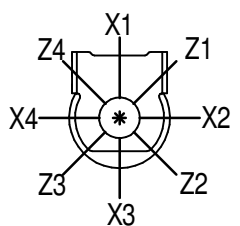


1	2		3		4		5		6		7		8		
INPUT FLANGE DETAILS							MOUNTING HOLES - BOLT CIRCLE (OFF CENTRES)								
INPUT FLANGE	FLANGE O/DIA. + THICKNESS	SHAFT DIA.	RECESS DIA.	RECESS DEPTH	HOLE DETAILS (OFF CENTRES)	KEY DETAILS	ISO 5211 / MSS SP-101 MOUNTING OPTION	HOLE DETAILS (45° OFF CENTRES)	STANDARD	MIN BORE	SQ KEY MAX BORE	SQ KEY SIZE	RECT. KEY MAX BORE	RECT. KEY SIZE	SQ BORE MAX
-	-	Ø20.00-0.05 (Ø0.787"-0.002")	-	-	-	6x6x40 (0.24"x0.24"x1.57")	ISO F16*	4 x M20 x 20 (0.79") DEEP ON Ø165.0 (Ø6.50") P.C.	BS4235	-	-	-	76.0	22 x 14	□ 62.0 (2.44")
-	-	-	-	-	-	-	FA16*	4 x 3/4" UNC x 20 (0.79") DEEP ON Ø165.0 (Ø6.50") P.C.	BS46	-	2.75"	3/4" SQ.	3.00"	3/4" x 1/2"	
-	-	-	-	-	-	-	-	-	ANSI B17.1	-	2.75"	5/8" SQ.	3.00"	3/4" x 1/2"	
-	-	-	-	-	-	-	-	-	DIN 6885	-	-	-	76.0	22 x 14	-



PLAN VIEW OF GEARBOX IN CLOSED POSITION SHOWING STANDARD KEYWAY POSITIONS. ALTERNATIVES AVAILABLE ON REQUEST



NOTES:
 1. * THREAD DEPTH DOES NOT MATCH ISO STANDARD
 2. CENTRE OF GRAVITY POSITION IS INDICATIVE FOR STANDARD BUILD WHEN IN POSITION SHOWN

RATIO	TURNS TO CLOSE	M.A. ± 10%	WEIGHT (Kg)	MAX OUTPUT (Nm)	MAX INPUT (Nm)	X	Y	Z
420	105	132	60	4820	37	90	65	64
350	88	110	60	4820	44	89	64	64
240	60	97	62	6670	69	89	65	64
200	50	81	61	6670	82	89	65	64
DESCRIPTION				TORQUE		CENTRE OF GRAVITY		

AS PART OF CONTINUOUS PRODUCT DEVELOPMENT, ALL DETAILS SUBJECT TO CHANGE WITHOUT PRIOR NOTICE. FOR UP TO DATE DETAILS PLEASE VISIT www.rotork.com

	This drawing is confidential and is the property of Rotork Gears and must not be reproduced either wholly or partly. All rights in respect of patents, designs and copyrights are reserved. ©2016	Document Type PUBLICITY	Title IW/MOW5 QUARTER TURN GEARBOX, 200/240/350/420 : 1 MANUAL INPUT : F16/ FA16 OUPUT
	LEEDS - UK www.rotork.com	Dimensions in mm 	Drawing Number PUB-IW5FBIRL-MAN-F16
		Sheet 1 of 1	Size A3