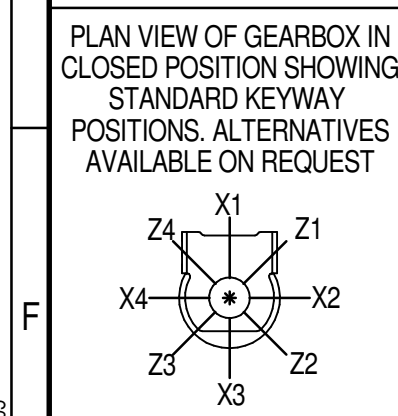
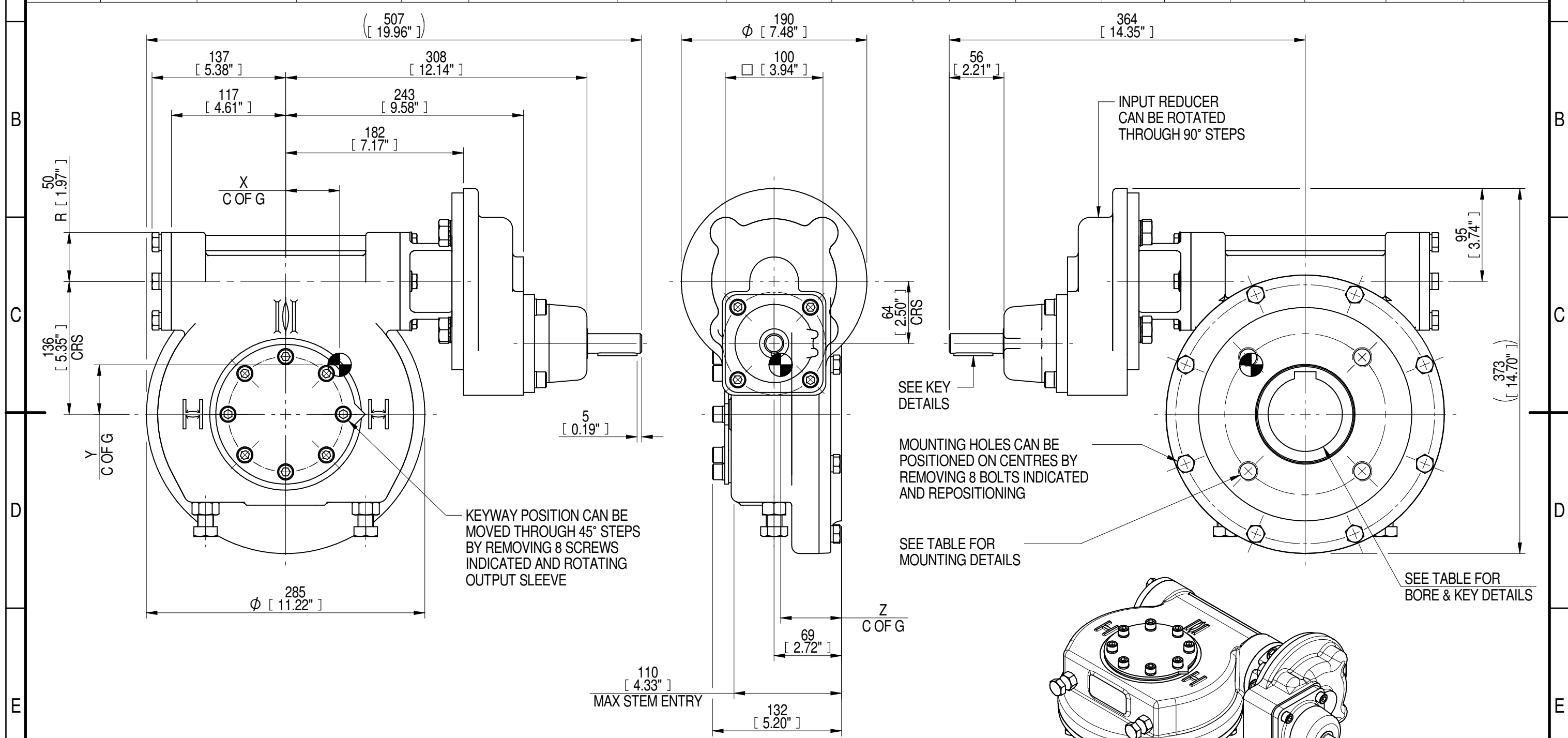


INPUT FLANGE DETAILS							MOUNTING HOLES - BOLT CIRCLE (OFF CENTRES)								
INPUT FLANGE	FLANGE O/DIA. + THICKNESS	SHAFT DIA.	RECESS DIA.	RECESS DEPTH	HOLE DETAILS (OFF CENTRES)	KEY DETAILS	ISO 5211 / MSS SP-101 MOUNTING OPTION	HOLE DETAILS (45° OFF CENTRES)	STANDARD	MIN BORE	SQ KEY MAX BORE	SQ KEY SIZE	RECT. KEY MAX BORE	RECT. KEY SIZE	SQ BORE MAX
-	-	Ø20.00-0.05 (Ø0.787"-0.002")	-	-	-	6x6x40 (0.24"x0.24"x1.57")	ISO F16*	4 x M20 x 20 (0.79") DEEP ON Ø165.0 (Ø6.50") P.C.	BS4235	-	-	-	76.0	22 x 14	□ 62.0 (2.44")
-	-	-	-	-	-	-	FA16*	4 x 3/4" UNC x 20 (0.79") DEEP ON Ø165.0 (Ø6.50") P.C.	BS46	-	2.75"	3/4" SQ.	3.00"	3/4" x 1/2"	
-	-	-	-	-	-	-	-	-	ANSI B17.1	-	2.75"	5/8" SQ.	3.00"	3/4" x 1/2"	
-	-	-	-	-	-	-	-	-	DIN 6885	-	-	-	76.0	22 x 14	-



NOTES:
 1. * THREAD DEPTH DOES NOT MATCH ISO STANDARD
 2. CENTRE OF GRAVITY POSITION IS INDICATIVE FOR STANDARD BUILD WHEN IN POSITION SHOWN

RATIO	TURNS TO CLOSE	M.A. ± 10%	WEIGHT (Kg)	MAX OUTPUT (Nm)	MAX INPUT (Nm)	X	Y	Z
160	40	65	49	8000	123	57	52	62
120	30	48	49	8000	167	56	51	62
80	20	32	49	8000	250	55	51	62
DESCRIPTION			TORQUE			CENTRE OF GRAVITY		

AS PART OF CONTINUOUS PRODUCT DEVELOPMENT, ALL DETAILS SUBJECT TO CHANGE WITHOUT PRIOR NOTICE. FOR UP TO DATE DETAILS PLEASE VISIT www.rotork.com

	This drawing is confidential and is the property of Rotork Gears and must not be reproduced either wholly or partly. All rights in respect of patents, designs and copyrights are reserved. ©2016	Document Type PUBLICITY Dimensions in mm	Title IW/MOW52 QUARTER TURN GEARBOX, 80/120/160 : 1 MANUAL INPUT : F16/ FA16 OUPUT
	LEEDS - UK www.rotork.com		Drawing Number PUB-IW52FBIRS-MAN-F16
		Sheet 1 of 1	Size A3