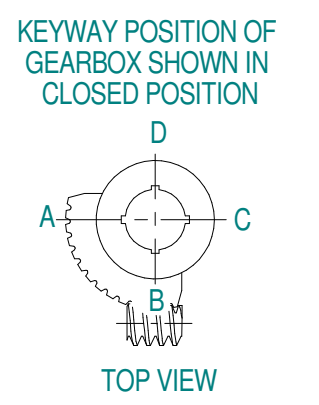
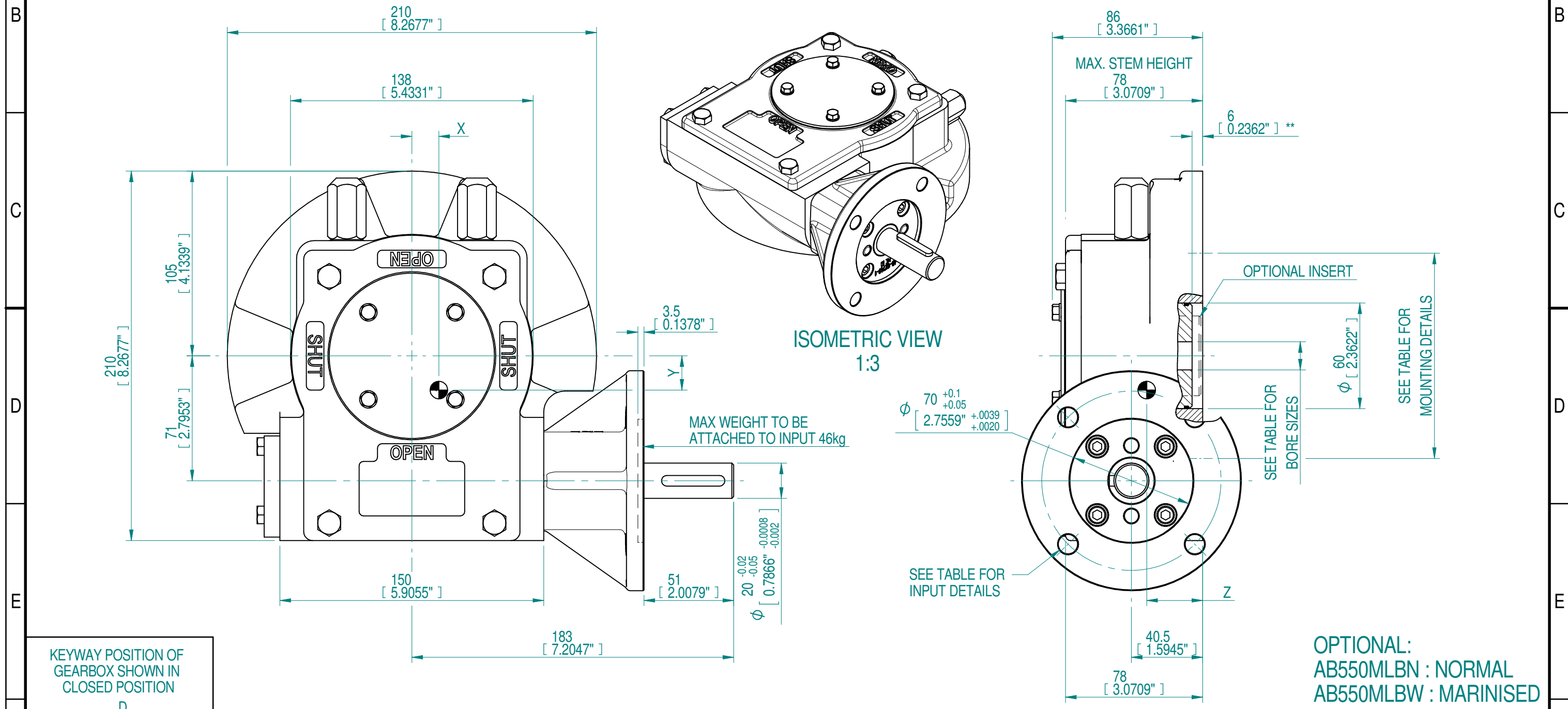


INPUT FLANGE DETAILS				MOUNTING HOLES - BOLT CIRCLE (OFF CENTRES)				STEM ACCEPTANCE IN ACCORDANCE TO STANDARD					
INPUT FLANGE	FLANGE O/DIA.	HOLE DETAILS (OFF CENTRES)	KEY DETAILS	ISO 5211 / MSS SP-101 MOUNTING OPTION	HOLE DETAILS (OFF CENTRES)	MAX OUTSIDE DIA. INCLUDING DRILLED HOLES	MIN INSIDE DIA. INCLUDING DRILLED HOLES	BORE MACHINED IN	STANDARD	MIN BORE	RECT. KEY MAX BORE	RECT. KEY SIZE	SQ BORE MAX
F10	Ø125 (Ø4.92")	4x Ø11 ON A Ø102P.C. (4x Ø0.43" ON A Ø4.02"P.C.)	6x6x36 (0.24"x0.24"x1.42")	F07 (FA07)	4x M8* x 11 DEEP ON A Ø70P.C. (4x 5/16"UNC x 0.43" DEEP ON A 2.75"P.C.)	Ø190 (Ø7.48")	Ø62 (Ø2.44")	QUADRANT	DIN 6885	Ø16	Ø45	14 x 9	□ 38
				F10 (FA10)	4x M10* x 13 DEEP ON A Ø102P.C. (4x 3/8"UNC x 0.51" DEEP ON A Ø4"P.C.)				BS46	Ø0.63"	Ø1.8218"	1/2 x 5/16	□ 1.5"
				F12 (FA12)	4x M12* x 16 DEEP ON A Ø125P.C. (4x 1/2"UNC x 0.63" DEEP ON A 4.95"P.C.)				DIN 6885	-	Ø30	8 x 7	□ 27
				F14 (FA14)	4x M16* x 18 DEEP ON A Ø140P.C. (4x 5/8"UNC x 0.71" DEEP ON A 5.5"P.C.)				BS46	-	Ø1.2175"	5/16 x 1/4	□ 1.06"
				F16 (FA16)	4x M20* x 18 DEEP ON A Ø165P.C. (4x 3/4"UNC x 0.71" DEEP ON A 6.5"P.C.)								



NOTES:

- * THREAD DEPTH DOES NOT MATCH ISO STANDARD
- ** DIMENSION WITH INSERT IS 1 [0.04"]

RATIO	TURNS TO CLOSE	M.A.	WEIGHT EXCL. HW	MAX OUTPUT	MAX INPUT	X	Y	Z
34 : 1	8.5	12.0 ± 15%	13.8 kg 30.4 lbs	1000 Nm 8851 lbf.in.	83 Nm 738 lbf.in.	15.4 0.61"	19.5 0.77"	31.8 1.25"

AS PART OF CONTINUOUS PRODUCT DEVELOPMENT, ALL DETAILS SUBJECT TO CHANGE WITHOUT PRIOR NOTICE. FOR UP TO DATE DETAILS PLEASE VISIT www.rotork.com

rotork Gears

This drawing is confidential and is the property of Rotork Gears and must not be reproduced either wholly or partly. All rights in respect of patents, designs and copyrights are reserved. © 2016

Document Type: **DETAIL DRAWING**

Dimensions in mm
Scale: 1:2.22

Created: **robbin.goosen** 21-12-2016
Checked: **Henk Hoff** 21-12-2016
Approved: _____

Title: **AB550 MOTORISED LARGE BASE G-DUTY LEFT HAND SHAFT PROTRUSION**

Drawing Number: **AB550MLBG LH** Iss. 01

Sheet 1 of 1 Size A3