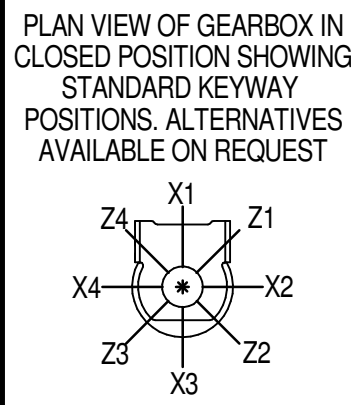
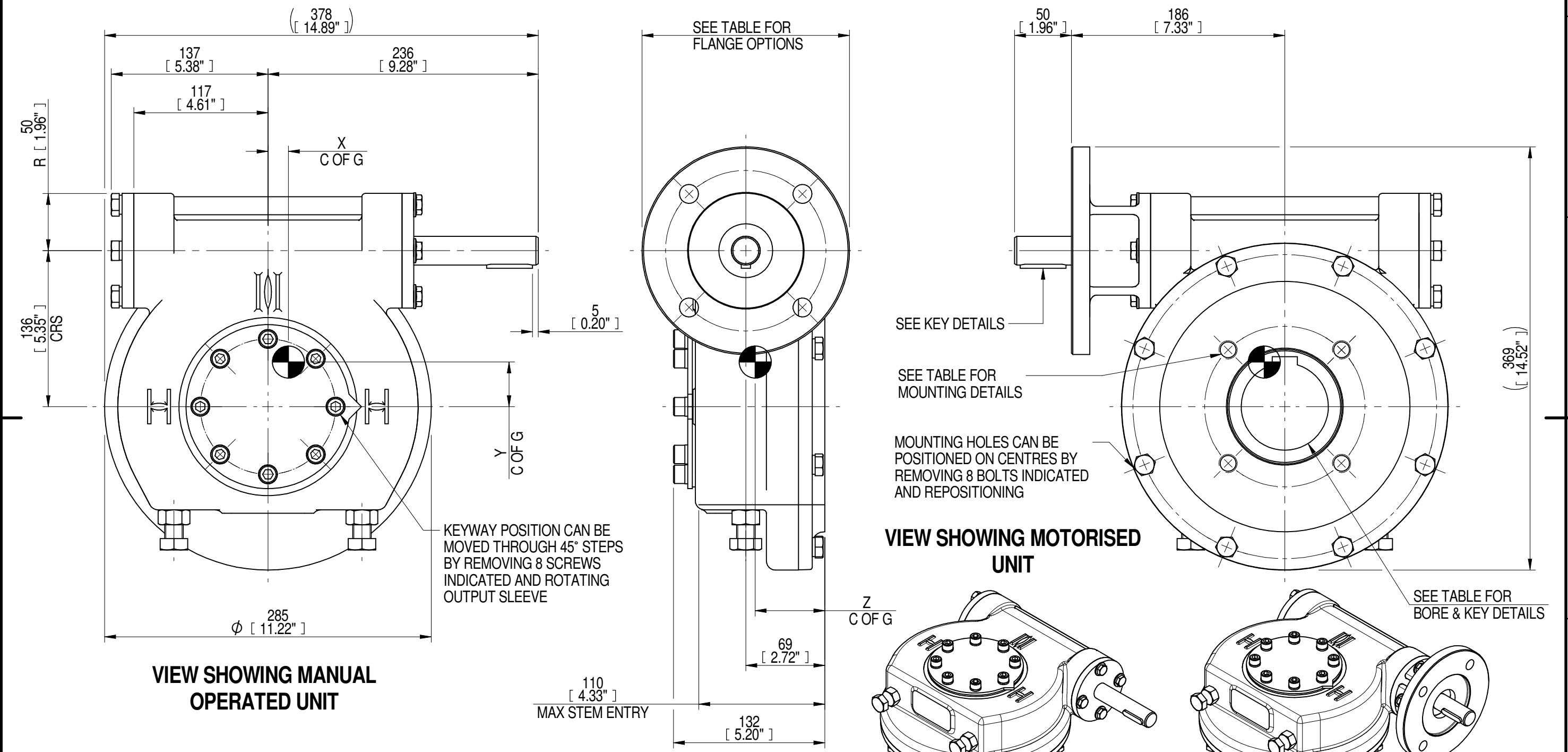


Rev.05

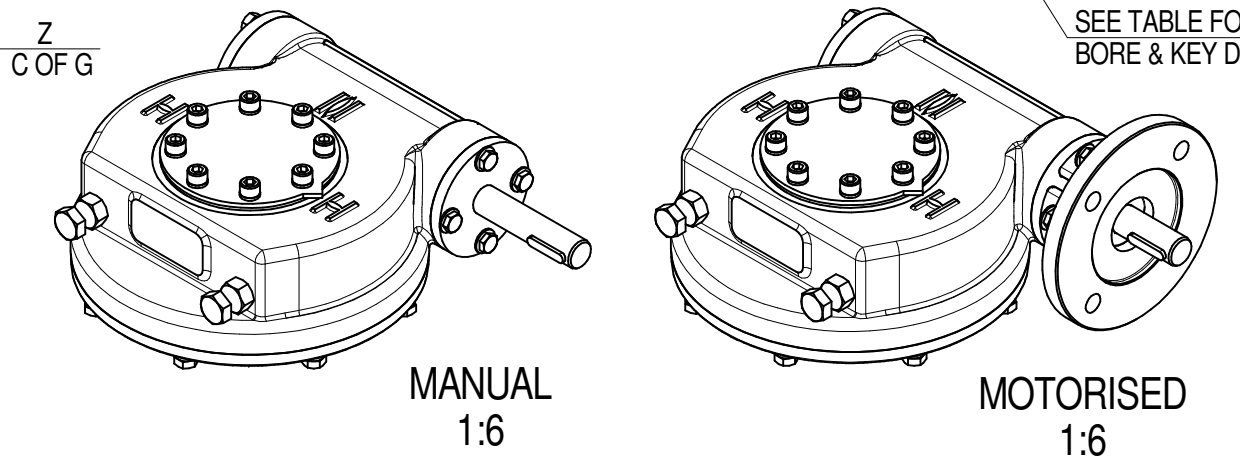
1		2		3		4		5		6		7		8	
INPUT FLANGE DETAILS							MOUNTING HOLES - BOLT CIRCLE (OFF CENTRES)								
INPUT FLANGE	FLANGE O/DIA. + THICKNESS	SHAFT DIA.	RECESS DIA.	RECESS DEPTH	HOLE DETAILS (45° OFF CENTRES)	KEY DETAILS	ISO 5211 / MSS SP-101 MOUNTING OPTION	HOLE DETAILS (45° OFF CENTRES)	STANDARD	MIN BORE	SQ KEY MAX BORE	SQ KEY SIZE	RECT. KEY MAX BORE	RECT. KEY SIZE	SQ BORE MAX
ISO F14	Ø181 x 16 (Ø7.13" x 0.63")	Ø25.00-0.05 (Ø0.984"-0.002")	Ø100.05+0.15 (Ø3.939"+0.006")	5 (0.20")	4 x Ø16.5 ON Ø140.0 P.C. (4 x Ø0.65" ON Ø5.51" P.C.)	8x7x40 (0.31"x0.28"x1.57")	ISO F14*	4 x M16 x 20 (0.79") DEEP ON Ø140.0 (Ø5.51") P.C.	BS4235	-	-	-	76.0	22 x 14	□ 62.0 (2.44")
FA14			Ø95.25+0.15 (Ø3.750"+0.006")					BS46	-	2.75"	3/4" SQ.	3.00"	3/4" x 1/2"		
								ANSI B17.1	-	2.75"	5/8" SQ.	3.00"	3/4" x 1/2"		
							FA14*	4 x 5/8" UNC x 20 (0.79") DEEP ON Ø139.7 (Ø5.50") P.C.	DIN 6885	-	-	-	76.0	22 x 14	



NOTES:  
1. \* THREAD DEPTH DOES NOT MATCH ISO STANDARD  
2. CENTRE OF GRAVITY POSITION IS INDICATIVE FOR STANDARD BUILD WHEN IN POSITION SHOWN

40	10	17	40	4867	286	18	39	61
RATIO	TURNS TO CLOSE	M.A. ± 10%	WEIGHT (Kg)	MAX OUTPUT (Nm)	MAX INPUT (Nm)	X	Y	Z
DESCRIPTION				TORQUE		CENTRE OF GRAVITY		

VIEW SHOWING MOTORISED UNIT



AS PART OF CONTINUOUS PRODUCT DEVELOPMENT, ALL DETAILS SUBJECT TO CHANGE WITHOUT PRIOR NOTICE. FOR UP TO DATE DETAILS PLEASE VISIT [www.rotork.com](http://www.rotork.com)

**rotork**® Gears

LEEDS - UK

[www.rotork.com](http://www.rotork.com)

Document Type **PUBLICITY**

Dimensions in mm

Title  
**IW/MOW52 QUARTER TURN GEARBOX, 40 :1**  
**MANUAL F14/ FA14 INPUT : F14/ FA14**  
**OUTPUT**

Drawing Number  
**PUB-IW52FB-F14-F14**

Sheet **1** of **1** Size **A3**

This drawing is confidential and is the property of Rotork Gears and must not be reproduced either wholly or partly. All rights in respect of patents, designs and copyrights are reserved. ©2016

Iss. **01**