

CIRCUIT IS DRAWN FOR A VALVE IN THE FULLY CLOSED POSITION

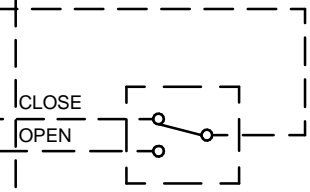
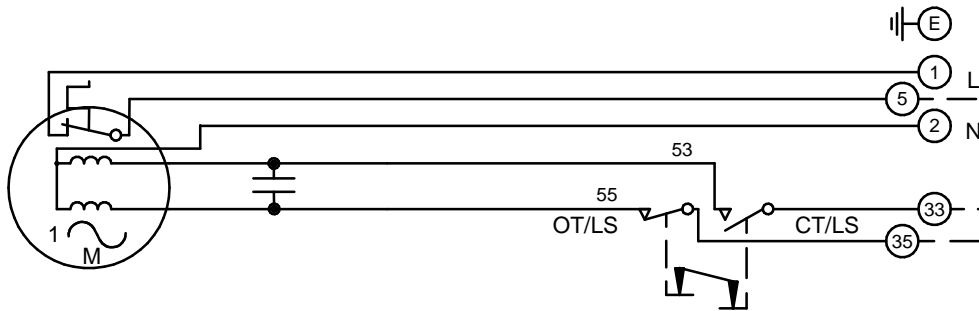
CIRCUIT IS DRAWN FOR A VALVE IN THE FULLY CLOSED POSITION

Circuit Diagram No - Issue No

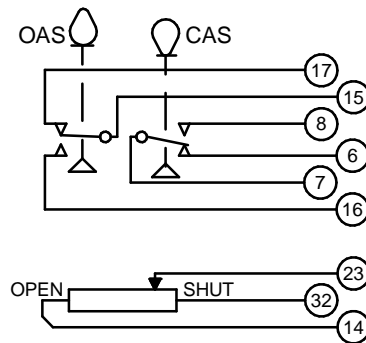
2S02Q00 - 3

**WARNING**

IT IS ESSENTIAL THAT REMOTE CONTROL CIRCUITS ARE DESIGNED SO THAT AN OPEN AND A CLOSE SIGNAL CAN NEVER BE APPLIED SIMULTANEOUSLY.



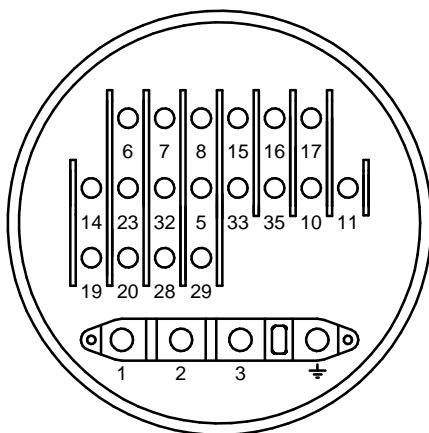
S.P.D.T. SWITCH OR EQUIVALENT



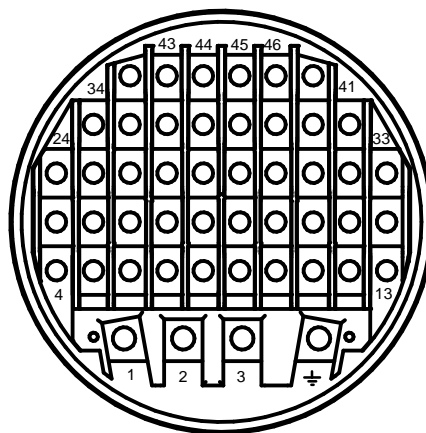
OT/LS - OPEN TORQUE/LIMIT SWITCH.  
 CT/LS - CLOSE TORQUE/LIMIT SWITCH.  
 OAS - OPEN AUXILIARY SWITCH.  
 CAS - CLOSE AUXILIARY SWITCH.

WIRES ARE IDENTIFIED AT EACH END BY TERMINAL NUMBER OR NUMBER SHOWN.

ALLOW MINIMUM 2 SECOND DELAY WHEN CONTROL SIGNALS ARE REVERSED TO ENSURE MOTOR REVERSAL.



TERMINAL BUNG (FOR WT ACTUATOR)



TERMINAL BUNG (FOR WTC ACTUATOR)

Q - STANDARD + POTENTIOMETER.

Iss	Date	Chkd	Revision Details
01		PGS	SIMILAR TO 2S02Q00 JOB NO ----
02	190292	T.W	WARNING NOTE ADDED. CHECKED K.S 190292
03	260417	JS	PAK TERMINAL BUNG INTRODUCED FOR WTC APPLICATION EC7024.

[www.rotork.com](http://www.rotork.com)

ROTORK CONTROLS LTD  
 BATH, BA1 3JQ  
 ENGLAND  
 Tel:01225-733200

ROTORK CONTROLS INC  
 ROCHESTER  
 NY 14624, USA  
 Tel:585-247-2304

Drawn by: K.S  
 Date : 020490  
 Base WD: 2S02Q00  
 Job No : ---  
 MI No : .

Circuit Diagram No  
**2S02Q00**  
 Issue No  
**3**