

CIRCUIT IS DRAWN FOR A VALVE IN THE FULLY CLOSED POSITION

WARNING

DO NOT RUN ACTUATOR TO LIMITS WITH INCORRECT PHASE ROTATION.

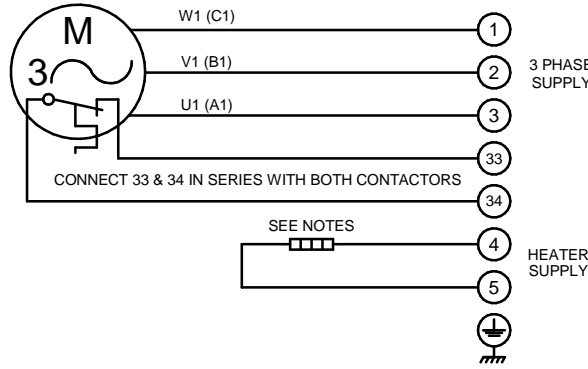
WHERE DISTANCES ARE GREAT BETWEEN ACTUATOR AND CONTROL GEAR, CABLE CAPACITANCE MAY CAUSE CONTACTORS TO STICK ON A.C. CIRCUITS

CONNECT OT/LS IN SERIES WITH OPEN CONTACTOR

CONNECT CT/LS IN SERIES WITH CLOSE CONTACTOR

THERMOSTAT MUST BE CONNECTED IN SERIES WITH BOTH MOTOR CONTACTOR COILS.

THERMOSTAT RATING 70VA MAX



O - OPEN
C - CLOSE

T/LS - TORQUE/LIMIT SWITCHES

OAS1 - AUXILIARY LIMIT SWITCHES
CAS1 - MAKE CONTACT AT END OF TRAVEL

OAS2 - AUXILIARY LIMIT SWITCHES
CAS2 - BREAK CONTACT AT END OF TRAVEL

LINK SUPPLIED BY ROTORK

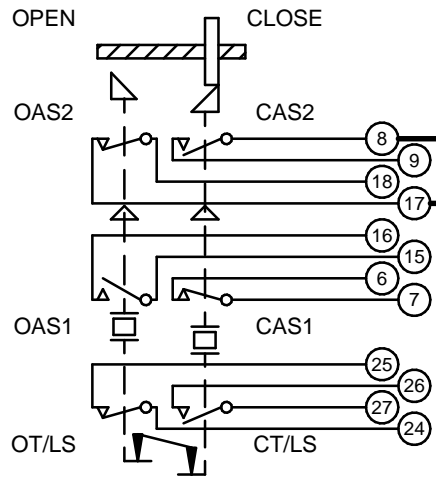
WIRES ARE IDENTIFIED AT EACH END BY TERMINAL NUMBERS OR BY WIRE NUMBERS SHOWN.

CAUTION
SOLID STATE LOGIC SYSTEMS USING ACTUATOR SWITCH SIGNAL INPUTS MUST BE DESIGNED TO PROVIDE A SWITCHING LOAD OF 1 WATT & 24V MINIMUM WITH A TIME CONSTANT NOT LESS THAN 10ms TO MINIMISE SENSITIVITY TO CONTACT VIBRATION.

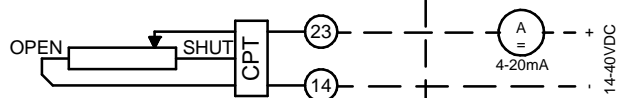
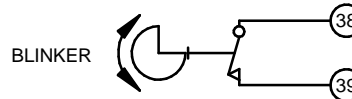
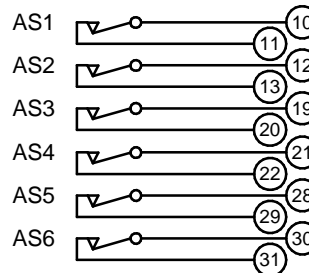
AS1,2,3,4,5,6 - AUXILIARY SWITCHES ADJUSTABLE TO OPERATE INDIVIDUALLY AT ANY POSITION TO MAKE OR BREAK.

AS1 TO 6 AUXILIARY SWITCHES. CONTACT FUNCTIONS MAY BE REVERSED BY SETTING OF CAM TO RELEASE INSTEAD OF DEPRESS SWITCH AS ILLUSTRATED.

12W (MAX) HEATER FITTED AS STANDARD. UNLESS OTHERWISE REQUESTED, HEATERS FITTED WILL BE :
120V (2K OHM) FOR 60HZ SUPPLIES, OR
240V (5.6K OHM) FOR 50HZ SUPPLIES.



ADD-ON-PAK



TORQUE AND LIMIT SWITCH OPERATION			
SWITCH	OPEN	INTER	SHUT
OT/LS		■	
CT/LS	■		
CAS1			■
CAS2	■		
OAS1	■		
OAS2		■	

■ INDICATES SWITCH MADE

Iss	Date	Chkd	Revision Details
1	071117	JC1	First Issue.

www.rotork.com

ROTORK CONTROLS LTD
BATH, BA1 3JQ
ENGLAND
Tel:01225-733200

ROTORK CONTROLS INC
ROCHESTER
NY 14624, USA
Tel:585-247-2304

SYNCROSET + 6SW AOP + POT +
BLINKER + EXT PWR CPT MKII

Drawn by: PJW
Date : 071117
Base WD: .
Job No : .
MI No : .

Circuit Diagram No
4261-30

Issue No
1