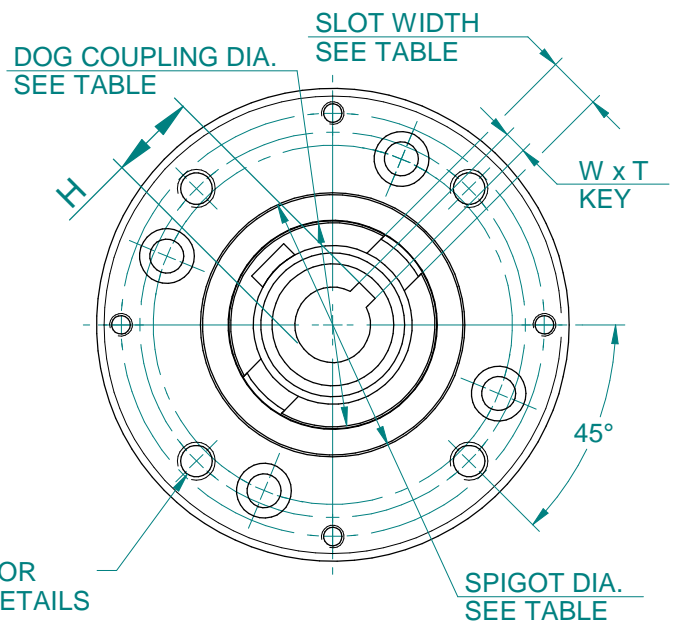
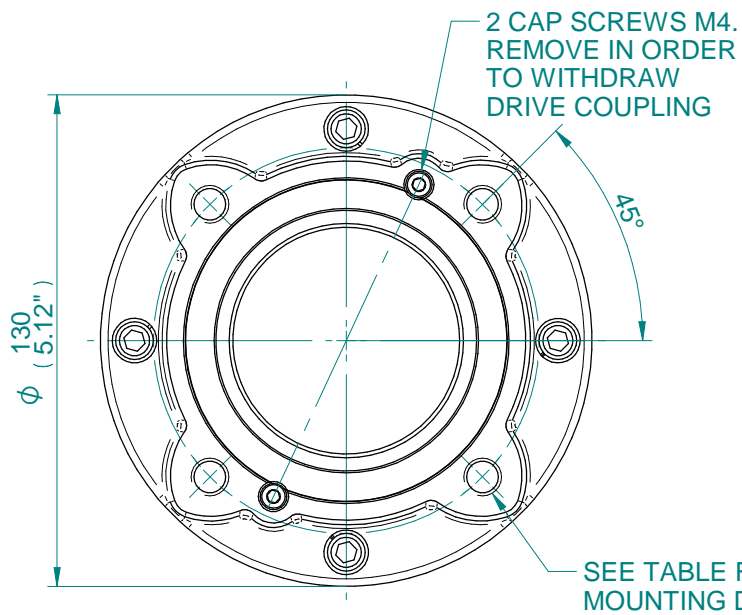
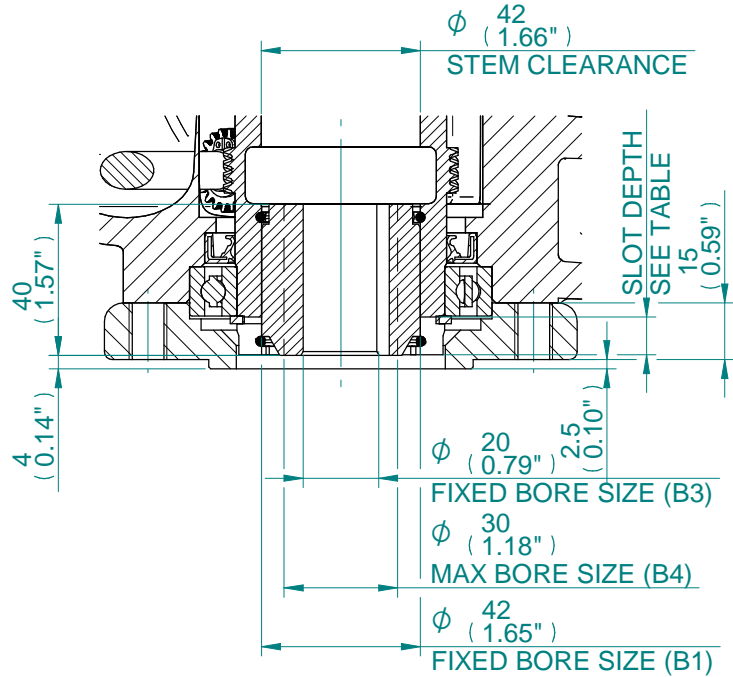
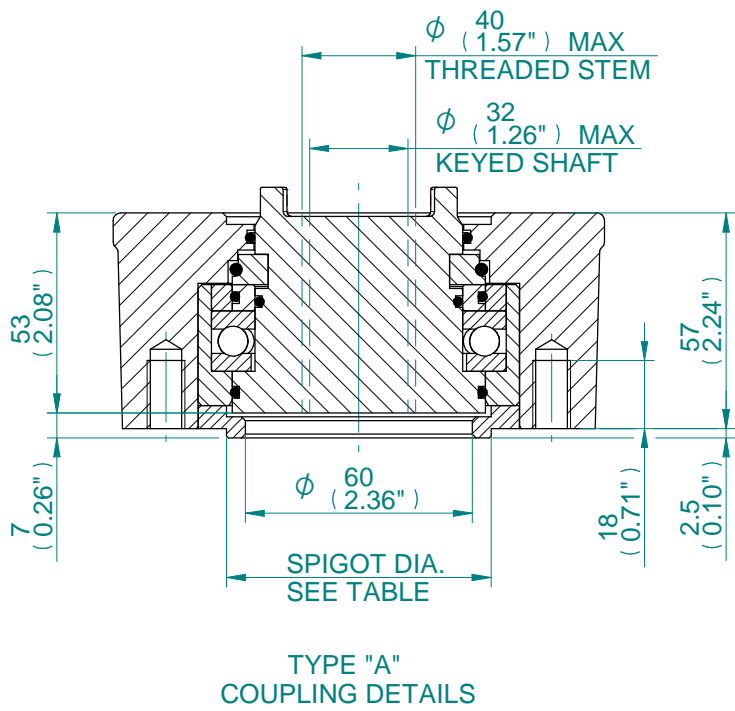


CONDUIT ENTRY HOLE		
Hole	Metric	NPT
A	M32	1 1/4"
B	M25	3/4"
C	M20	3/4"

PARAMETER	VALUE	DESCRIPTION
DRAWING TYPE	A	INSTALLATION DRAWING
ACTUATOR	2	CK(R)120
GEARBOX1	00	NO G.B.1.
GEARBOX2	NO	NO G.B.2
CENTORNIK / TERMINAL	S	SET / 3 COND
MECHANISM / MOTOR	S	STD. MECH/SMALL MOT.
HANDWHEEL / REAR / FRONT	0	STD.H.W./STD.REAR./STD.FRNT.
ORIENTATION	0	STD. ORIENT.

- NOTE:
- THRUST BASE. PLEASE REFER TO THE TECHNICAL DATA SECTION OF BROCHURE FOR DETAILS OF MAXIMUM AXIAL THRUST RATINGS.
 - BASEPLATE DETAILS: F10/FA10.
 - DIMENSIONS WITH '*' INDICATE COVER REMOVAL ALLOWANCE
 - THE INTERFACE PROVIDED FOR MOUNTING THE ACTUATOR OR SECOND STAGE GEARBOX ONTO THE VALVE SHOULD CONFORM TO GOOD ENGINEERING PRACTICES, ENSURING ADEQUATELY TOLERANCED LIMITS FOR PARALLELISM, PERPENDICULARITY AND CONCENTRICITY.
 - ROTORC CANNOT BE HELD LIABLE FOR DAMAGE TO OUR EQUIPMENT CAUSED BY EXCESSIVE LOADING FROM COVER TUBES, HANDWHEEL AND HAND LEVER.

CK range	Drawn	R.TAMIL	30-01-18	Title	DIMENSIONAL DRAWING, CK120 & CKR120, 3 CONDUIT ENTRIES, SMALL MOTOR, STANDARD ORIENTATION	A4	Doc Number	Ver No	Scale	Sheet No
	Checked	BHARAT	30-01-18							
	Approved	JOSE	30-01-18							
This drawing and the information it contains are property of Rotork Controls Limited, and they will not be reproduced or disclosed, in whole or in part, without the prior written consent of Rotork.					A200N0SS00X					
					1					
					NTS					
					1 of 2					



B1, B3 & B4 KEY DETAILS	
DESCRIPTION	F10/FA10
KEY (B1) WxT	12x8
KEY (B3) WxT	6x6
MAX. KEY (B4) WxT	8x7
H (B1)	45.3
H (B3)	22.8
H (B4) MAX	33.3

DOG COUPLING DETAILS	
SLOT WIDTH	14
SLOT DEPTH	10
DOG COUPLING DIA.	ϕ 54

BASEPLATE MOUNTING DETAILS			
TYPE	BASEPLATE	SPIGOT DIA.	HOLE DETAILS (45° OFF CENTRES)
ISO F10	STANDARD	ϕ 69.970/69.924	4 HOLES M10x15 (0.59") DEEP ON ϕ 102.0 (ϕ 4.02") P.C.
		ϕ 2.310/2.305"	4 HOLES 3/8"UNCx15 (0.59") DEEP ON ϕ 101.6 (ϕ 4.00") P.C.
FA10			

CK range	Drawn	R.TAMIL	30-01-18
	Checked	BHARAT	30-01-18
	Approved	JOSE	30-01-18

Title	DIMENSIONAL DRAWING, CK120 & CKR120, 3 CONDUIT ENTRIES, SMALL MOTOR, STANDARD ORIENTATION
--------------	---

A4	Doc Number	Ver No	Scale	Sheet No
	A200N0SS00X	1	NTS	2 of 2