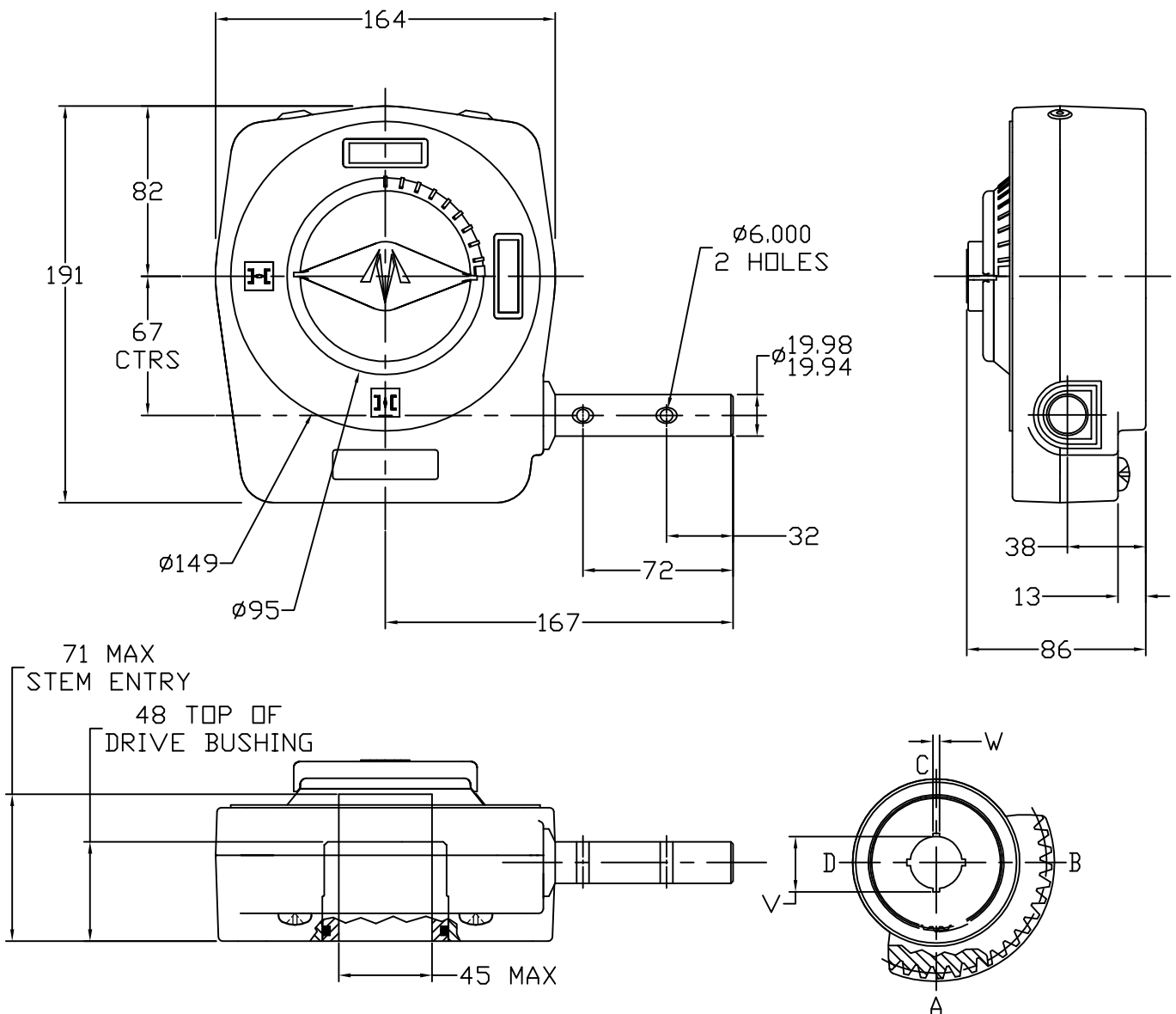


ACTUATOR: 9807

SLO39



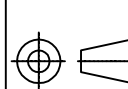
OUTPUT KEYWAY DETAILS
(SHOWN IN OPEN POSITION)

GENERAL INFORMATION

TRAVEL..... $90^\circ \pm 5^\circ$ AT BOTH ENDS	MAX. OUTPUT TORQUE (1000 CYCLES)..1200 Nm
RATIO.....42:1	MAX. OUTPUT TORQUE (2000 CYCLES)..1000 Nm
URNS TO CLOSE.....10.5	MAX. INPUT TORQUE (1000 CYCLES).....106 Nm
MECH. ADVANTAGE....11.3 $\pm 10\%$	MAX. INPUT TORQUE (2000 CYCLES).....88 Nm

MOUNTING HOLE DETAIL: PREFERRED....F16 (4 x M20 ON 165 BCD)
 (BSENISO 5211:2001) MAXIMUM.....F16
 MINIMUM.....F10 (4 x M10 ON 102 BCD)

APPROXIMATE WEIGHT.....5 KG



DIMENSIONS
IN
MM

SCALE
1:3

DRAWING
No.
9807

THIS PRINT IS CONFIDENTIAL AND IS THE PROPERTY OF MASTERGEAR. THIS PRINT SHALL NOT BE USED, COPIED OR REPRODUCED IN WHOLE OR IN PART NOR SHALL THE CONTENTS BE REVEALED IN ANY MANNER TO ANYONE UNLESS WRITTEN PERMISSION IS OBTAINED FROM MASTERGEAR.

ST

REV. A
3/25/08