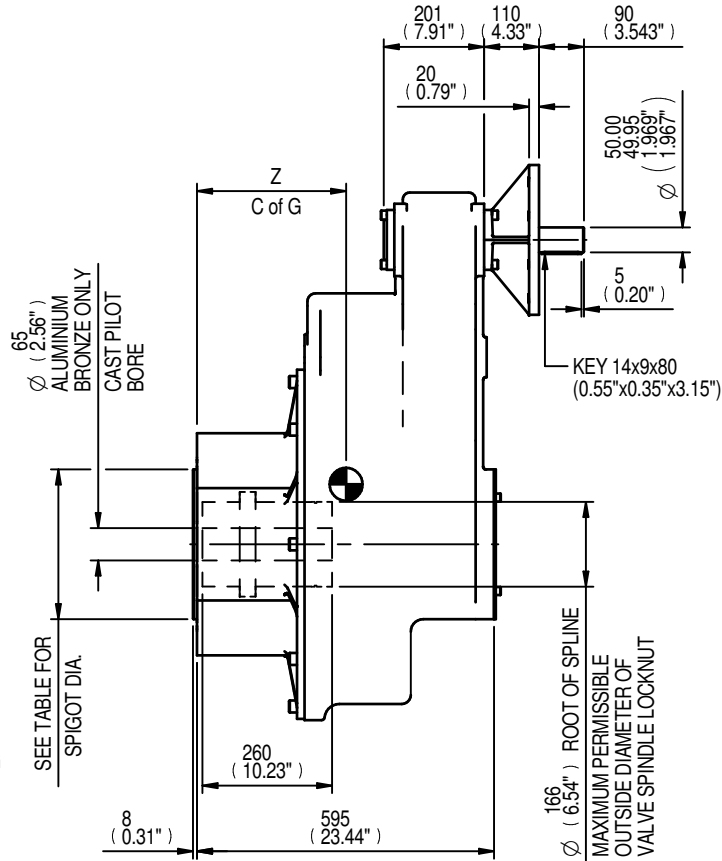


SEE TABLE FOR BORE & KEY DETAILS

SEE TABLE FOR BASEPLATE DETAILS

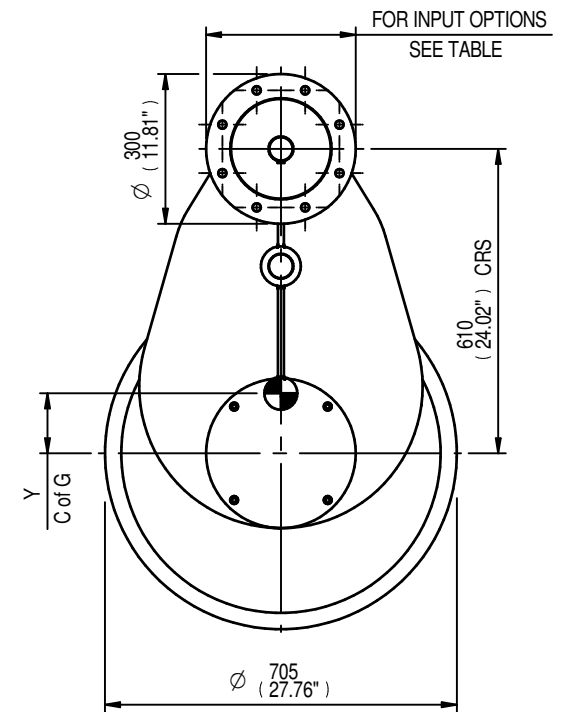
MOUNTING HOLES CAN BE POSITIONED ON CTRS BY REMOVING 8 BOLTS INDICATED AND REPOSITIONING



65
Ø (2.56")
ALUMINIUM
BRONZINE ONLY
CAST PILOT
BORE

SEE TABLE FOR
SPIGOT DIA.

166
Ø (6.54")
ROOT OF SPLINE
MAXIMUM PERMISSIBLE
OUTSIDE DIAMETER OF
VALVE SPINDLE LOCKNUT



FOR INPUT OPTIONS
SEE TABLE

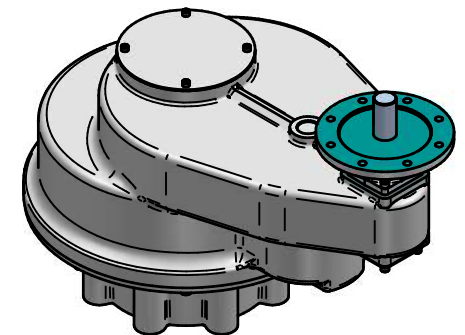
RATIO	M.A.	C.O.G.			MAX. OUTPUT TORQUE Nm (lbs.ft)
		X	Y	Z	
15	13.650	0	115	306	43386 (32000)
24	21.680	0	112	309	43386 (32000)

MAX BORE SQ KEY			MAX BORE RECTANGULAR KEY		
STD	BORE	KEY	STD	BORE	KEY
BS4235	-	-	BS4235	130.0	32x18
BS46	4.625"	1 1/4" SQ	BS46	5.000"	1 1/4"x7/8"
ANSI B17.1	4.625"	1 1/4" SQ	ANSI B17.1	5.000"	1 1/4"x7/8"

MAX STEM SCREW
ACCEPTANCE DIA.
150(5.875")

	INPUT FLANGE DETAILS					
	FLANGE	SHAFT	RECESS	RECESS	HOLE DETAILS	KEY
	O/DIA. & THICKNESS	DIA.	DIA.	DEPTH	22.5"(OFF CENTRES)	DETAILS
ISO F25	Ø300 x 20	Ø50.00-0.05	Ø200.10+0.10	5	8 HOLES Ø16.5 (Ø0.65")	14x9x80
	(Ø11.81" x 0.79")	(Ø1.969"-0.002")	(Ø7.878"+0.004")	(0.20")	ON Ø254.0 (Ø10.00") P.C.	(0.55"x0.35"x3.15")
FA25	Ø300 x 20	Ø50.00-0.05	Ø152.37+0.10	5	8 HOLES Ø16.5 (Ø0.65")	14x9x80
	(Ø11.81" x 0.79")	(Ø1.969"-0.002")	(Ø5.999"+0.004")	(0.20")	ON Ø254.0 (Ø10.00") P.C.	(0.55"x0.35"x3.15")

	BASEPLATE DETAILS	
	SPIGOT DIA.	HOLE DETAILS (22.5" OFF CENTRES)
	ISO F40	Ø299.95-0.05
FA40	Ø228.60-0.15	8 HOLES 1.25"UNCx45 (1.77") DEEP (Ø9.000"-0.006") ON Ø406.4 (Ø16.00") P.C.



**rotork
gears**

IS18 GEARBOX
F25/FA25 INPUT F40/FA40 OUTPUT

APPROX WEIGHT 601.9 kg

DETAILS SUBJECT TO CHANGE WITHOUT PRIOR NOTICE

FOR UP TO DATE DETAILS VISIT www.rotork.com

DRAWING No	PUBIS18-F25-F40	9 Brown Lane West Holbeck Leeds LS12 6BH United Kingdom
ISSUE	B	
DATE	15/06/2011	