

RATIO	M.A.	C.O.G.			MAX. OUTPUT TORQUE Nm (lbs.ft)
		X	Y	Z	
15	13.650	0	95	352	43386 (32000)
24	21.680	0	93	356	43386 (32000)

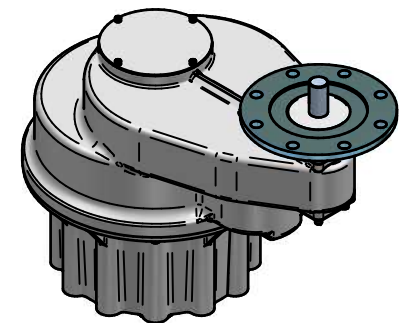
MAX BORE SQ KEY		
STD	BORE	KEY
BS4235	-	-
BS46	7.500"	1 1/8" SQ
ANSI B17.1	7.500"	1 3/4" SQ

MAX BORE RECTANGULAR KEY		
STD	BORE	KEY
BS4235	206.0	50 x 28
BS46	7.750"	2" x 1 3/8"
ANSI B17.1	7.750"	2" x 1 1/2"

MAX STEM SCREW ACCEPTANCE DIA	225 (8.750")
-------------------------------	--------------

INPUT FLANGE DETAILS					
ISO	FLANGE	SHAFT	RECESS	RECESS	HOLE DETAILS
	O/DIA. & THICKNESS	DIA.	DIA.	DEPTH	22.5° (OFF CENTRES)
F35	Ø415 x 20	Ø50.00-0.05	Ø260.10+0.05	6	8 HOLES Ø31.0 (Ø1.22")
	(Ø16.34" x 0.79")	(Ø1.969"-0.002")	(Ø10.240"+0.002")	(0.24")	ON Ø356.0 (Ø14.02") P.C (0.55"x0.35"x3.15")
FA35	Ø418 x 20	Ø50.00-0.05	Ø216.10+0.05	6	8 HOLES Ø23.0 (Ø0.91")
	(Ø16.46" x 0.79")	(Ø1.969"-0.002")	(Ø8.508"+0.002")	(0.24")	ON Ø356.0 (Ø14.02") P.C (0.55"x0.35"x3.15")

BASEPLATE DETAILS		
ISO	SPIGOT DIA.	HOLE DETAILS (15° OFF CENTRES)
	F48	Ø369.95-0.05
(Ø14.565"-0.002")		ON Ø483.0 (Ø19.02") P.C
FA48	Ø368.20-0.15	12 HOLES 1.25"UNCx45 (1.77") DEEP
	(Ø14.496"-0.006")	ON Ø482.6 (Ø19.00") P.C



**rotork  
gears**

IS20 GEARBOX  
F35/FA35 INPUT F48/FA48 OUTPUT

DETAILS SUBJECT TO CHANGE WITHOUT PRIOR NOTICE

FOR UP TO DATE DETAILS VISIT [www.rotork.com](http://www.rotork.com)

APPROX WEIGHT 826.8 kg

DRAWING No	PUBIS20-F35-F48	9 Brown Lane West Holbeck Leeds LS12 6BH United Kingdom
ISSUE	B	
DATE	18/07/2012	