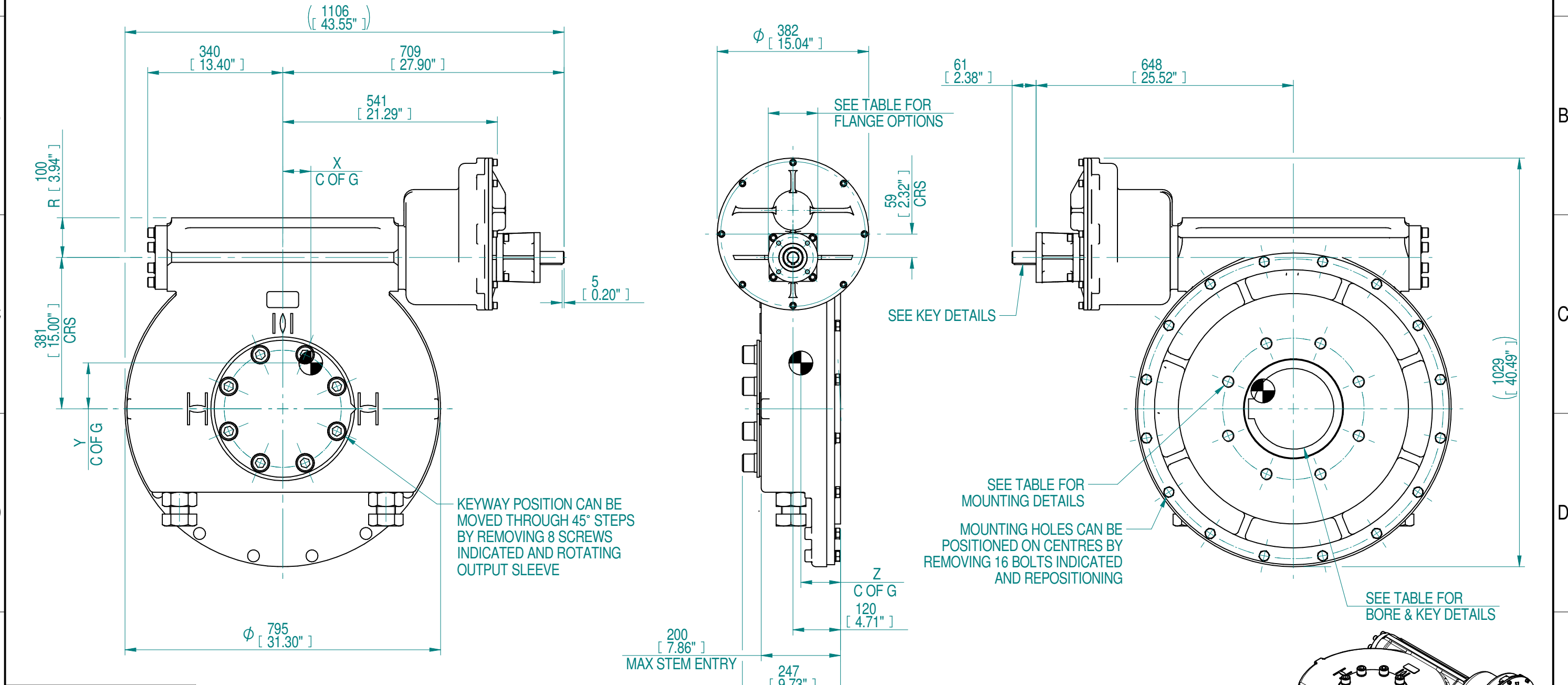
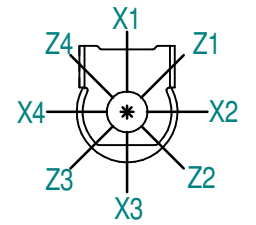


1	2		3		4		5		6		7		8				
INPUT FLANGE DETAILS					MOUNTING HOLES - BOLT CIRCLE (OFF CENTRES)					STEM ACCEPTANCE IN ACCORDANCE TO STANDARD							
INPUT FLANGE	FLANGE O/DIA.	SHAFT DIA.	RECESS DIA.	RECESS DEPTH	HOLE DETAILS (OFF CENTRES)	KEY DETAILS	ISO 5211 / MSS SP-101 MOUNTING OPTION	HOLE DETAILS (OFF CENTRES)	MAX OUTSIDE DIA. INCLUDING DRILLED HOLES	MIN INSIDE DIA. INCLUDING DRILLED HOLES	SQ BORE MAX	STANDARD	MIN BORE	SQ KEY MAX BORE	SQ KEY SIZE	RECT. KEY MAX BORE	RECT KEY SIZE
ISO F10	Ø125 x 15 (Ø4.92" x 0.59")	Ø30.00-0.05 (Ø1.18"-0.002")	Ø70.05+0.15 (Ø2.758"+0.006")	4 (0.16")	4 x Ø10.5 ON Ø102.0 P.C. (4 x Ø0.41" ON Ø4.02" P.C.)	8x7x55 (0.31"x0.27"x2.16")	ISO F35*	8 x M30 x 36 (1.42") DEEP ON Ø356.0 (Ø14.02") P.C.	Ø544 (21.42")	Ø291 (11.46")	□ 152.6 (6.00")	BS4235	-	-	-	203	50 x 28
FA10			Ø58.70+0.15 (Ø2.311"+0.006")				8 x 1" UNC x 36 (1.42") DEEP ON Ø355.6 (Ø14.00") P.C.	ANSI B17.1				-	7.375"	1 3/4" SQ.	7.625"	2" x 1 1/2"	
												DIN 6885	-	-	-	203	50 x 28

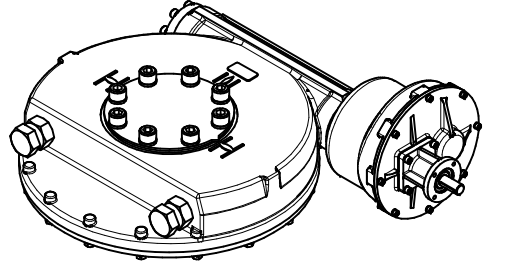


PLAN VIEW OF GEARBOX IN CLOSED POSITION SHOWING STANDARD KEYWAY POSITIONS. ALTERNATIVES AVAILABLE ON REQUEST



896	224	288	502	108464	376	71	115	100
657	164	211			513			
438	110	141			770			
299	75	96			1129			
219	55	70			1539			
RATIO	TURNS TO CLOSE	M.A. (±10%)	WEIGHT (KG)	MAX OUTPUT (Nm)	MAX INPUT (Nm)	X	Y	Z
DESCRIPTION			TORQUE			CENTRE OF GRAVITY		

- NOTES:
- OTHER INPUT AND OUTPUT OPTIONS AVAILABLE - SEE 'IW GEARBOX BROCHURE' AT WWW.ROTORK.COM FOR FURTHER DETAILS.
  - CENTRE OF GRAVITY POSITION IS INDICATIVE FOR STANDARD BUILD WHEN IN POSITION SHOWN.
  - \* THREAD DEPTH DOES NOT MATCH ISO STANDARD.
  - WEIGHT AND C OF G DIMENSIONS WILL VARY +/-1% DEPENDING ON RATIO.



1:20

AS PART OF CONTINUOUS PRODUCT DEVELOPMENT, ALL DETAILS SUBJECT TO CHANGE WITHOUT PRIOR NOTICE. FOR UP TO DATE DETAILS PLEASE VISIT [www.rotork.com](http://www.rotork.com)

<p>©2019 Rotork Group of Companies. All rights reserved. This document and its contents may not be reproduced, distributed, transmitted, displayed, published, or broadcast, in whole, or in part, without the prior, express written permission of Rotork Group of Companies.</p> <p>Leeds - UK</p> <p><a href="http://www.rotork.com">www.rotork.com</a></p>	<p>Dimensions in mm</p> <p>Scale 1:10</p>	<p>Title <b>IW11 IR3 -1 QUARTER TURN GEARBOX</b></p>		
	<p>Created S.Monish</p> <p>Checked V.G.Balaji</p> <p>Approved J.Dickinson</p>	<p>2019-10-10</p> <p>2019-10-15</p> <p>2019-11-12</p>	<p>Drawing Number</p> <p><b>PUB-IW11-IR3-1</b></p>	<p>Rev</p> <p>0-1</p>
	<p>Nominal Mass <b>SEE TABLE</b> Size A3 Sheet 1 of 1</p>			

Rev	ECN	Revised	Rev. Approved	Date	Change Description
0-1		J.Dickinson	J.Dickinson	2019-11-12	Add bolt circle