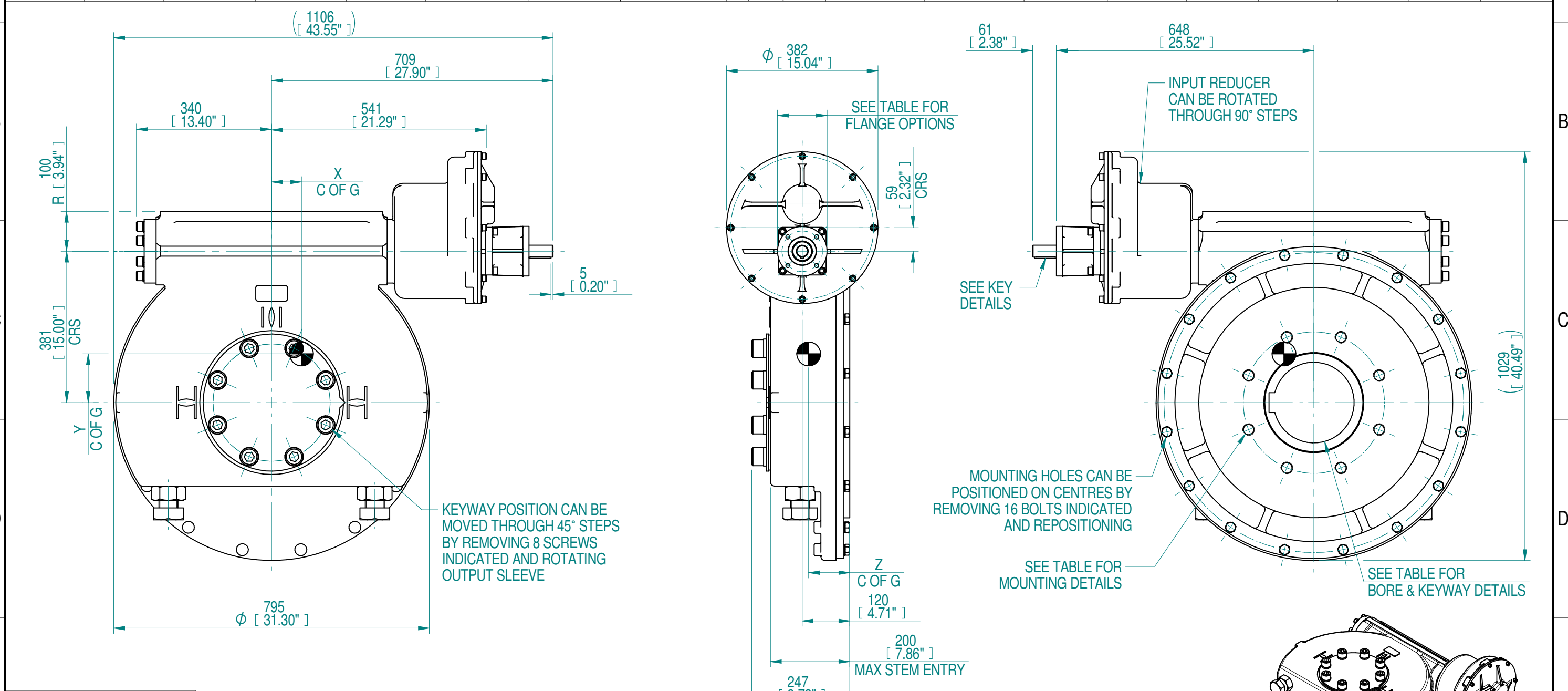
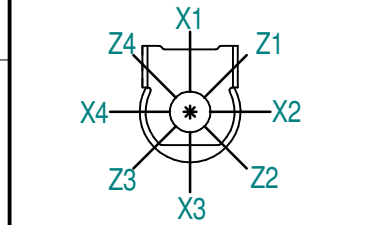


1	2		3		4		5		6		7		8				
INPUT FLANGE DETAILS					MOUNTING HOLES - BOLT CIRCLE (OFF CENTRES)					STEM ACCEPTANCE IN ACCORDANCE TO STANDARD							
INPUT FLANGE	FLANGE O/DIA.	SHAFT DIA.	RECESS DIA.	RECESS DEPTH	HOLE DETAILS (OFF CENTRES)	KEY DETAILS	ISO 5211 / MSS SP-101 MOUNTING OPTION	HOLE DETAILS (OFF CENTRES)	MAX OUTSIDE DIA. INCLUDING DRILLED HOLES	MIN INSIDE DIA. INCLUDING DRILLED HOLES	SQ BORE MAX	STANDARD	MIN BORE	SQ KEY MAX BORE	SQ KEY SIZE	RECT. KEY MAX BORE	RECT KEY SIZE
ISO F10	Ø125 x 15 (Ø4.92" x 0.591")	Ø30.00-0.05 (Ø1.181"-0.002")	Ø70.05+0.15 (Ø2.758"+0.006")	4 (0.16")	4 x Ø10.5 ON Ø102.0 P.C. (4 x Ø0.41" ON Ø4.02" P.C.)	8x7x55 (0.31"x0.27"x2.16")	ISO F35*	8 x M30 x 36 (1.42") DEEP ON Ø356.0 (Ø14.02") P.C.	Ø544 (21.42")	Ø291 (11.46")	□ 152.6 (6.00")	BS4235	-	-	-	203	50 x 28
FA10			FA35*				8 x 1" UNC x 36 (1.42") DEEP ON Ø355.6 (Ø14.00") P.C.	ANSI B17.1				-	7.375"	1 3/4" SQ.	7.625"	2" x 1 1/2"	
			Ø58.70+0.15 (Ø2.311"+0.006")									DIN 6885	-	-	-	203	50 x 28



PLAN VIEW OF GEARBOX IN CLOSED POSITION SHOWING STANDARD KEYWAY POSITIONS. ALTERNATIVES AVAILABLE ON REQUEST



1093	273	352	487	141000	401	75	122	104
919	230	296			477			
785	196	253			558			
680	170	219			644			
595	149	191			737			
439	110	141			998			
RATIO	TURNS TO CLOSE	M.A. (±10%)	WEIGHT (KG)	MAX OUTPUT (Nm)	MAX INPUT (Nm)	X	Y	Z
DESCRIPTION			TORQUE			CENTRE OF GRAVITY		

- NOTES:
- OTHER INPUT AND OUTPUT OPTIONS AVAILABLE - SEE 'IW GEARBOX BROCHURE' AT WWW.ROTORK.COM FOR FURTHER DETAILS.
 - * THREAD DEPTH DOES NOT MATCH ISO STANDARD.
 - CENTRE OF GRAVITY POSITION IS INDICATIVE FOR STANDARD BUILD WHEN IN POSITION SHOWN.
 - WEIGHT AND C OF G DIMENSIONS WILL VARY +/-1% DEPENDING ON RATIO.

1:20

AS PART OF CONTINUOUS PRODUCT DEVELOPMENT, ALL DETAILS SUBJECT TO CHANGE WITHOUT PRIOR NOTICE. FOR UP TO DATE DETAILS PLEASE VISIT www.rotork.com

<p>©2019 Rotork Group of Companies. All rights reserved. This document and its contents may not be reproduced, distributed, transmitted, displayed, published, or broadcast, in whole, or in part, without the prior, express written permission of Rotork Group of Companies.</p> <p>Leeds - UK</p> <p>www.rotork.com</p>	<p>Dimensions in mm</p> <p>Scale 1:10</p>	<p>Title IW116 IR35 QUARTER TURN GEARBOX</p>	
	<p>Created S.Monish 2019-10-11</p> <p>Checked V.G.Balaji 2019-10-15</p> <p>Approved J.Dickinson 2019-11-12</p>	<p>Drawing Number PUB-IW116-IR35</p> <p>Rev 0-0</p>	
	<p>Nominal Mass SEE TABLE</p> <p>Size A3</p> <p>Sheet 1 of 1</p>		