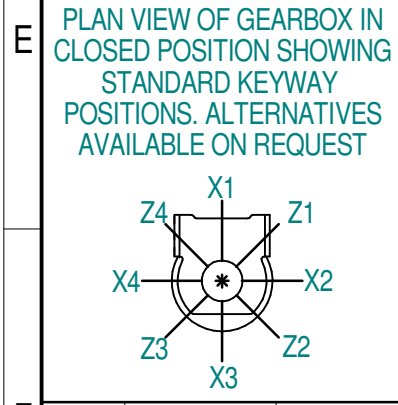
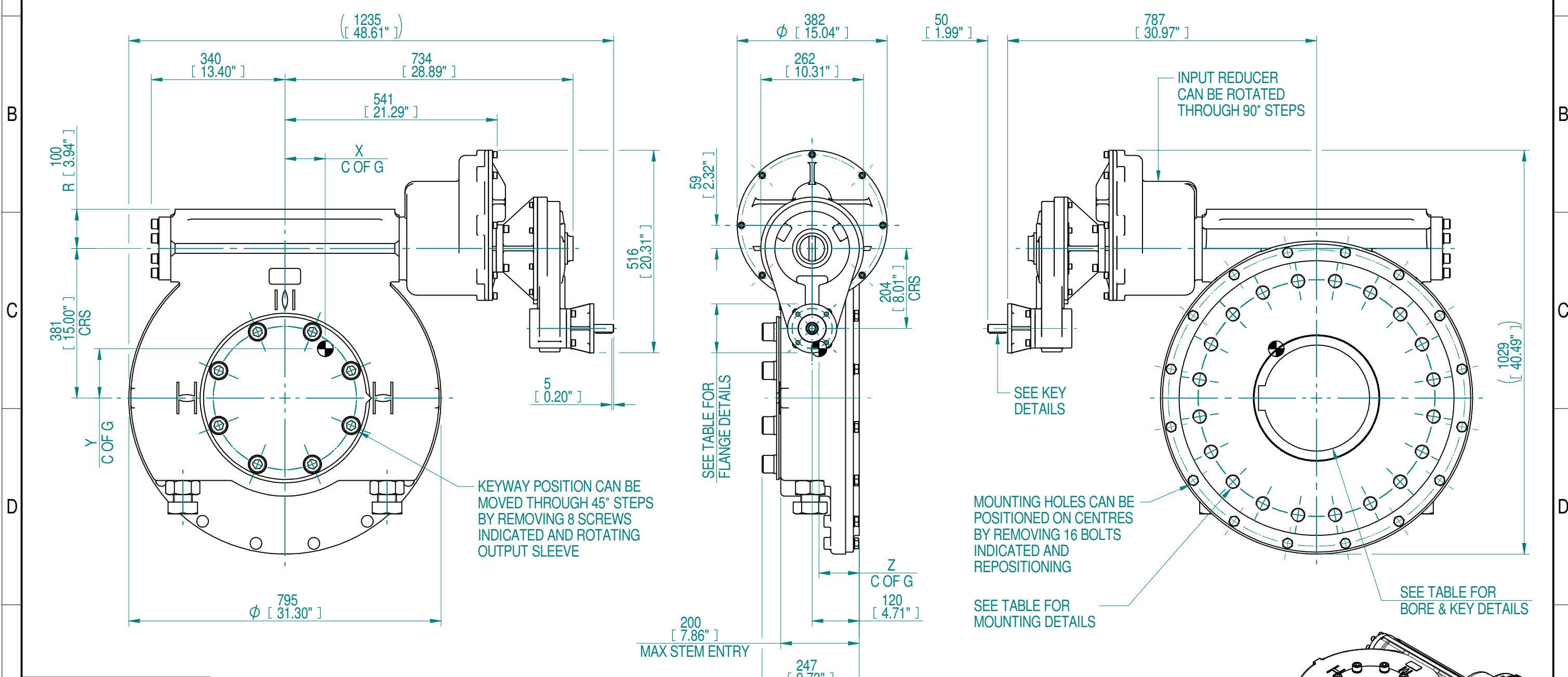


INPUT FLANGE DETAILS			MOUNTING HOLES - BOLT CIRCLE (OFF CENTRES)					STEM ACCEPTANCE IN ACCORDANCE TO STANDARD									
INPUT FLANGE	FLANGE O/DIA.	SHAFT DIA.	RECESS DIA.	RECESS DEPTH	HOLE DETAILS (OFF CENTRES)	KEY DETAILS	ISO 5211 / MSS SP-101 MOUNTING OPTION	HOLE DETAILS (OFF CENTRES)	MAX OUTSIDE DIA. INCLUDING DRILLED HOLES	MIN INSIDE DIA. INCLUDING DRILLED HOLES	SQ BORE MAX	STANDARD	MIN BORE	SQ KEY MAX BORE	SQ KEY SIZE	RECT. KEY MAX BORE	RECT KEY SIZE
ISO F10	Ø125 x 20 (Ø4.92" x 0.787")	Ø20.00-0.05 (Ø0.787"-0.002")	Ø70.05+0.15 (Ø2.758"+0.006")	4 (0.16")	4 x Ø10.5 ON Ø102.0 P.C. (4 x Ø0.41" ON Ø4.02" P.C.)	6x6x40 (0.24"x0.24"x1.57")	ISO F60*	20 x M36 x 36 (1.42") DEEP ON Ø603 (Ø23.74") P.C.	Ø660 (25.98")	Ø361 (14.2")	□ 189.5 (7.46")	BS4235	-	-	-	270.0	63 x 32
FA10			FA60*				20 x 1.25 UNC x 36 (1.42") DEEP ON Ø603 (Ø23.74") P.C.					ANSI B17.1	-	9.4"	2 1/2" SQ.	10.125"	2 1/2" x 1 3/4"
			Ø58.70+0.15 (Ø2.311"+0.006")									DIN 6885	-	-	-	270.0	63 x 32



RATIO	TURNS TO CLOSE	M.A. (±10%)	WEIGHT (KG)	MAX OUTPUT (Nm)	MAX INPUT (Nm)	X	Y	Z
6560	1640	2005	558	141000	103	126	102	70
5513	1379	1685						84
4483	1121	1370						103
3767	942	1152						122
3220	805	984						143
2788	697	852						165
2315	579	708						199
1946	487	595						237
1663	416	508						277
1440	360	440						320

NOTES:

- OTHER INPUT AND OUTPUT OPTIONS AVAILABLE - SEE 'IW GEARBOX BROCHURE' AT WWW.ROTORK.COM FOR FURTHER DETAILS.
- \* THREAD DEPTH DOES NOT MATCH ISO STANDARD.
- CENTRE OF GRAVITY POSITION IS INDICATIVE FOR STANDARD BUILD WHEN IN POSITION SHOWN.
- WEIGHT AND C OF G DIMENSIONS WILL VARY +/-1% DEPENDING ON RATIO.

AS PART OF CONTINUOUS PRODUCT DEVELOPMENT, ALL DETAILS SUBJECT TO CHANGE WITHOUT PRIOR NOTICE. FOR UP TO DATE DETAILS PLEASE VISIT [www.rotork.com](http://www.rotork.com)

Scale: 1:20

Rev	ECN	Revised	Rev. Approved	Date	Change Description
0-1		J.Dickinson	J.Dickinson	2019-11-13	Include secondary dimensions

**rotork** Gears  
Leeds - UK  
[www.rotork.com](http://www.rotork.com)

©2019 Rotork Group of Companies. All rights reserved. This document and its contents may not be reproduced, distributed, transmitted, displayed, published, or broadcast, in whole, or in part, without the prior, express written permission of Rotork Group of Companies.

Dimensions in mm  
Scale: 1:10

Title: **IW116 IR3.5 AS5 QUARTER TURN GEARBOX**

Created: M.Jones, 2019-08-02  
Checked: J.Dickinson, 2019-09-04  
Approved: J.Dickinson, 2019-09-04

Drawing Number: **PUB-IW116-IR35-AS5**  
Rev: 0-1

Nominal Mass: **SEE TABLE**  
Size: A3  
Sheet: 1 of 1