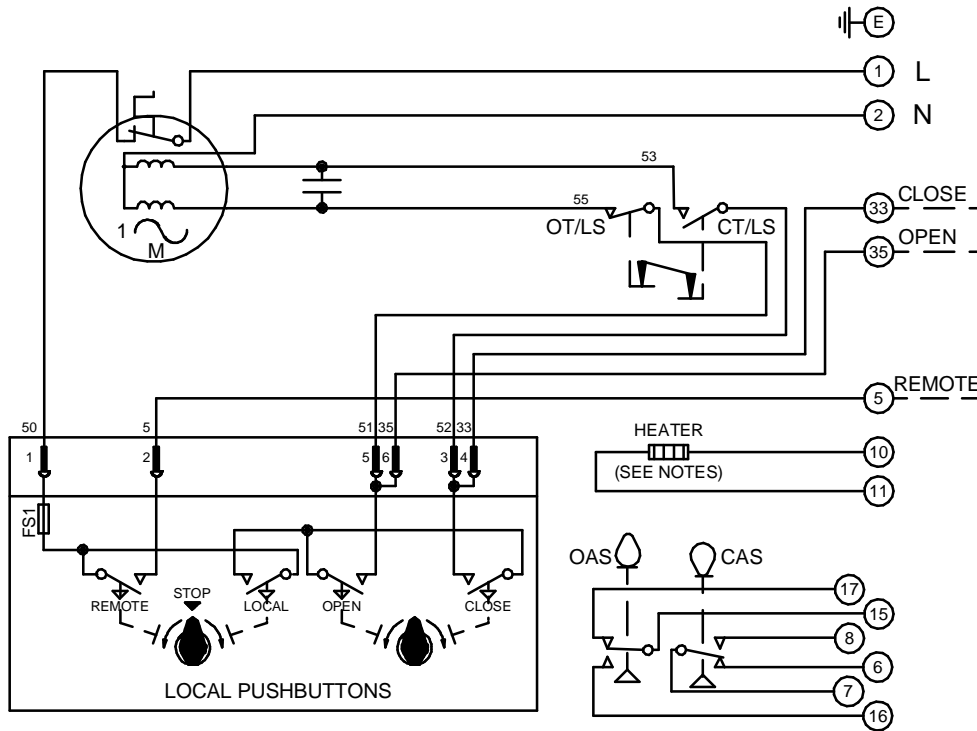


CIRCUIT IS DRAWN FOR A VALVE IN THE FULLY CLOSED POSITION

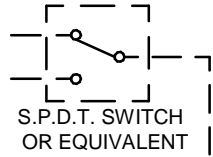
CIRCUIT IS DRAWN FOR A VALVE IN THE FULLY CLOSED POSITION

Circuit Diagram No - Issue No

2P30Q00 - 04



WARNING
IT IS ESSENTIAL THAT REMOTE CONTROL CIRCUITS ARE DESIGNED SO THAT AN OPEN AND A CLOSE SIGNAL CAN NEVER BE APPLIED SIMULTANEOUSLY.



OT/LS - OPEN TORQUE/LIMIT SWITCH.
CT/LS - CLOSE TORQUE/LIMIT SWITCH.
OAS - OPEN AUXILIARY SWITCH.
CAS - CLOSE AUXILIARY SWITCH.

WIRES ARE IDENTIFIED AT EACH END BY TERMINAL NUMBER OR NUMBER SHOWN.

ALLOW MINIMUM 2 SECOND DELAY WHEN CONTROL SIGNALS ARE REVERSED TO ENSURE MOTOR REVERSAL.

FS1 - 6.3A
12W (MAX) HEATER FITTED AS STANDARD.
UNLESS OTHERWISE REQUESTED, HEATERS FITTED WILL BE :
120V (2K OHM) OR 240V (5.62K OHM).

Iss	Date	Chkd	Revision Details
02	190292	T.W	WARNING NOTE ADDED. CHECKED K.S 190292
03	260417	JS	PAK TERMINAL BUNG INTRODUCED FOR WTC APPLICATION EC7024.
04	240220	JS	Q GLOBAL CERTIFICATION CHANGE EC8618.

www.rotork.com

ROTORK CONTROLS LTD
BATH, BA1 3JQ
ENGLAND
Tel:01225-733200

ROTORK CONTROLS INC
ROCHESTER
NY 14624, USA
Tel:585-247-2304

Q - STANDARD + PUSHBUTTONS + HEATER	Drawn by: K.S Date : 020490 Base WD: 2P30Q00 Job No : --- MI No : .	Circuit Diagram No 2P30Q00	Issue No 4
-------------------------------------	---	--------------------------------------	----------------------