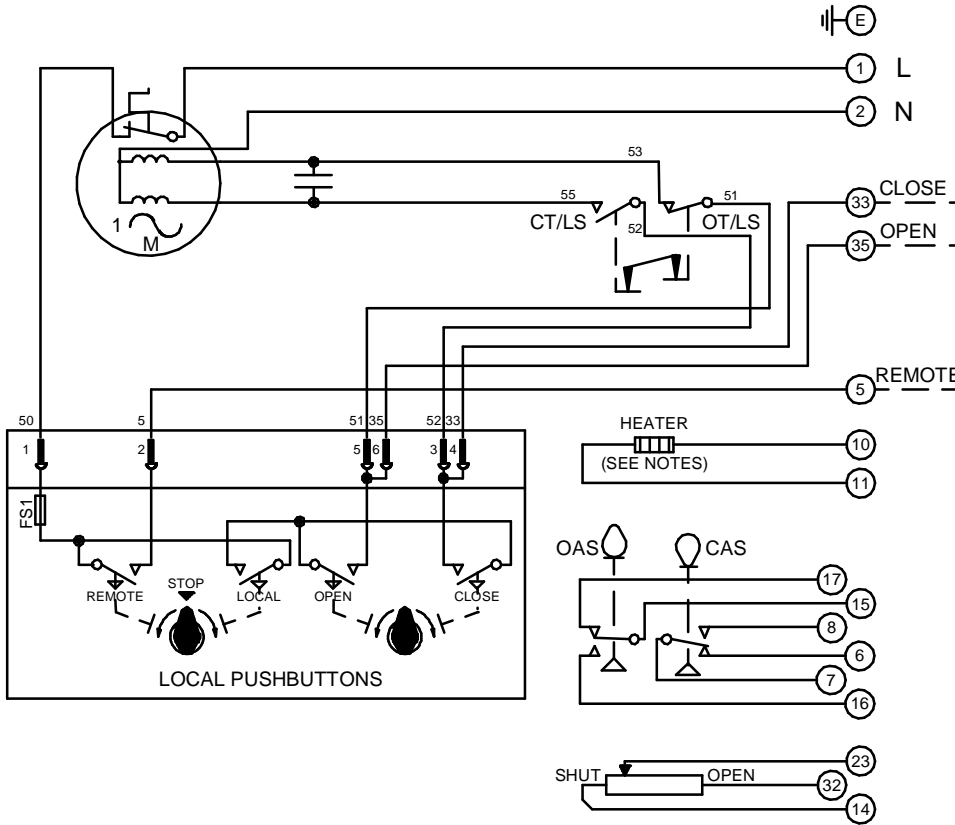


CIRCUIT IS DRAWN FOR A VALVE IN THE FULLY CLOSED POSITION

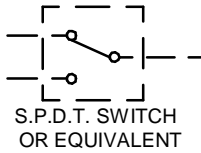
CIRCUIT IS DRAWN FOR A VALVE IN THE FULLY CLOSED POSITION

Circuit Diagram No - Issue No

2P32Q00A - 04



WARNING
IT IS ESSENTIAL THAT REMOTE CONTROL CIRCUITS ARE DESIGNED SO THAT AN OPEN AND A CLOSE SIGNAL CAN NEVER BE APPLIED SIMULTANEOUSLY.



OT/LS - OPEN TORQUE/LIMIT SWITCH.
CT/LS - CLOSE TORQUE/LIMIT SWITCH.
OAS - OPEN AUXILIARY SWITCH.
CAS - CLOSE AUXILIARY SWITCH.

WIRES ARE IDENTIFIED AT EACH END BY TERMINAL NUMBER OR NUMBER SHOWN.

ALLOW MINIMUM 2 SECOND DELAY WHEN CONTROL SIGNALS ARE REVERSED TO ENSURE MOTOR REVERSAL.

FS1 - 6.3A
12W (MAX) HEATER FITTED AS STANDARD.
UNLESS OTHERWISE REQUESTED, HEATERS FITTED WILL BE :
120V (2K OHM) OR 240V (5.62K OHM).

Iss	Date	Chkd	Revision Details
02		PGS	SIMILAR TO 2P32Q00A JOB NO ----
03	260417	JS	PAK TERMINAL BUNG INTRODUCED FOR WTC APPLICATION EC7024.
04	240220	JS	Q GLOBAL CERTIFICATION CHANGE EC8618.

www.rotork.com

ROTORK CONTROLS LTD
BATH, BA1 3JQ
ENGLAND
Tel:01225-733200

ROTORK CONTROLS INC
ROCHESTER
NY 14624, USA
Tel:585-247-2304

Q - STANDARD + PUSHBUTTONS + HEATER + POTENTIOMETER.	Drawn by: K.S Date : 300390 Base WD: 2P32Q00A Job No : --- MI No : .	Circuit Diagram No 2P32Q00A	Issue No 4
--	--	---------------------------------------	----------------------