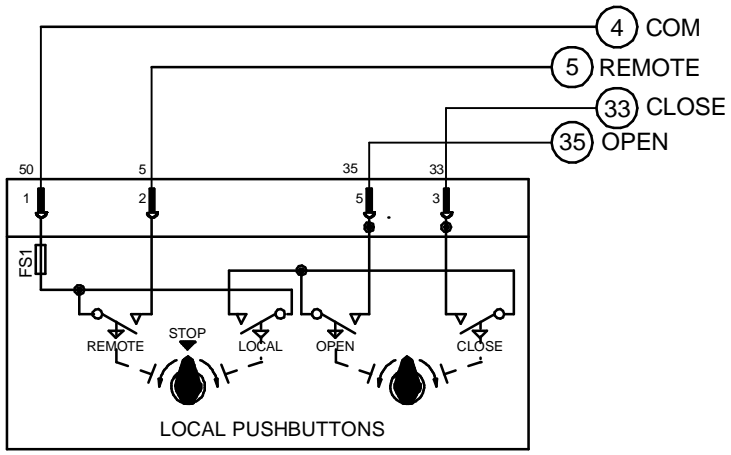
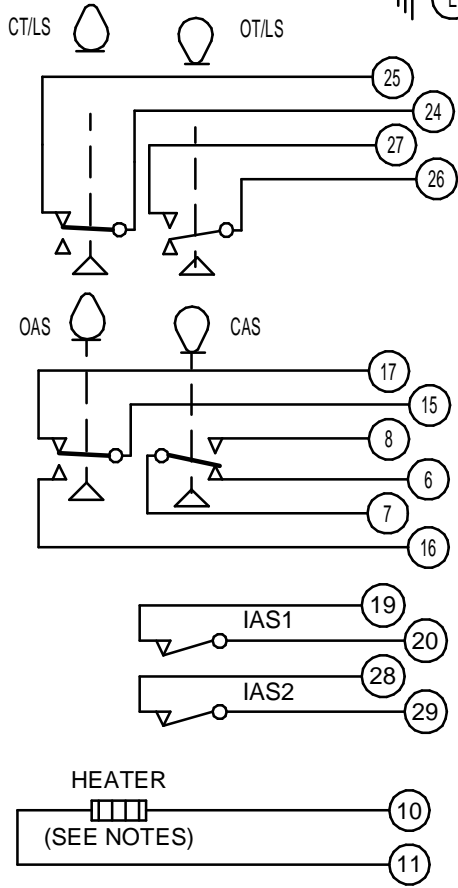
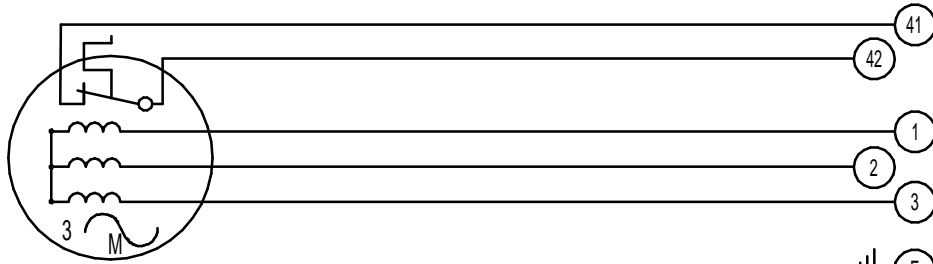


CIRCUIT IS DRAWN FOR A VALVE IN THE FULLY CLOSED POSITION

CIRCUIT IS DRAWN FOR A VALVE IN THE FULLY CLOSED POSITION



Circuit Diagram No - Issue No  
**5P35Q00A - 1**

THERMOSTAT

3 PHASE SUPPLY

OT/LS - OPEN TORQUE/LIMIT SWITCH.  
CT/LS - CLOSE TORQUE/LIMIT SWITCH.  
OAS - OPEN AUXILIARY SWITCH.  
CAS - CLOSE AUXILIARY SWITCH.  
  
IAS1 & 2 - INTERMEDIATE AUXILIARY SWITCHES ADJUSTABLE TO MAKE OR BREAK INDIVIDUALLY AT ANY POSITION.

WIRES ARE IDENTIFIED AT EACH END BY TERMINAL NUMBER OR NUMBER SHOWN.  
  
ALLOW MINIMUM 2 SECOND DELAY WHEN CONTROL SIGNALS ARE REVERSED TO ENSURE MOTOR REVERSAL.

**WARNING**  
IT IS ESSENTIAL THAT REMOTE CONTROL CIRCUITS ARE DESIGNED SO THAT AN OPEN AND A CLOSE SIGNAL CAN NEVER BE APPLIED SIMULTANEOUSLY.

12W (MAX) HEATER FITTED AS STANDARD. UNLESS OTHERWISE REQUESTED, HEATERS FITTED WILL BE : 240V (5.62K OHM).

TERMINAL BUNG

Iss	Date	Chkd	Revision Details
01	130418	JS	FIRST PRODUCTION ISSUE

**www.rotork.com**  
ROTORK CONTROLS (INDIA) PRIVATE LTD  
28B, AMBATTUR INDUSTRIAL ESTATE (NORTH),  
AMBATTUR, CHENNAI - 600 098 INDIA.  
Tel:044-39555600

Q - 3 PHASE + PUSH BUTTON + INTERMEDIATE SWITCHES + HEATER					
Drawn by: JS Date : 130418 Base WD: 5S00Q00 Job No : --- MI No : .	<table border="1"> <tr> <th>Circuit Diagram No</th> <th>Issue No</th> </tr> <tr> <td><b>5P35Q00A</b></td> <td><b>1</b></td> </tr> </table>	Circuit Diagram No	Issue No	<b>5P35Q00A</b>	<b>1</b>
Circuit Diagram No	Issue No				
<b>5P35Q00A</b>	<b>1</b>				