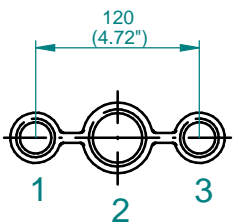


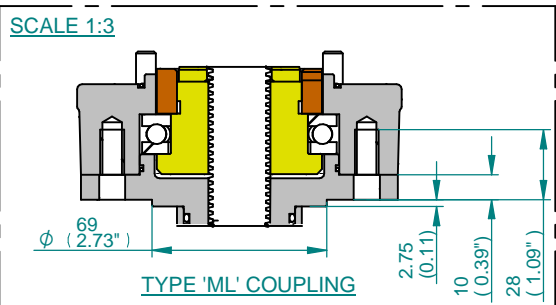
**CONDUIT ENTRIES**



DEFAULT HOLE SIZES:  
HOLES 1 & 3 TAPPED M25  
HOLE 2 TAPPED M40

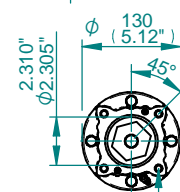
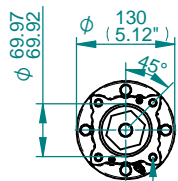
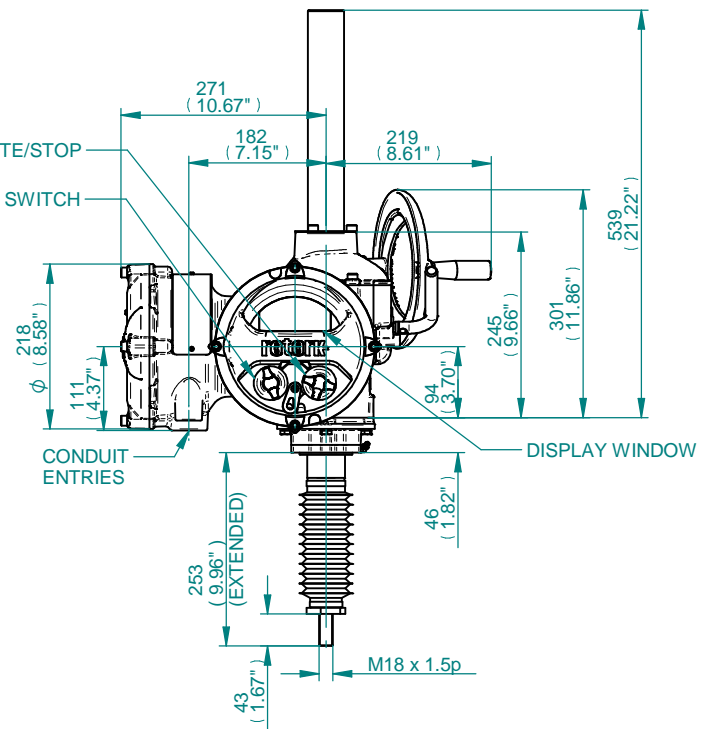
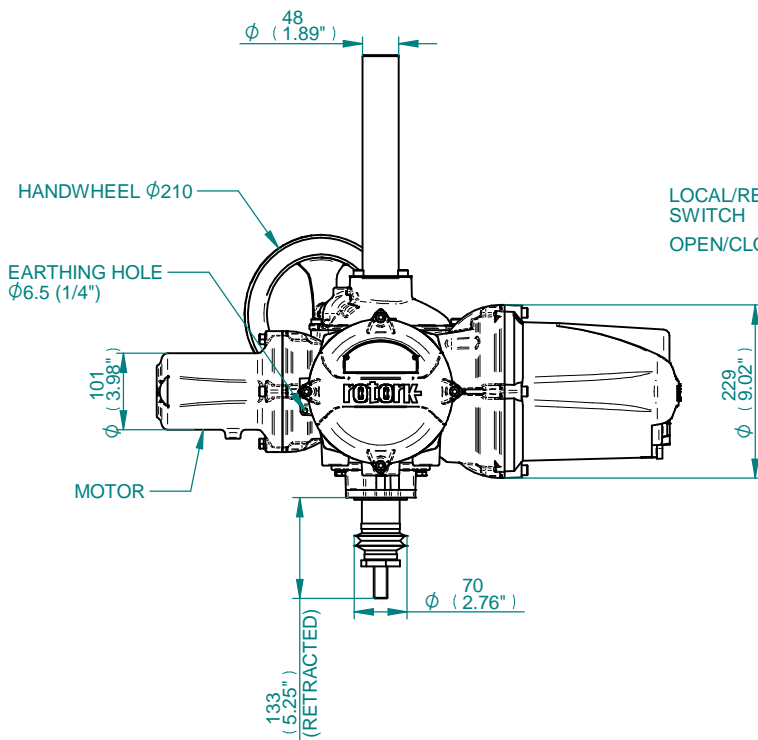
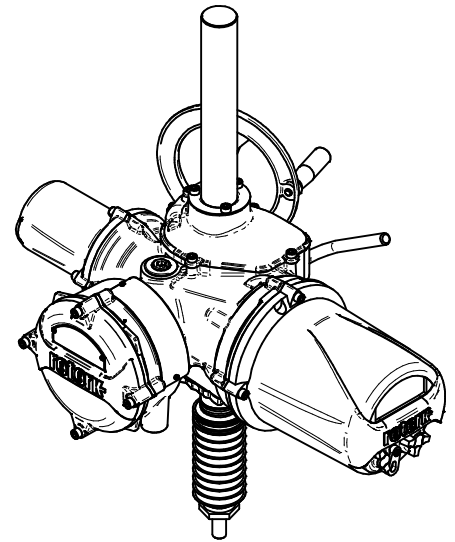
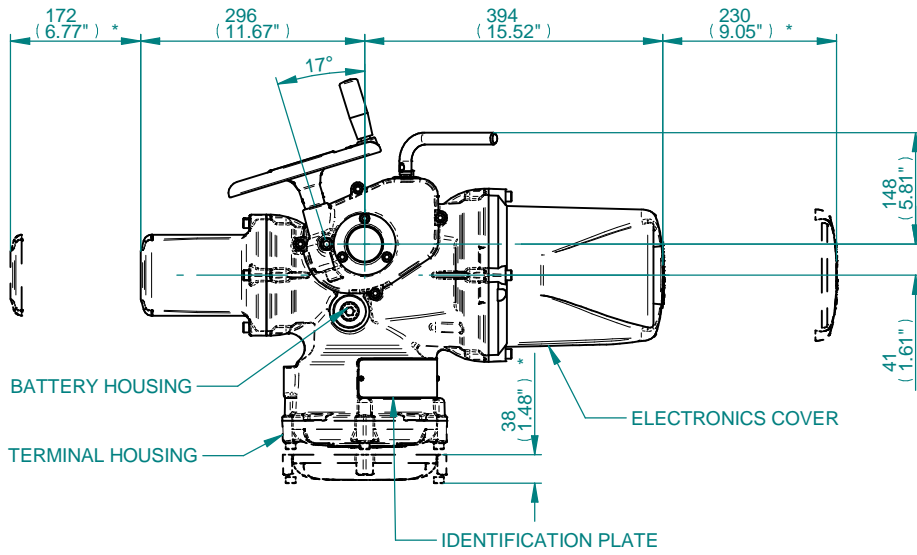
**F10 BASE DETAILS**

**FA10 BASE DETAILS**

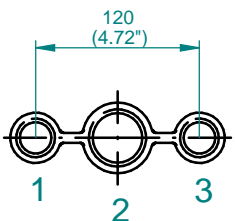


**NOTES**

1. STANDARD 120mm STROKE SHOWN
2. \* REMOVAL ALLOWANCE REQUIRED



CONDUIT ENTRIES

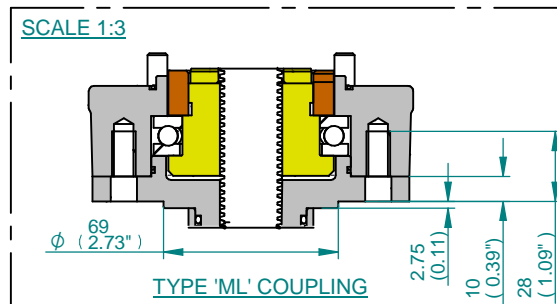


DEFAULT HOLE SIZES:  
 HOLES 1 & 3 TAPPED M25  
 HOLE 2 TAPPED M40

4 HOLES M10x1.5p  
 EQUI-SPACED AS SHOWN  
 ON A 102 PCD (ISO 5210 F10)

4 HOLES 3/8" UNC  
 EQUI-SPACED AS SHOWN  
 ON A 4" PCD (MSS SP-102 FA10)

SCALE 1:3



NOTES

1. STANDARD 120mm STROKE SHOWN
2. <sup>1</sup>\*1 REMOVAL ALLOWANCE REQUIRED