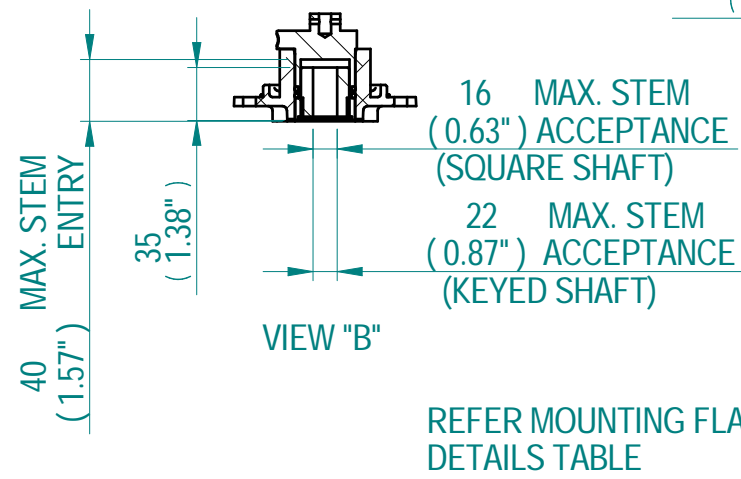
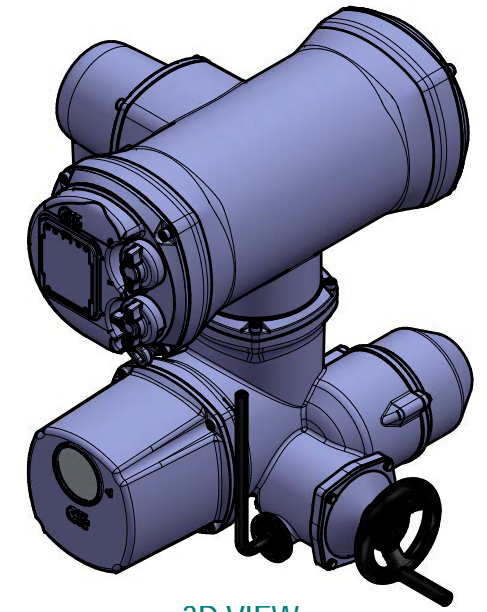
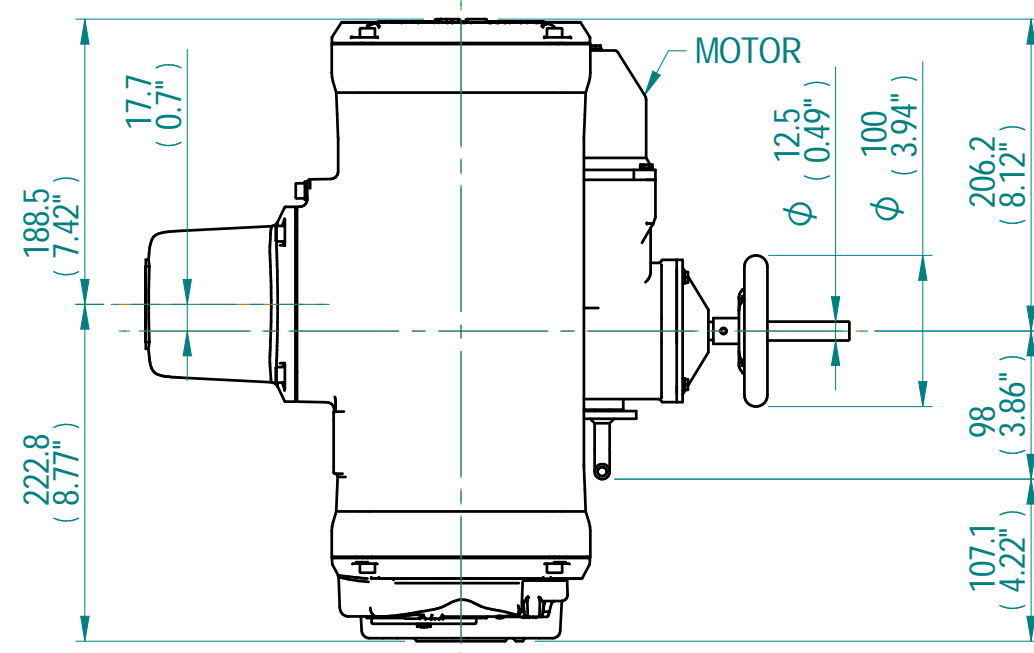
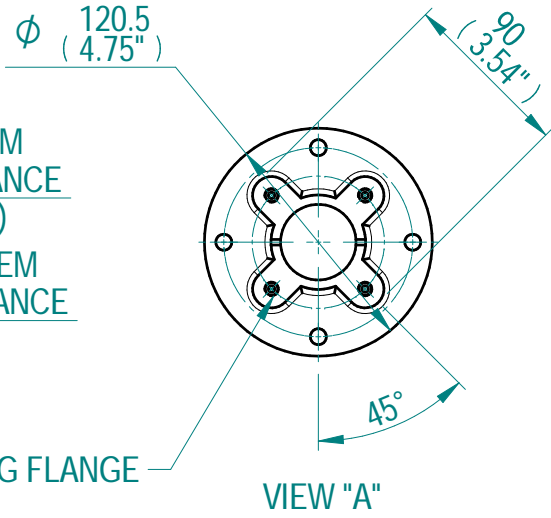


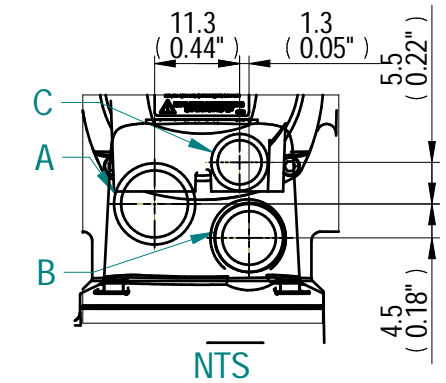
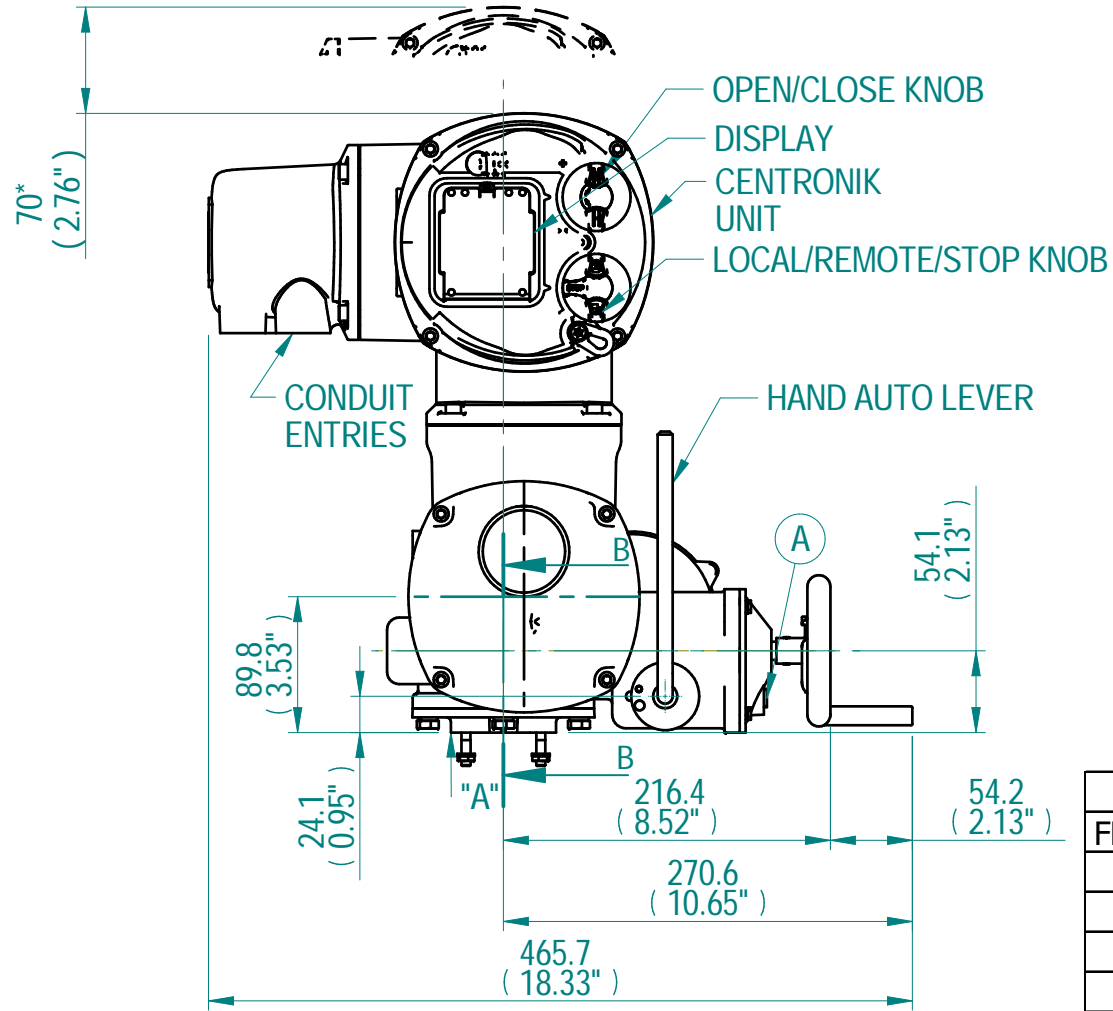
COUPLING DETAILS - F05/FA05 & F07/FA07



BASE DETAILS



3D VIEW



CONDUIT ENTRY HOLE		
Hole	Metric	NPT
A	M32	1-1/4"
B	M25	3/4"
C	M20	3/4"

MOUNTING FLANGE DETAILS		
FLANGE TYPE	PCD	DETAILS
F05	50	M6X10 DEEP
FA05	50	1/4"UNC X 10 DEEP
F07	70	M8X12 DEEP
FA07	70	5/16"UNC X 12 DEEP

- NOTES:**
1. DIMENSION WITH * INDICATE COVER REMOVAL ALLOWANCE
 2. APPROXIMATE WEIGHT OF THE ACTUATOR IS 22.5 KG
 3. ROTORK CANNOT BE HELD LIABLE FOR DAMAGE TO OUR EQUIPMENT CAUSED BY EXCESSIVE LOADING FROM HANDWHEEL & HAND LEVER
 4. (A) OIL FILTERS AND DRAIN PLUGS

©2022 Rotork Group of Companies. All rights reserved. This document and its contents may not be reproduced, distributed, transmitted, displayed, published, or broadcast, in whole, or in part, without the prior express written permission of Rotork Group of Companies.

Created: ALLEN MARSH. B 2021-04-29

Checked: SANTHAKUMARI. K 2021-04-29

Approved: ANAND BABU. D 2021-04-29

Dimensions in mm

Scale: 1:5

Title: **CKQ135 - CENTRONIK DIMENSIONAL DRAWING**

Drawing Number: **CKQ135-CENTRONIK**

Rev: 02

Rev	ECN	Revised	Rev. Approved	Date	Change Description
00		AM	DAB	2021-04-29	FIRST ISSUE

Template Issue - 2020-06-12 GK

