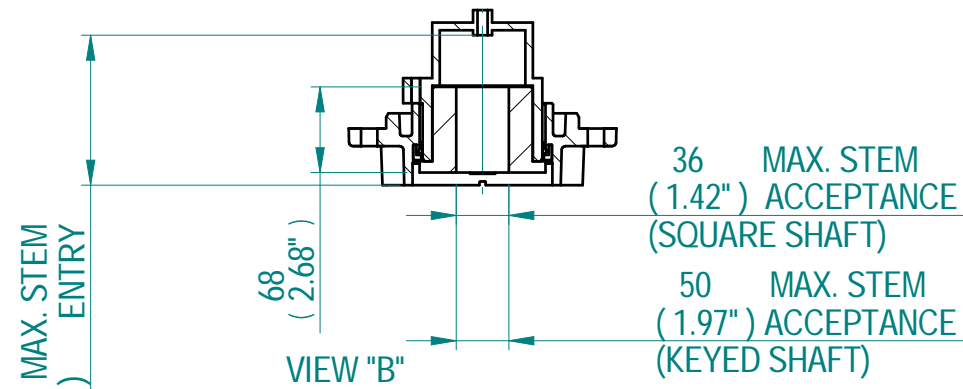
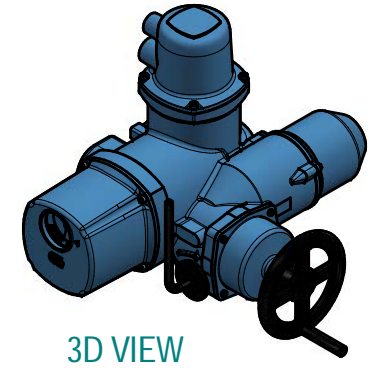
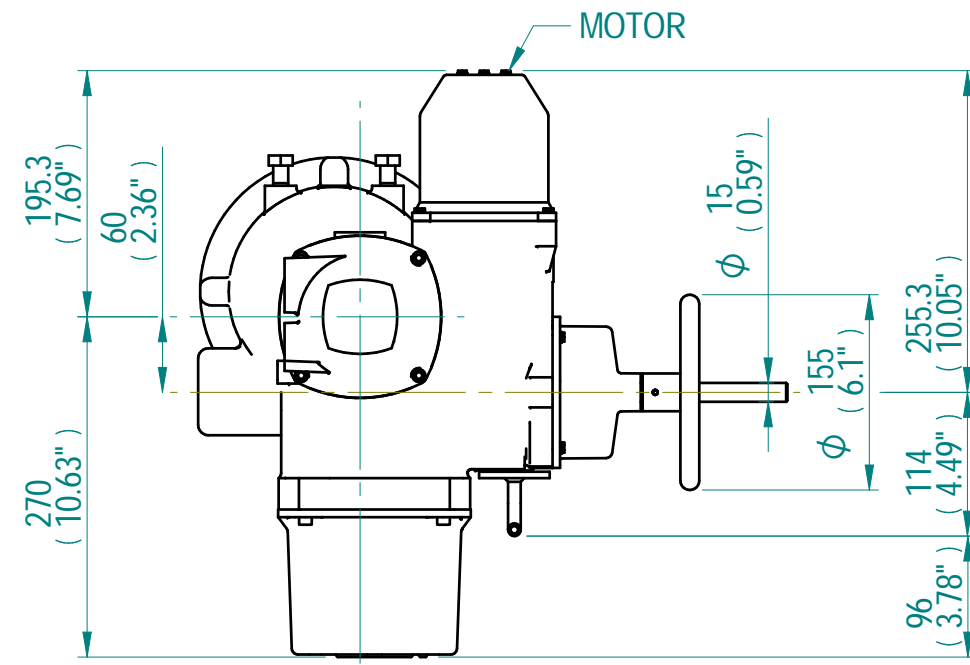
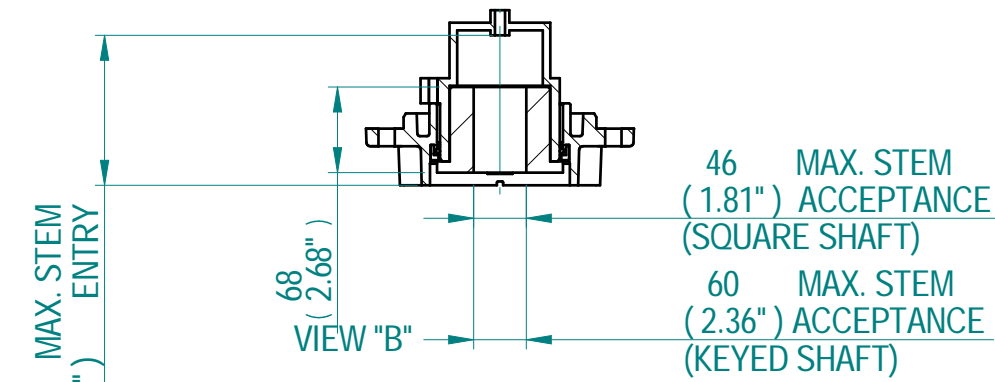


COUPLING DETAILS - F12/FA12

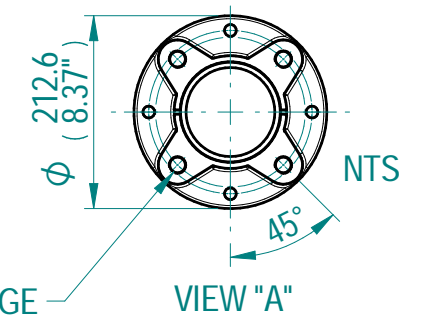


COUPLING DETAILS - F14/FA14 & F16/FA16

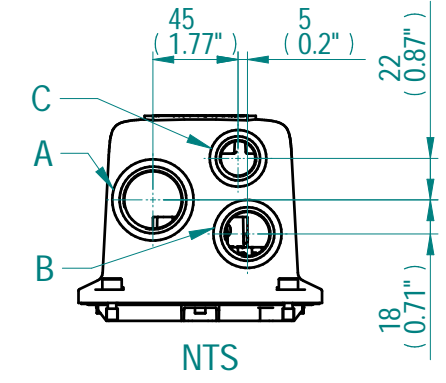


3D VIEW

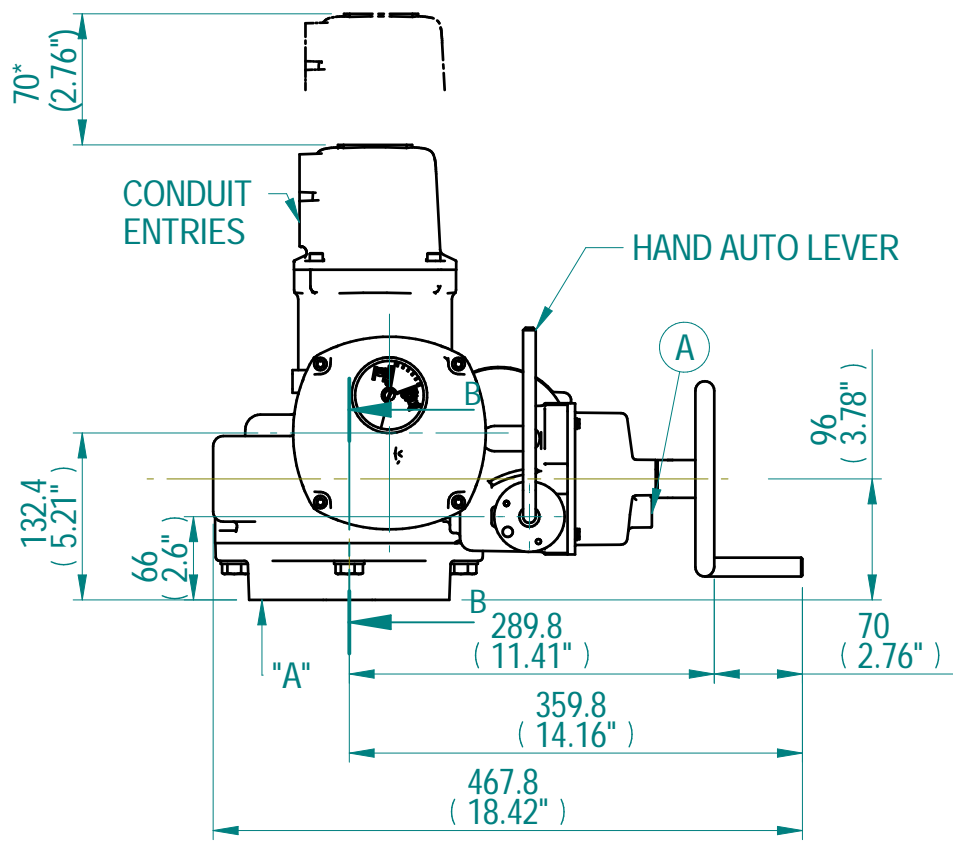
BASE DETAILS



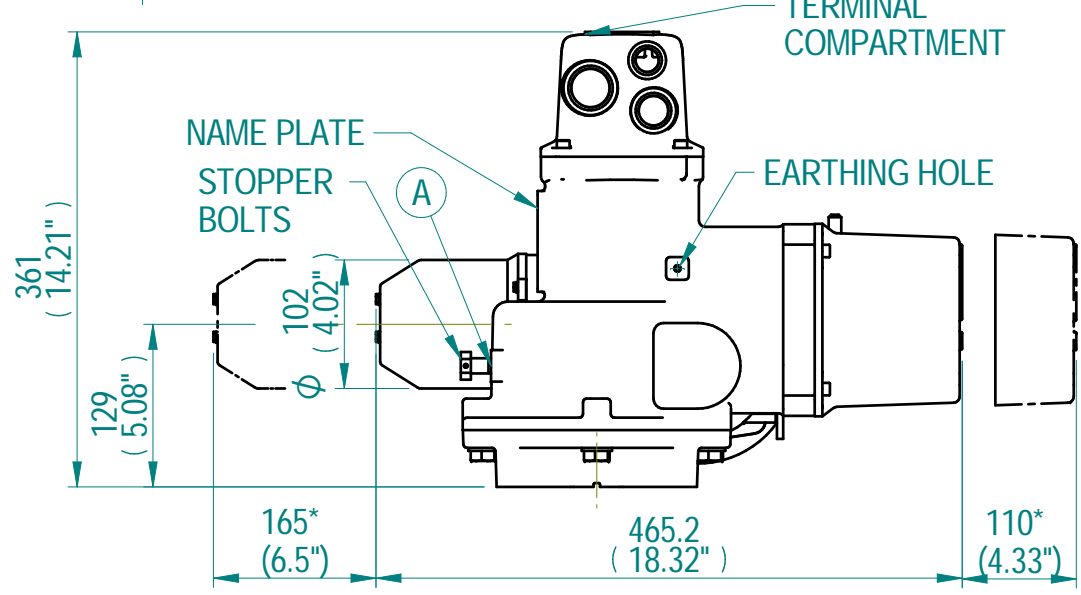
REFER MOUNTING FLANGE DETAILS TABLE



CONDUIT ENTRY HOLE		
Hole	Metric	NPT
A	M32	1-1/4"
B	M25	3/4"
C	M20	3/4"



MOUNTING FLANGE DETAILS		
FLANGE TYPE	PCD	DETAILS
F12	125	M12X18 DEEP
FA12	125	1/2"UNC X 18 DEEP
F14	140	M16X24 DEEP
FA14	140	5/8"UNC X 24 DEEP
F16	165	M20X30 DEEP
FA16	165	3/4"UNC X 30 DEEP



- NOTES:
1. APPROXIMATE WEIGHT OF THE ACTUATOR IS 27 KG
 2. ALL CONDUIT ENTRIES ARE PLUGGED WITH WEATHER PROOF PLUGS.
 3. ALL "O" RINGS ARE ASSEMBLED AFTER APPLYING GREASE
 4. (A) OIL FILTERS AND DRAIN PLUGS

<p>Chennai - India www.rotork.com</p>	©2022 Rotork Group of Companies. All rights reserved. This document and its contents may not be reproduced, distributed, transmitted, displayed, published, or broadcast, in whole, or in part, without the prior express written permission of Rotork Group of Companies.		Dimensions in mm Scale: 1:5	Title CKQ1000 - BASIC DIMENSIONAL DRAWING
	Created	ALLEN MARSH. B	2021-04-23	Drawing Number
	Checked	SANTHAKUMARI. K	2021-04-23	CKQ1000-BASIC
Approved	ANAND BABU. D	2021-04-23	Nominal Mass -	Size A3 Sheet 1 of 2

Rev	ECN	Revised	Rev. Approved	Date	Change Description
00		AM	DAB	2021-04-03	FIRST ISSUE

