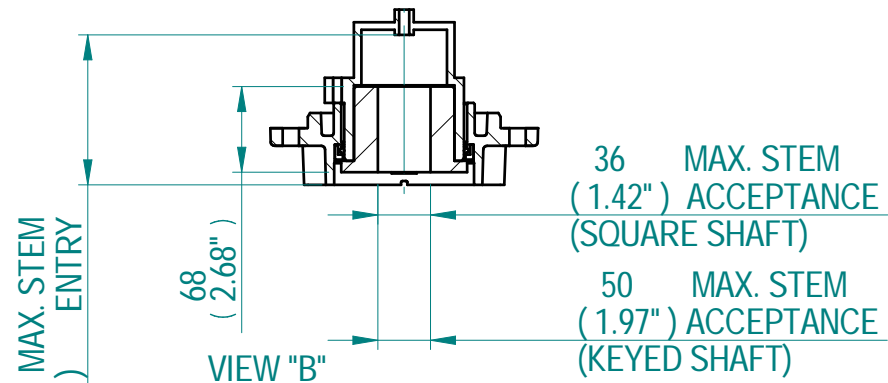
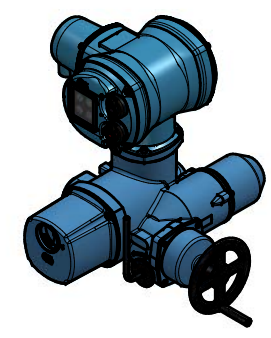
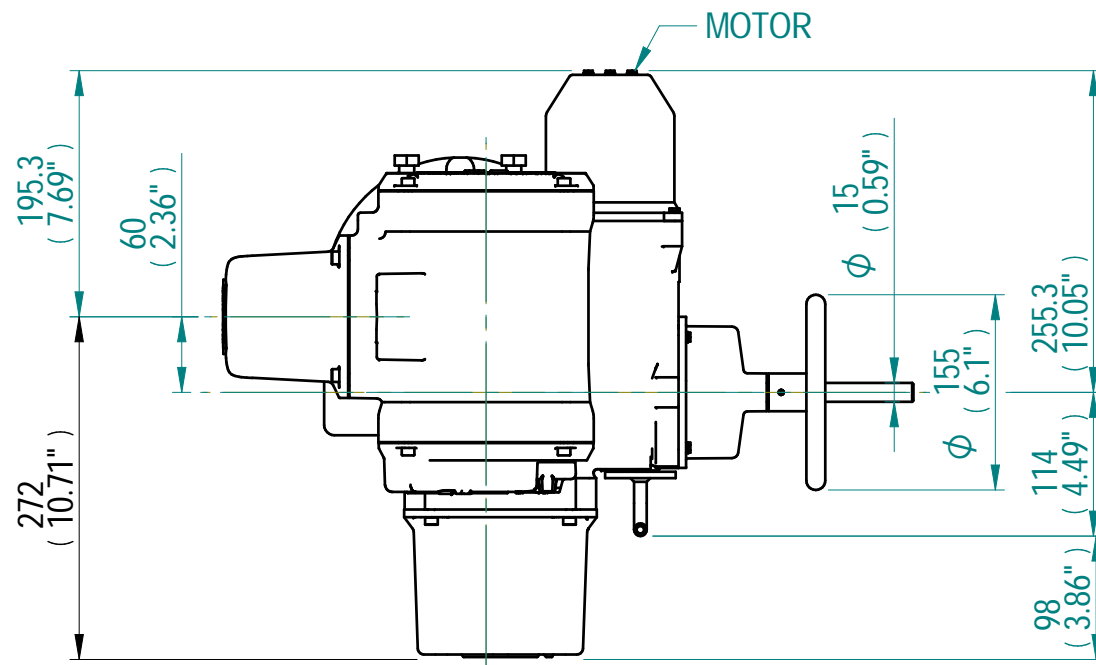
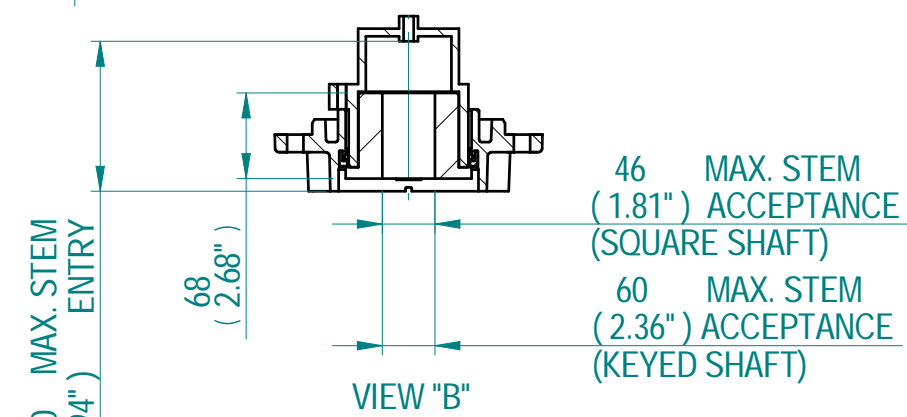


COUPLING DETAILS - F12/FA12

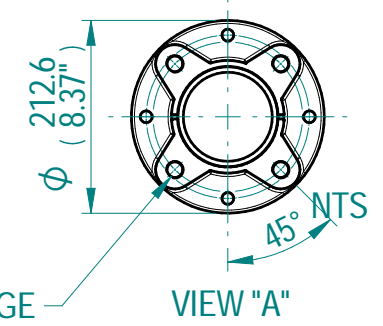


COUPLING DETAILS - F14/FA14 & F16/FA16

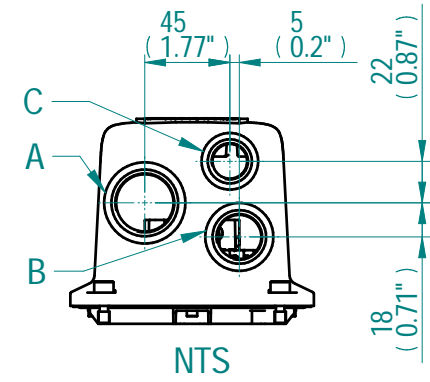
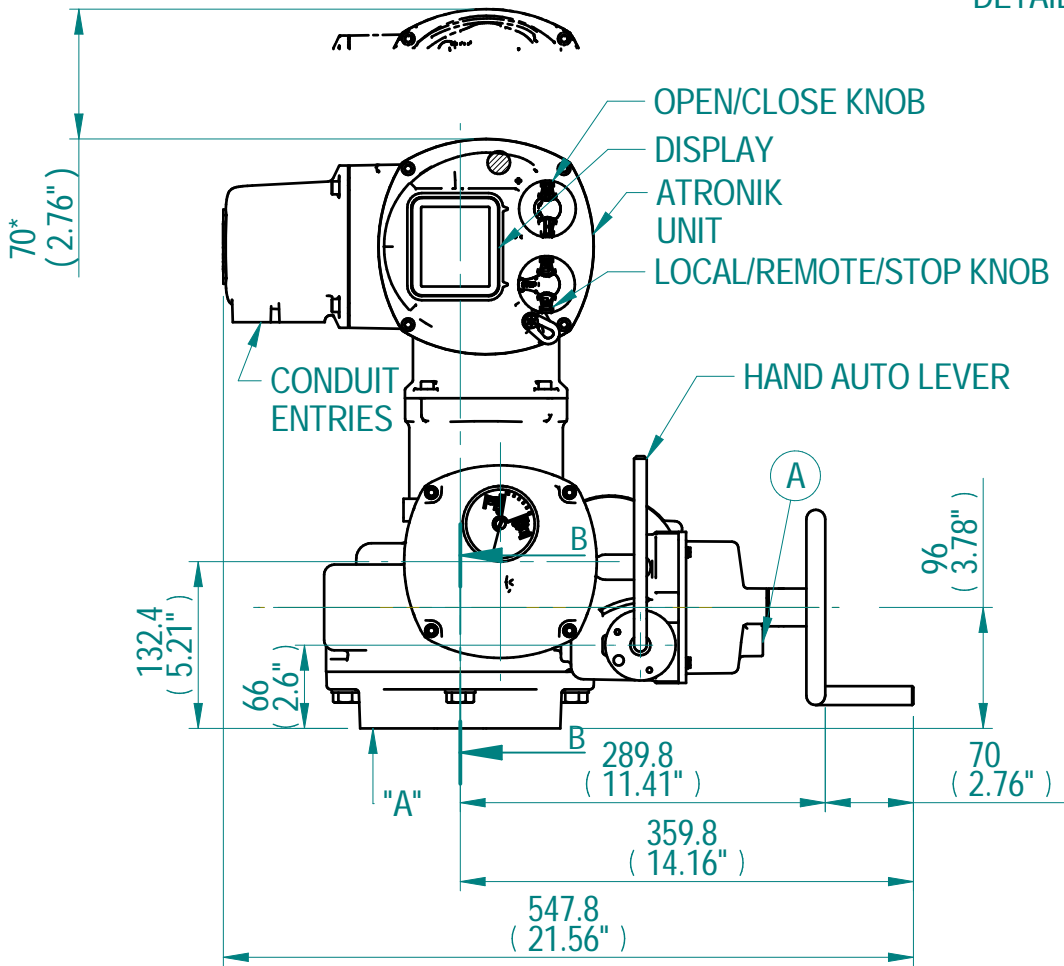


3D VIEW

BASE DETAILS



VIEW "A"



NTS

CONDUIT ENTRY HOLE		
Hole	Metric	NPT
A	M32	1-1/4"
B	M25	3/4"
C	M20	3/4"

MOUNTING FLANGE DETAILS		
FLANGE TYPE	PCD	DETAILS
F12	125	M12X18 DEEP
FA12	125	1/2"UNC X 18 DEEP
F14	140	M16X24 DEEP
FA14	140	5/8"UNC X 24 DEEP
F16	165	M20X30 DEEP
FA16	165	3/4"UNC X 30 DEEP

- NOTES:
 1. APPROXIMATE WEIGHT OF THE ACTUATOR IS 35 KG
 2. ALL CONDUIT ENTRIES ARE PLUGGED WITH WEATHER PROOF PLUGS.
 3. ALL "O" RINGS ARE ASSEMBLED AFTER APPLYING GREASE
 4. (A) OIL FILTERS AND DRAIN PLUGS

Chennai - India
www.rotork.com

©2022 Rotork Group of Companies. All rights reserved. This document and its contents may not be reproduced, distributed, transmitted, displayed, published, or broadcast, in whole, or in part, without the prior express written permission of Rotork Group of Companies.

Dimensions in mm
Scale: 1:5

Title: **CKQ1000 - ATRONIK DIMENSIONAL DRAWING**

Drawing Number: **CKQ1000-ATRONIK**

Rev: **02**

Created	ALLEN MARSH. B	2021-04-23
Checked	SANTHAKUMARI. K	2021-04-23
Approved	ANAND BABU. D	2021-04-23

Nominal Mass - Size A3 Sheet 1 of 2

