

- NOTE:**
- OVERALL ASSEMBLY WEIGHT (APPROX.): 217.9 kg (480 lbs)
  - GEARBOX RATIOS : 120,180,240 & 360:1
  - GEARBOX BASEPLATE: F25/FA25, F30/FA30 & F35/FA35
  - DIMENSIONS WITH "\*" INDICATE COVER REMOVAL ALLOWANCE
  - THE INTERFACE PROVIDED FOR MOUNTING THE ACTUATOR OR SECOND STAGE GEARBOX ONTO THE VALVE SHOULD CONFORM TO GOOD ENGINEERING PRACTICES, ENSURING ADEQUATELY TOLERANCED LIMITS FOR PARALLELISM, PERPENDICULARITY AND CONCENTRICITY.
  - ROTORK CANNOT BE HELD LIABLE FOR DAMAGE TO OUR EQUIPMENT CAUSED BY EXCESSIVE LOADING FROM COVER TUBES, HANDWHEEL AND HAND LEVER.

PARAMETER	VALUE	DESCRIPTION
DRAWING TYPE	A	INSTALLATION DRAWING
ACTUATOR	6	CK(R)C250/500
GEARBOX1	W7	IW7
GEARBOX2	RL	LOW RATIO
TERMINAL COVER	B	3 COND.
MECHANISM / MOTOR	S	STD.MECH/ SMALL MOT.
HANDWHEEL / REAR / FRONT	0	STD.H.W./STD.REAR/STD.FRNT.
ORIENTATION	0	STANDARD ORIENTATION

LEZO - ES  
www.rotork.com

© 2023 Rotork Group of Companies. All rights reserved. This document and its contents may not be reproduced, distributed, transmitted, displayed, published, or broadcast, in whole, or in part, without the prior, express written permission of Rotork Group of Companies.

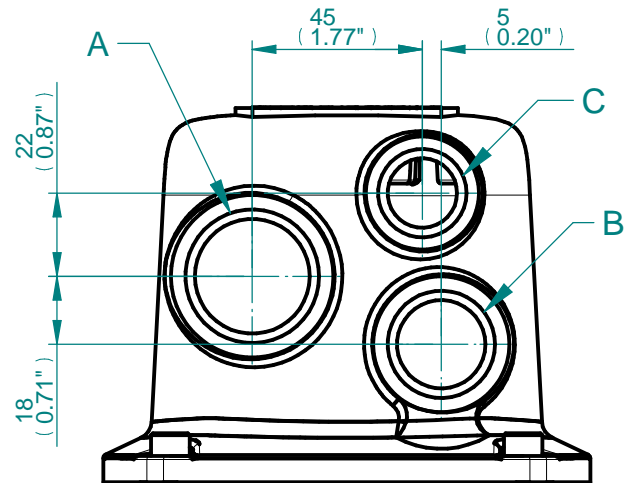
Title: **DD,CK(R)C250/500,IW7,LOW,3 COND.SMALL MTR,STD ORT.**

Created	A.Aashay	2023-09-21	Drawing Number	Rev
Checked	A.Aashay	2023-09-21	<b>A6W7RLBS00X</b>	1-0
Approved	N.Campbell	2023-09-21	Size	A3 Sheet 1 of 2

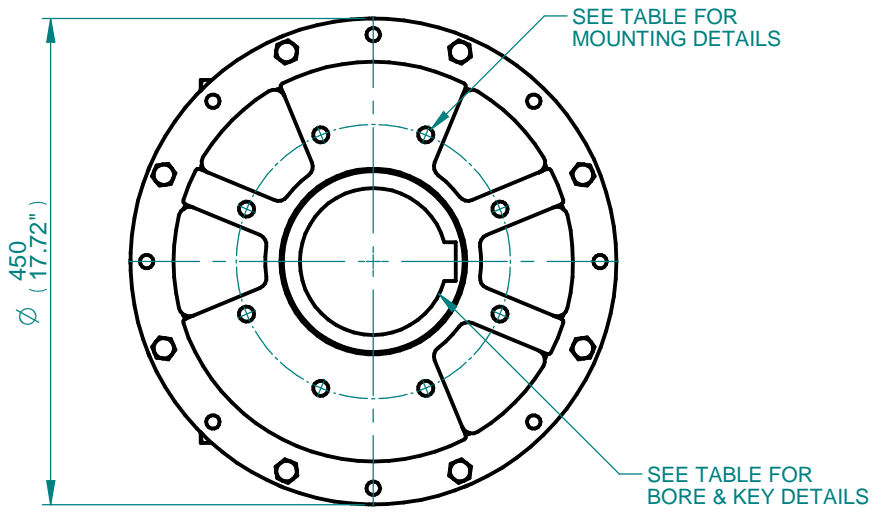
Template Issue : 2021-02-19 (RCL-PE)

Rev	ECN	Revised	Rev. Approved	Date	Change Description
1-0	-	A.Aashay	N.Campbell	2023-09-21	First issue

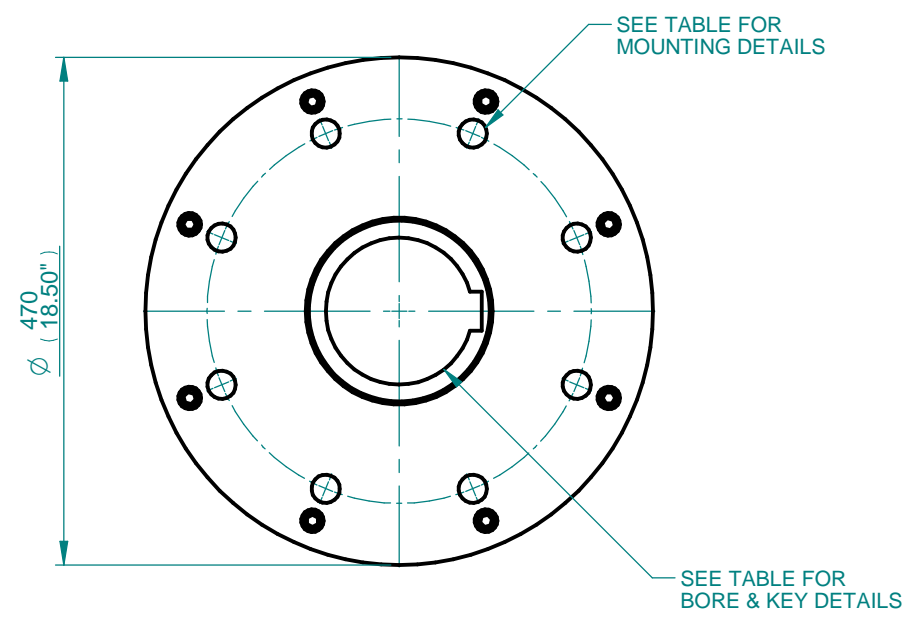
CONDUIT ENTRY HOLE		
Hole	Metric	NPT
A	M32	1 ¼"
B	M25	¾"
C	M20	¾"



CONDUIT ENTRIES



IW7 GEARBOX MOUNTING DETAILS FOR F25/FA25 AND F30/FA30



IW7 GEARBOX MOUNTING DETAILS FOR F35/FA35

BASEPLATE	X	Y	Z
STANDARD THICKNESS	86	140	171
LARGE THICKNESS	117	171	202

STD	MAX BORE SQ KEY		MAX BORE RECTANGULAR KEY	
	BORE	KEY	BORE	KEY
BS4235	-	-	136.0	36X20
BS46	4.875"	1.1/4"SQ	5.125"	1.1/2"X1"
ANSI B17.1	4.875"	1.1/4"SQ	5.25"	1.1/4"X7/8"

BASEPLATE DETAILS		
TYPE	BASEPLATE	HOLE DETAILS (22.5° OFF CENTRES)
ISO F25	STANDARD	8 HOLES M16X24 (0.94") DEEP ON Ø254.00 (Ø10.00") P.C.
FA25		8 HOLES 5/8"UNCX24 (0.94") DEEP ON Ø254.00 (Ø10.00") P.C.
ISO F30		8 HOLES M20X24 (0.94") DEEP ON Ø298.00 (Ø11.73") P.C.
FA30		8 HOLES 3/4"UNCX24 (0.94") DEEP ON Ø298.45 (Ø11.75") P.C.
ISO F35	LARGE	8 HOLES M30X36 (1.42") DEEP ON Ø356.00 (Ø14.02") P.C.
FA35		8 HOLES 1"UNCX36 (1.42") DEEP ON Ø356.60 (Ø14.00") P.C.

LEZO - ES  
www.rotork.com

© 2023 Rotork Group of Companies. All rights reserved. This document and its contents may not be reproduced, distributed, transmitted, displayed, published, or broadcast, in whole, or in part, without the prior, express written permission of Rotork Group of Companies.

Title **DD,CK(R)C250/500,IW7,LOW,3 COND.SMALL MTR,STD ORT.**

Created	A.Aashay	2023-09-21	Drawing Number	Rev
Checked			<b>A6W7RLBS00X</b>	1-0
Approved			Size	A3 Sheet 2 of 2

Template Issue - 2021-02-19 (RCL-PE)

Rev	ECN	Revised	Rev. Approved	Date	Change Description