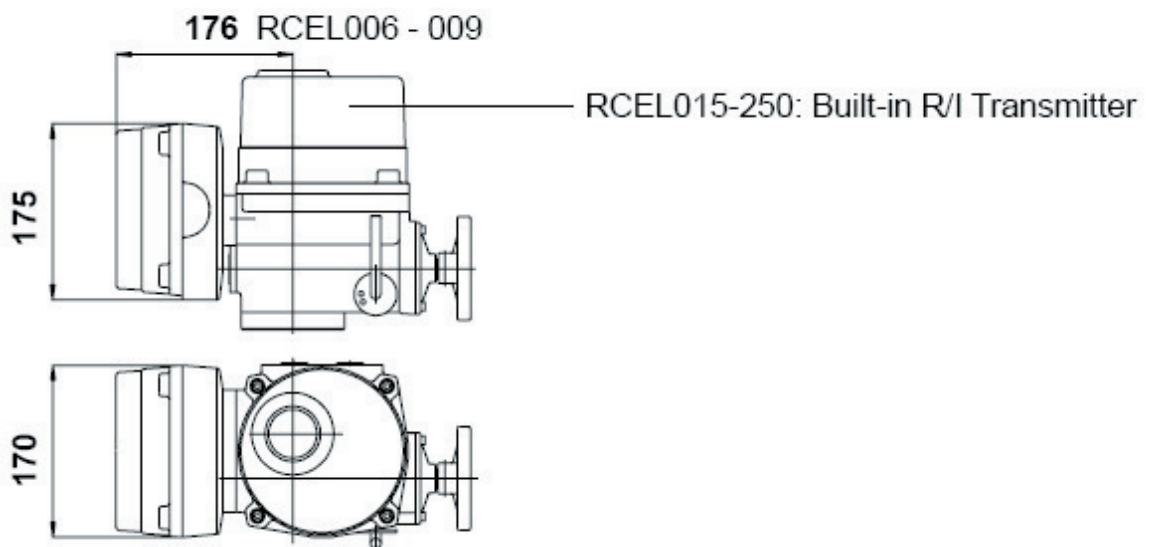




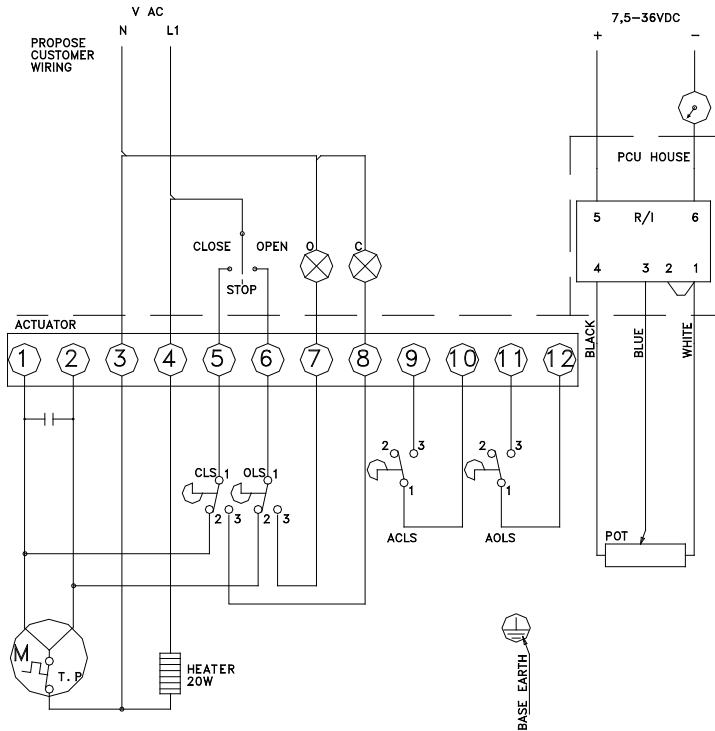
## RCEL With Current Position Transmitter CPT



- For continuous, analogue feed back signal 4-20 mA
- R/I Transmitter
- The electronic components are protected against dirt and similar



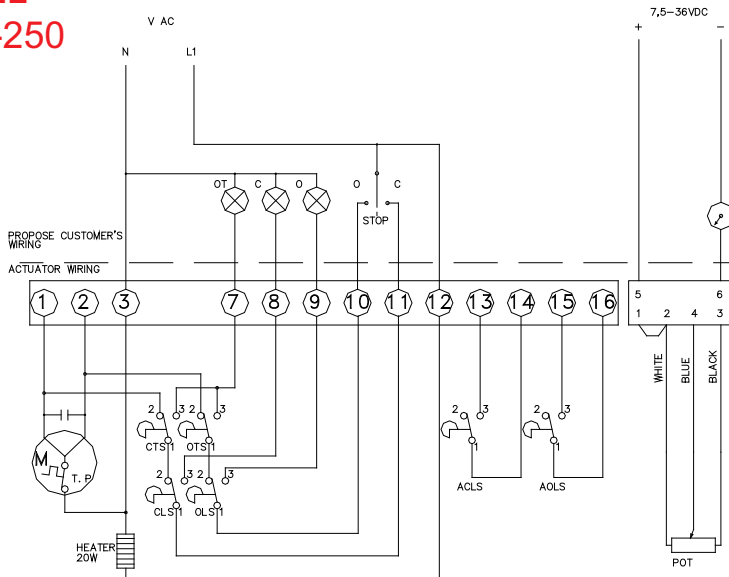
## RCEL 006-009



CLS: Close Limit Switch  
 OLS: Open Limit Switch  
 CTS: Close Torque Limit Switch  
 OTS: Open Torque Limit Switch  
 POT: Potentiometer  
 R/I: R/I Transmitter  
 ACLS: Aux. Close Limit Switch  
 AOLS: Aux. Open Limit Switch

Each actuator should be powered through its own individual switch or relay contacts to prevent cross feed between two or more actuators.

## RCEL 015-250



Ref No 454C / Art No 980454

