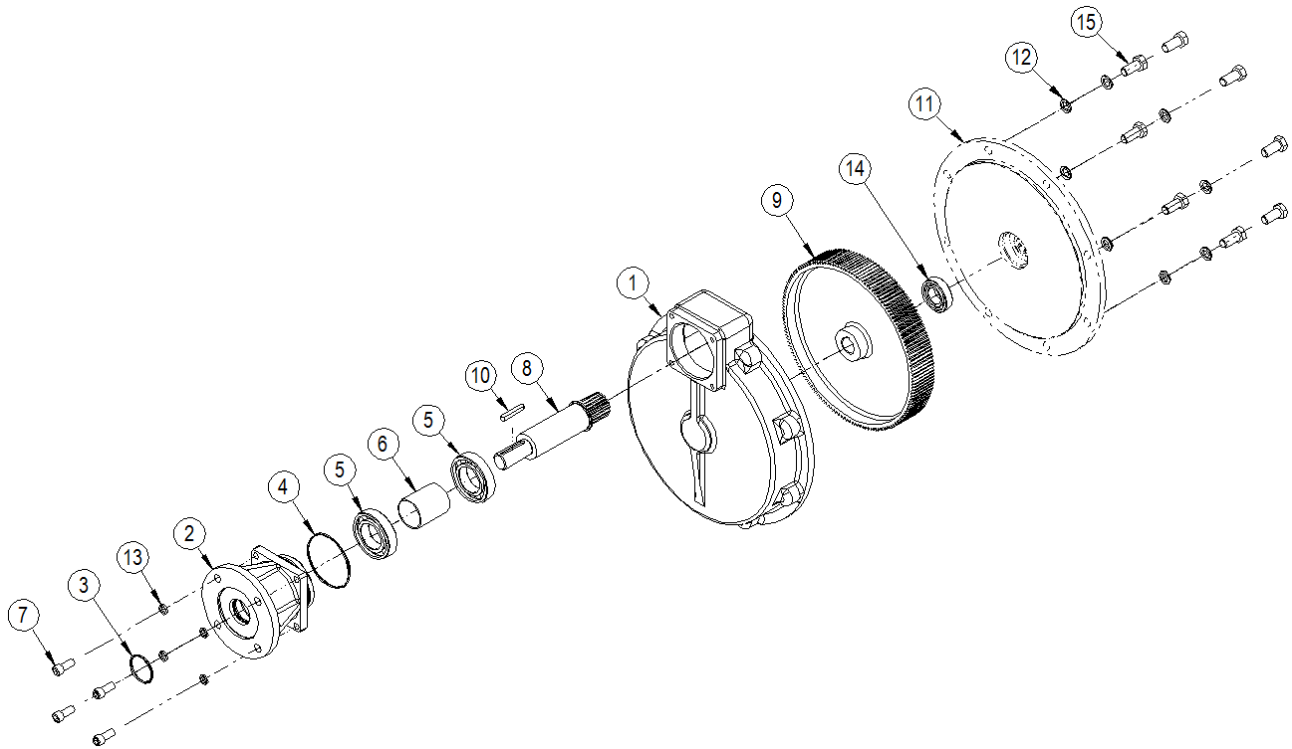


## SPARE PARTS LIST FOR RANGE OF IR1 AND IR2 INPUT REDUCERS



**EXPLODED VIEW FOR IR1 AND IR2 INPUT REDUCER**

| ITEM | DESCRIPTION   | QUANTITY                                  |
|------|---|---|
| 1    | GEARCASE  | 1   |
| 2    | INPUT FLANGE  | 1   |
| *3   | O-RING  | 1   |
| *4   | O-RING  | 1   |
| *5   | BALL BEARING  | 2 (1 on F10 flange on Large IR2)          |
| 6    | SPACER  | 1 (No spacer for F10 flange on Large IR2) |
| 7    | SCREW   | 4   |
| 8    | INPUT SHAFT   | 1   |
| 9    | OUTER GEAR  | 1   |
| 10   | KEY   | 1   |
| 11   | PARENT GEARBOX FLANGE (NOT PART OF THE IR ASSEMBLY) | 1   |
| 12   | NORDLOCK WASHER                                     | 8 (4 on IR1 and small IR2)                |
| 13   | NORDLOCK WASHER                                     | 4   |
| *14  | BALL BEARING  | 1   |
| 15   | SCREW   | 8 (4 on IR1 and small IR2)                |
| 16   | GREASE  |   |

Note: items marked \* are the recommended spares holding for 5 years operation

Items 12 and 13 are only used when in combination with IW52, IW62, IW63, IW72 & IW82.