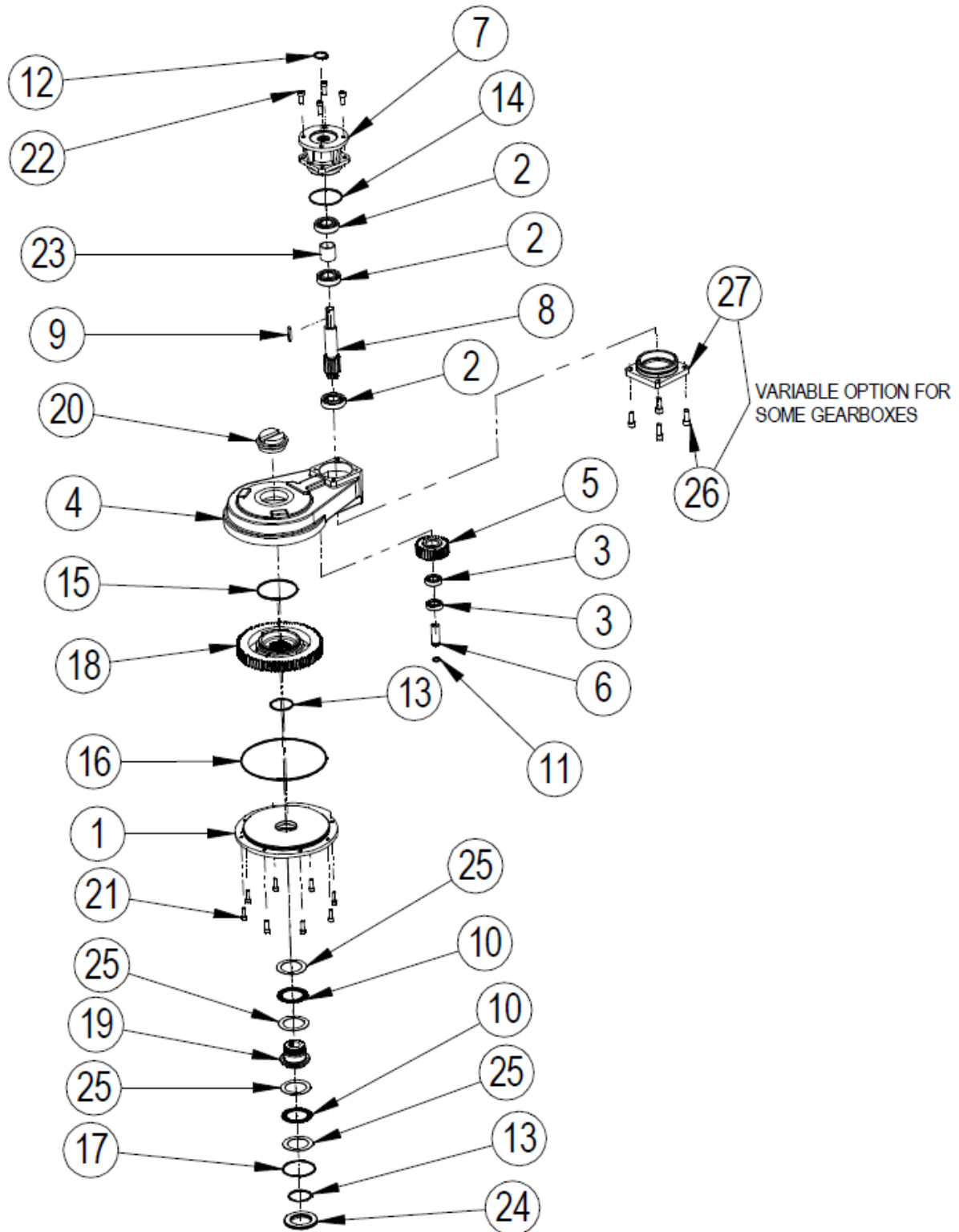


SPARE PARTS LIST FOR IS2 – IS7 & HOS2 – HOS7 RANGE OF SPUR GEAR OPERATORS



EXPLODED VIEW FOR IS2 – IS7 & HOS2 – HOS7 RANGE OF SPUR GEAR OPERATIONS

ITEM	DESCRIPTION	QUANTITY
1	BASEPLATE	1
*2	BALL BEARING	3 (2 FOR HOS)
*3	BALL BEARING	2
4	GEARCASE	1
5	IDLER GEAR	1
6	IDLER SHAFT	1
7	INPUT FLANGE	1
8	INPUT SHAFT	1
9	KEY	1
*10	NEEDLE ROLLER BEARING	2
*11	O-RING	1
*12	O-RING	1
*13	O-RING	2
*14	O-RING	1 for IS/HOS 2 to 5 (2 for IS/HOS 5 to 7)
*15	O-RING	1
*16	O-RING	1
*17	O-RING	1
18	OUTPUT GEAR	1
19	OUTPUT SLEEVE	1
20	PLUG	1
21	SCREW	8
22	SCREW	4
23	SPACER	1
24	SPIGOT RING	1
*25	THRUST WASHER	4
26	SCREWS	4 (Variable option)
27	BLANK ENDCAP	1 (Variable option)
28	GREASE	
29	ANTI-FRICTION COMPOUND	

Note: Items marked * are the recommended spares holding for 5 years operation