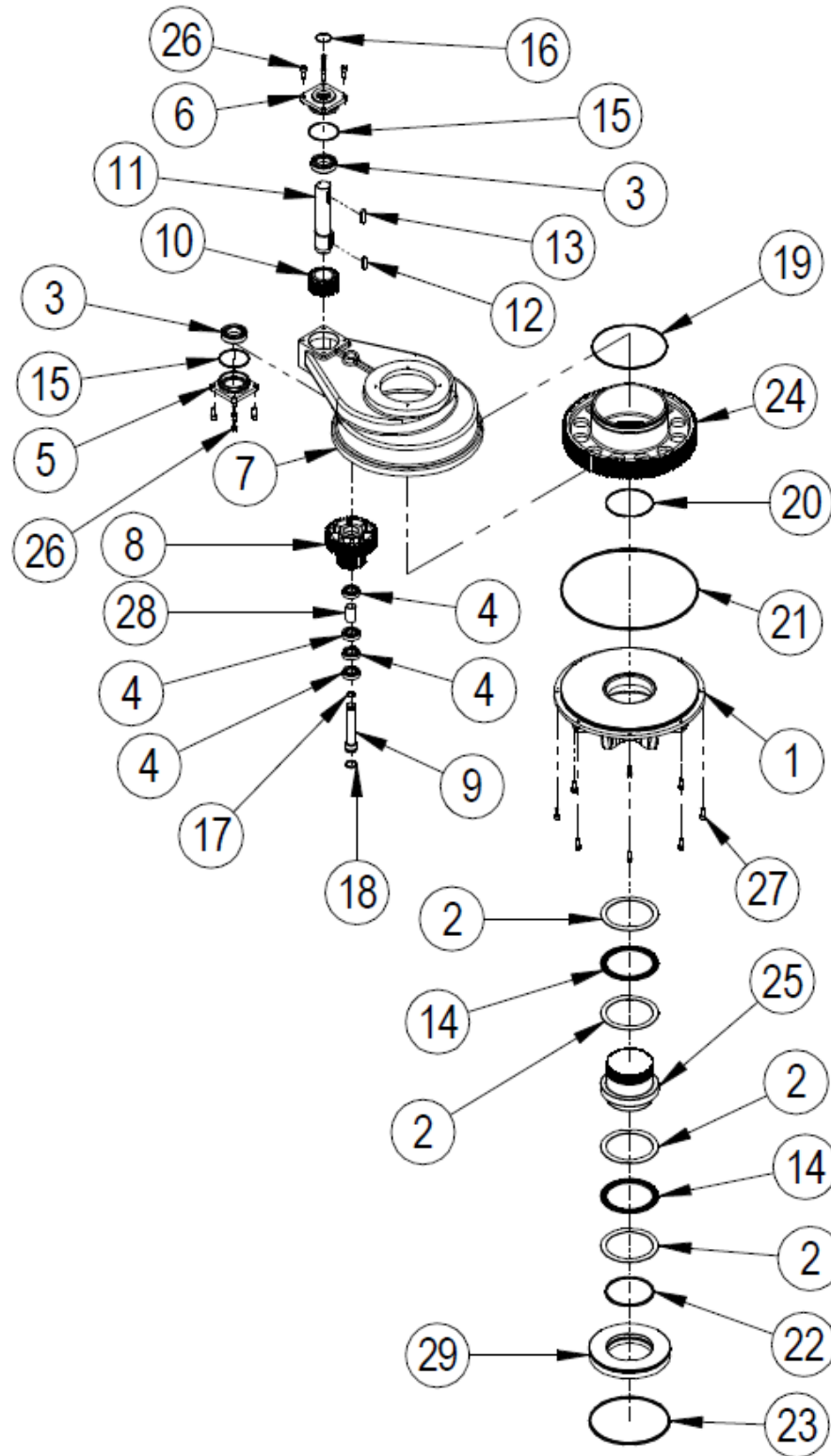


SPARE PARTS LIST FOR IS8 – IS13 & HOS 8 – HOS13 RANGE OF SPUR GEAR OPERATORS



EXPLODED VIEW FOR IS8 – IS13 & HOS 8 – HOS13 RANGE OF SPUR GEAR OPERATIONS

ITEM	DESCRIPTION	QUANTITY
1	BASEPLATE	1
*2	BEARING WASHER	4
*3	BEARING	2 (3 for IS & 1 spacer)
*4	BEARING	4
5	ENDCAP	1
6	INPUT FLANGE	1
7	GEARCASE	1
8	IDLER GEAR	1
9	IDLER SHAFT	1
10	INPUT GEAR	1
11	INPUT SHAFT	1
12	KEY	1
13	KEY	1
14	THRUST BEARING	2
*15	O-RING	2
*16	O-RING	1
*17	O-RING	1
*18	O-RING	1
*19	O-RING	1
*20	O-RING	1
*21	O-RING	1
*22	O-RING	1
*23	O-RING	1
24	OUTPUT GEAR	1
25	OUTPUT SLEEVE	1
26	SCREW	8
27	SCREW	8
28	SPACER	1 (IS/HOS 10+)
29	SPIGOT RING	1
30	GREASE	
31	ANTI-FRICTION COMPOUND	

Note: items marked * are the recommended spares holding for 5 years operation.