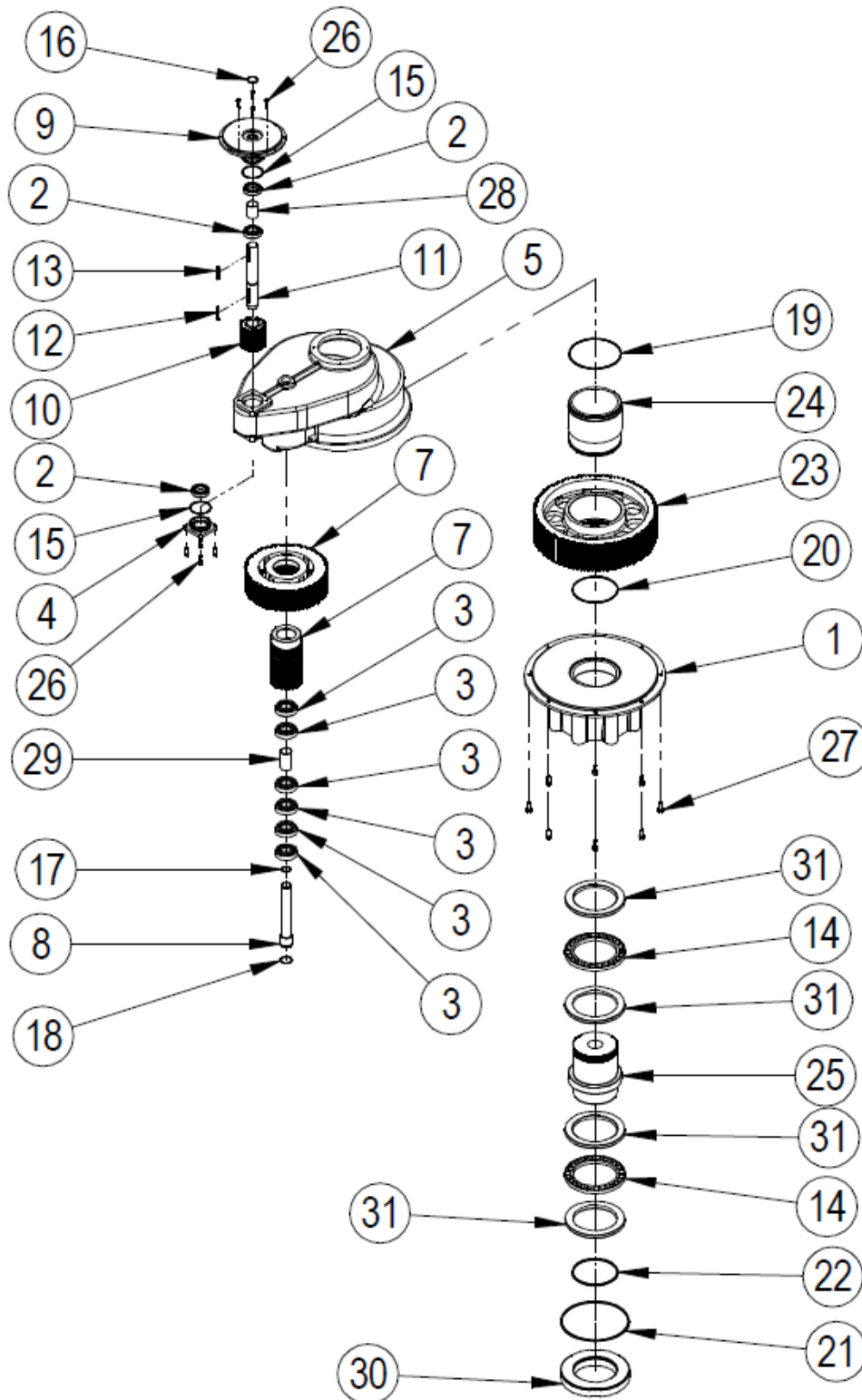


SPARE PARTS LIST FOR IS15 - IS21 & HOS15 - HOS16 RANGE OF SPUR GEAR OPERATORS



EXPLODED VIEW FOR IS15 – IS21 & HOS15 – HOS16 RANGE OF SPUR GEAR OPERATIONS

ITEM	DESCRIPTION	QUANTITY
1	BASEPLATE	1
*2	BALL BEARING	3 (2 for HOS)
*3	BALL BEARING	6, 4 (IS15-IS16 & HOS15 – HOS16)
4	ENDCAP	1
5	GEARCASE	1
6	GREASE	
7	IDLER GEAR	1
8	IDLER SHAFT	1
9	INPUT FLANGE	1
10	INPUT GEAR	1
11	INPUT SHAFT	1
12	KEY	1
13	KEY	1
*14	THRUST BEARING	2
*15	O-RING	2
*16	O-RING	1
*17	O-RING	1
*18	O-RING	1
*19	O-RING	1
*20	O-RING	1
*21	O-RING	1
*22	O-RING	1
23	OUTPUT GEAR	1
24	OUTPUT HUB	1
25	OUTPUT SLEEVE	1
26	SCREW	8
27	SCREW	8
28	SPACER	1
29	SPACER	1
30	SPIGOT RING	1
31	THRUST WASHER	4
32	ANTI-FRICTION COMPOUND	

Note: items marked * are the recommended spares holding for 5 years operation.