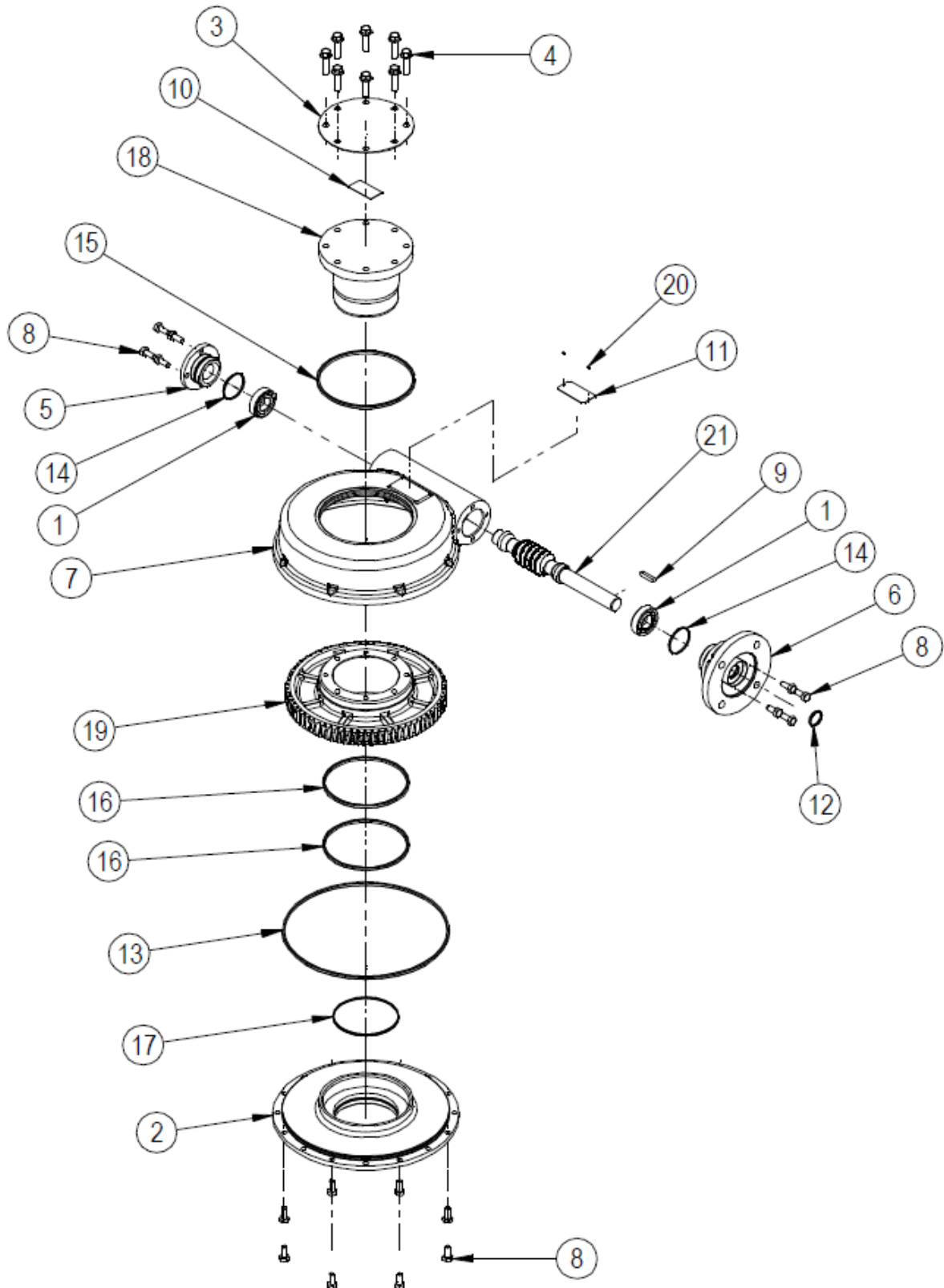


**SPARE PARTS LIST FOR MTW6 RANGE OF WORM GEAR ACTUATORS**



**EXPLODED VIEW FOR MTW6 GEARBOX OPERATIONS**

ITEM	DESCRIPTION	QUANTITY
*1	ANGULAR CONTACT BALL BEARING	2
2	BASEPLATE	1
3	INDICATOR PLATE	1
4	SCREW	8
5	ENDCAP	1
6	INPUT FLANGE	1
7	GEARCASE	1
8	SCREW	16
9	KEY	1
10	LABEL	1
11	NAMEPLATE	1
*12	O RING	1
*13	O RING	1
*14	O RING	2
*15	O RING	1
*16	O RING	2
*17	O RING	1
18	OUTPUT SLEEVE	1
19	WORMWHEEL	1
20	RIVET (STAINLESS NAMEPLATE ONLY)	2
21	WORMSHAFT	1
22	GREASE	
23	SHIMS	

Note: Items marked \* are the recommended spares holding for 5 years operation

Special solid worm wheels do not have output sleeves and screws but do have the same gearbox rating