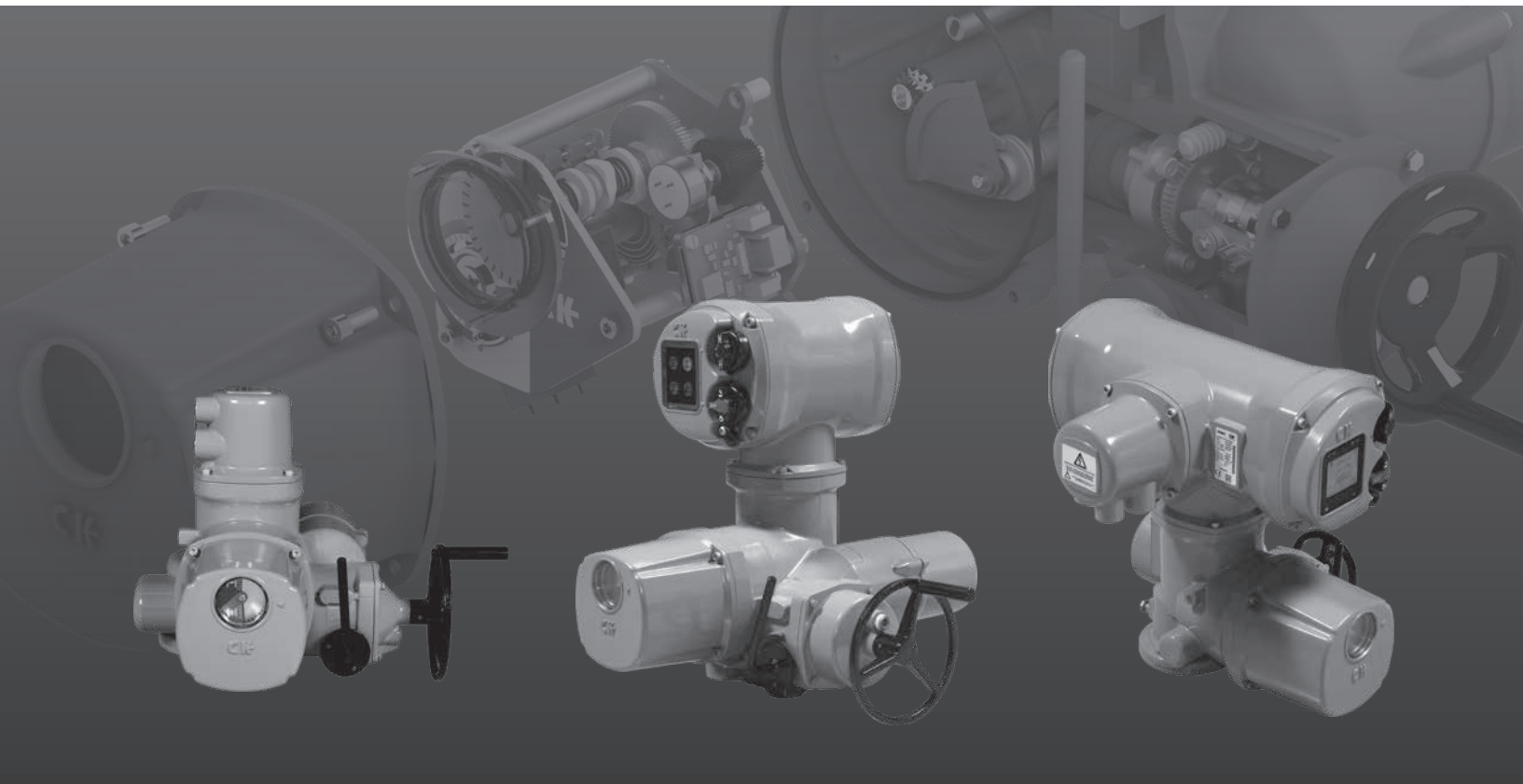


# rotork<sup>®</sup>

Keeping the World Flowing  
for Future Generations

## CKQ Range Spare Parts Manual



Modular Design Electric Valve Actuators

**Note:**

Full details from the actuator nameplate  
must be given when enquiring about or  
ordering spare parts

## Contents

---

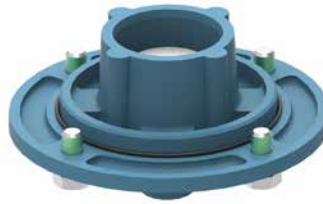
<b>Spares Modules</b>	<b>3</b>
<b>Spare Parts Manual for CKQ Range Actuators</b>	<b>4</b>
Health and Safety	4
Before starting work on actuator	4
Ordering of spare parts	4
<b>Spares Module 1: Gearcase</b>	<b>5</b>
<b>Spares Module 2: Base Assembly</b>	<b>6</b>
<b>Spares Module 3: Mechanical Switch Mechanism</b>	<b>6</b>
<b>Spares Module 4: Handwheel</b>	<b>7</b>
<b>Spares Module 5: Motor</b>	<b>7</b>
<b>Spares Module 6: Centronik</b>	<b>8</b>
<b>Spares Module 7: Terminal Plug / Connector Blocks</b>	<b>10</b>
<b>Spares Module 20: Mechanical Switch Mechanism (MSM) Cover</b>	<b>11</b>
<b>Spares Module 66: Atronik</b>	<b>12</b>

## Spares Modules

---



**Module 1:**  
Gearcase



**Module 2:**  
Bases & Drive Couplings



**Module 3:**  
Mechanical Switch Mechanism



**Module 4:**  
Handwheel



**Module 5:**  
Motor



**Module 6:**  
Centronik



**Module 7:**  
Terminal Plug



**Module 20:**  
Mechanical Switch Mechanism Cover



**Module 66:**  
Atronik

**Note:** Full details from the actuator nameplate must be given when enquiring about or ordering spare parts

### Health and Safety

The electrical installation, maintenance and use of these actuators should be carried out in accordance with the National Legislation and Statutory Provisions relating to the safe use of this equipment, applicable to the site of installation.

**For the UK:** Electricity at Work Regulations 1989 and the guidance given in the applicable edition of "IEE Wiring Regulations" should be applied. Also the user should be fully aware of his duties under the Health and Safety Act 1974.

**For the USA:** NFPA70, National Electrical Code® is applicable.

The mechanical installation should be carried out as outlined in the manual and also in accordance with relevant standards such as British Standard Codes of Practice.

Only persons competent by virtue of their training or experience should be allowed to install, maintain and repair Rotork actuators. Work undertaken must be carried out in accordance with instructions in the manual. The user and those persons working on this equipment should be familiar with their responsibilities under any statutory provisions relating to the Health and Safety of their workplace.

---

### Before starting work on actuator

Before commencing work, isolate all electrical supplies to the actuator and observe site safety regulations.

On completion of repair, refer to publication PUB111-131 for commissioning and start up procedures.

Remember that your actuator is only as watertight as you make it, after completing work. Conduit entries should be sealed in accordance with surrounding environment and with any requirements of the regulatory authority.

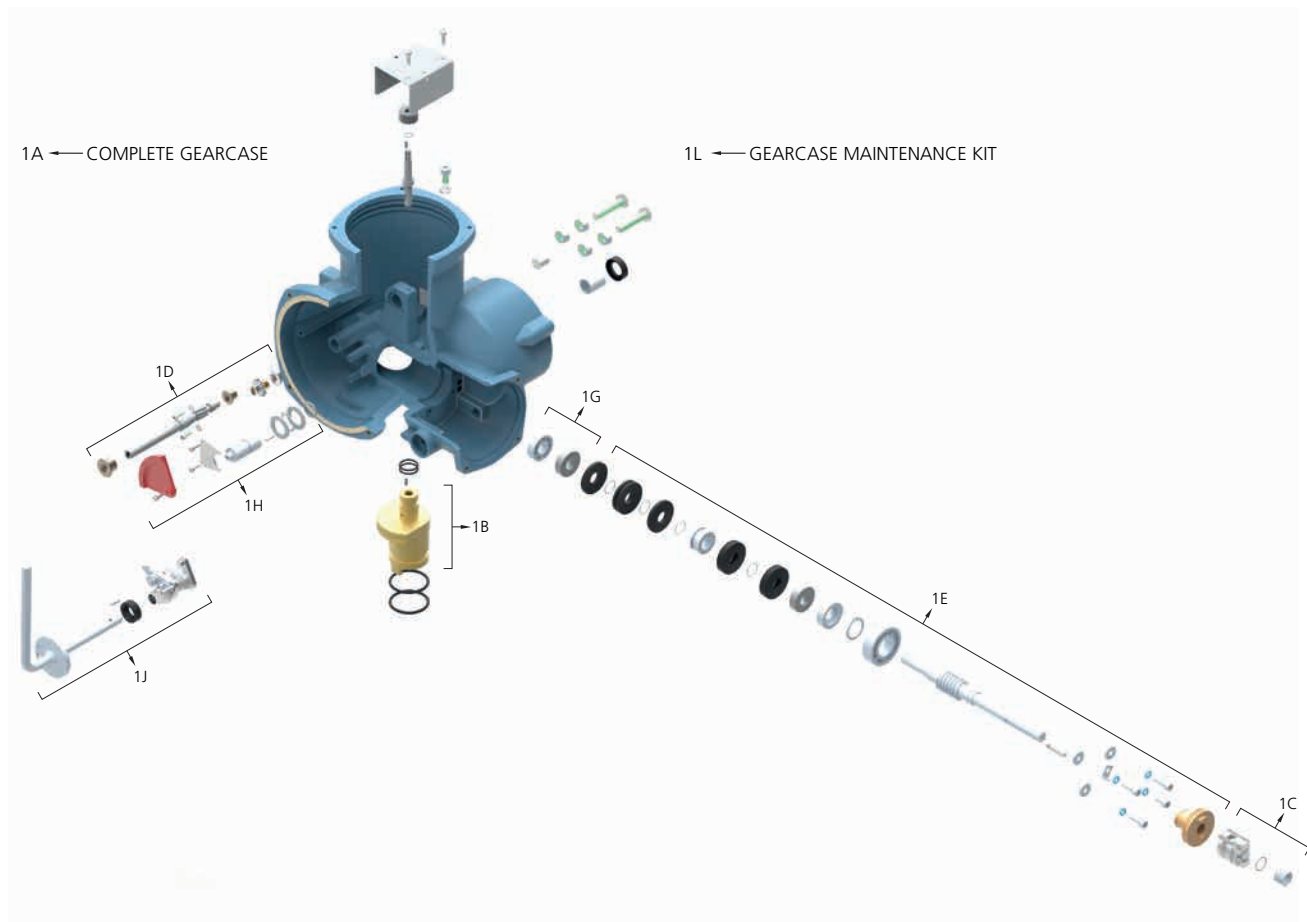
Seal unused entries with threaded metal plugs.

### Ordering of spare parts

**It is essential when ordering a spares module to give the actuator type and serial number.**

Additional information obtained from the actuator name plate would be helpful to enable Rotork to double check the actuator specification. Spares modules may be ordered from your local representative, valve supplier, or direct from Rotork.

## Spares Module 1: Gearcase



1A Complete gearcase, centre column, wormshaft & wormwheel, torque spring pack

1B Centre column

1C Sliding clutch, coil spring, washer, o-ring

1D Switch mechanism drive shaft, bush, clip, seal

1E Wormwheel & wormshaft including spring pack

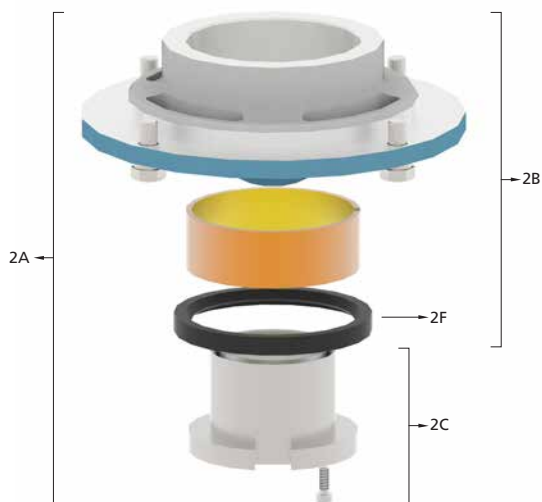
1G Wormshaft maintenance kit.  
Bearings, seals, o-rings, screws etc.

1H Torque mechanism, lever, quadrant gear, gear drive

1J Hand / Auto mechanism, lever, cam, spring, seal

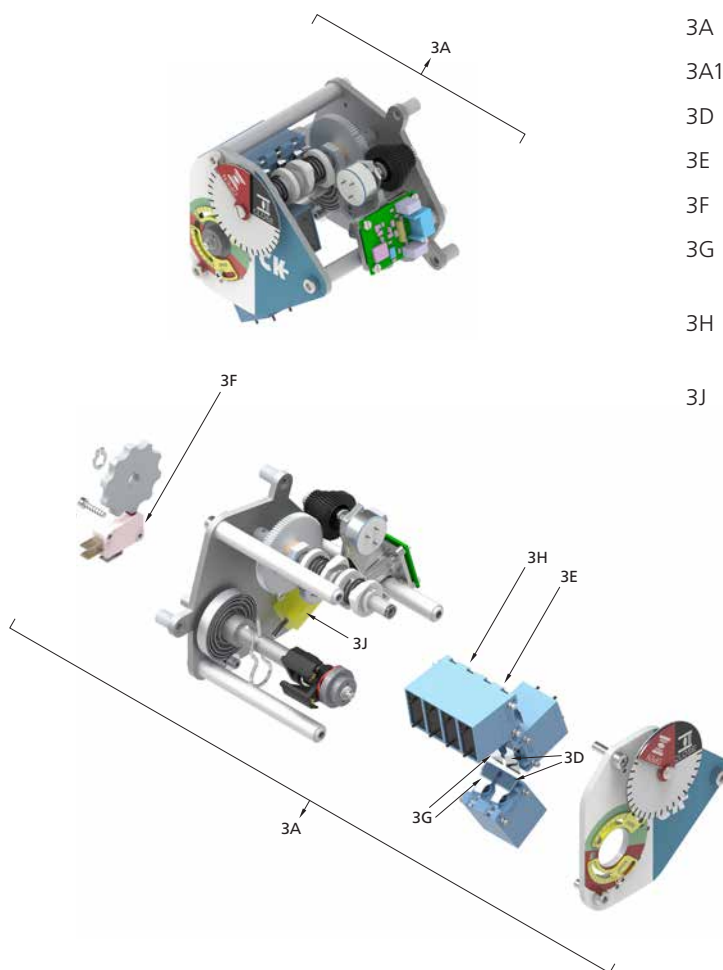
1L Gearcase maintenance kit.  
O-rings, seals, bearings, circlips, screws etc.

## Spares Module 2: Base Assembly



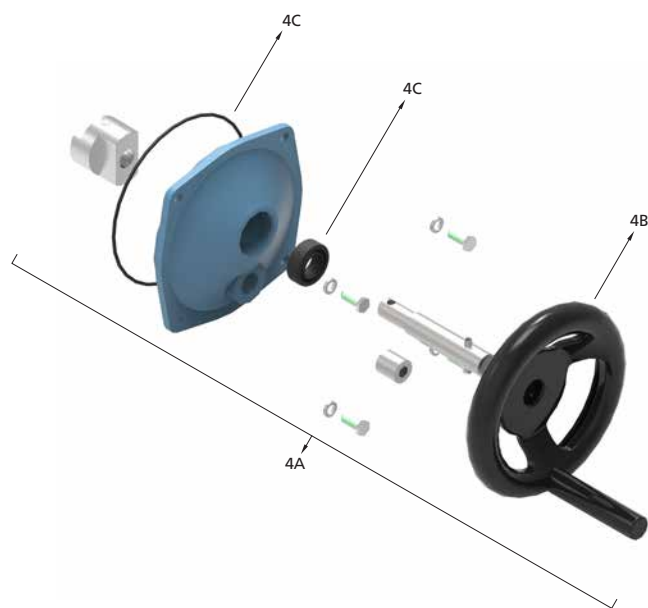
- 2A Base assembly complete, all variants
- 2B Base assembly less drive coupling
- 2C Drive coupling only
- 2F Base maintenance kit.  
O-rings, retainer clip or screws

## Spares Module 3: Mechanical Switch Mechanism



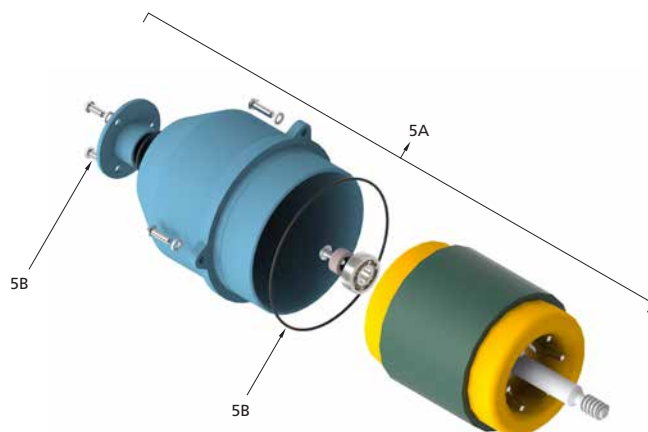
- 3A Mechanical switch mechanism
- 3A1 Mechanical switch mechanism (anti-clockwise)
- 3D Torque switches x2 including looms
- 3E Limit switches x2 including looms
- 3F Blinker switch including loom
- 3G Additional torque indication switches x2 including looms
- 3H Additional limit switches x2 including looms
- 3J Heater

## Spares Module 4: Handwheel



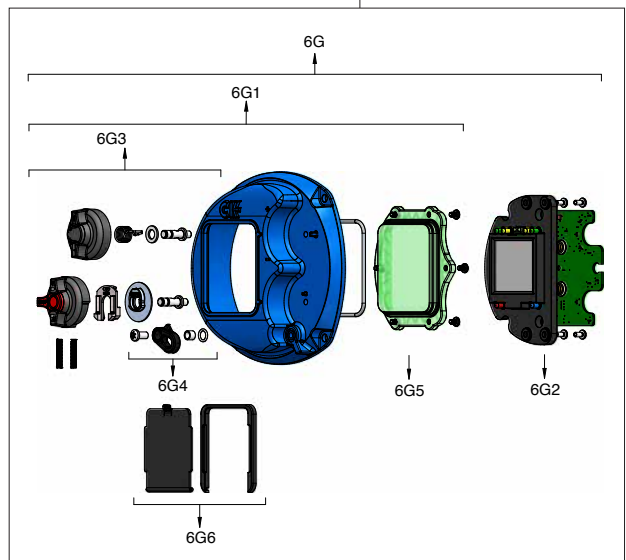
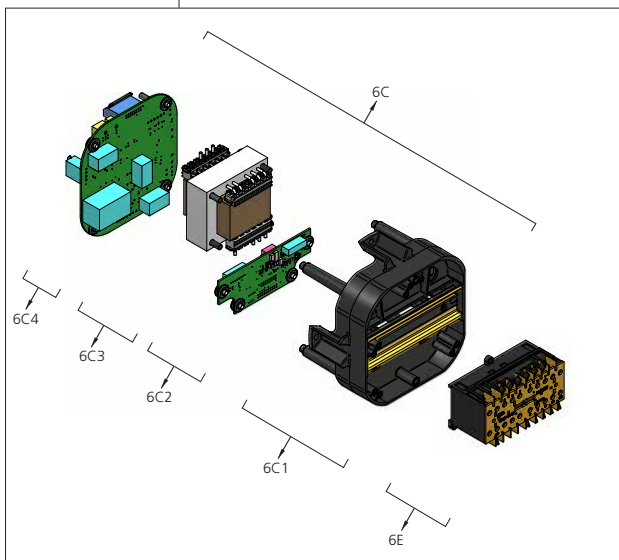
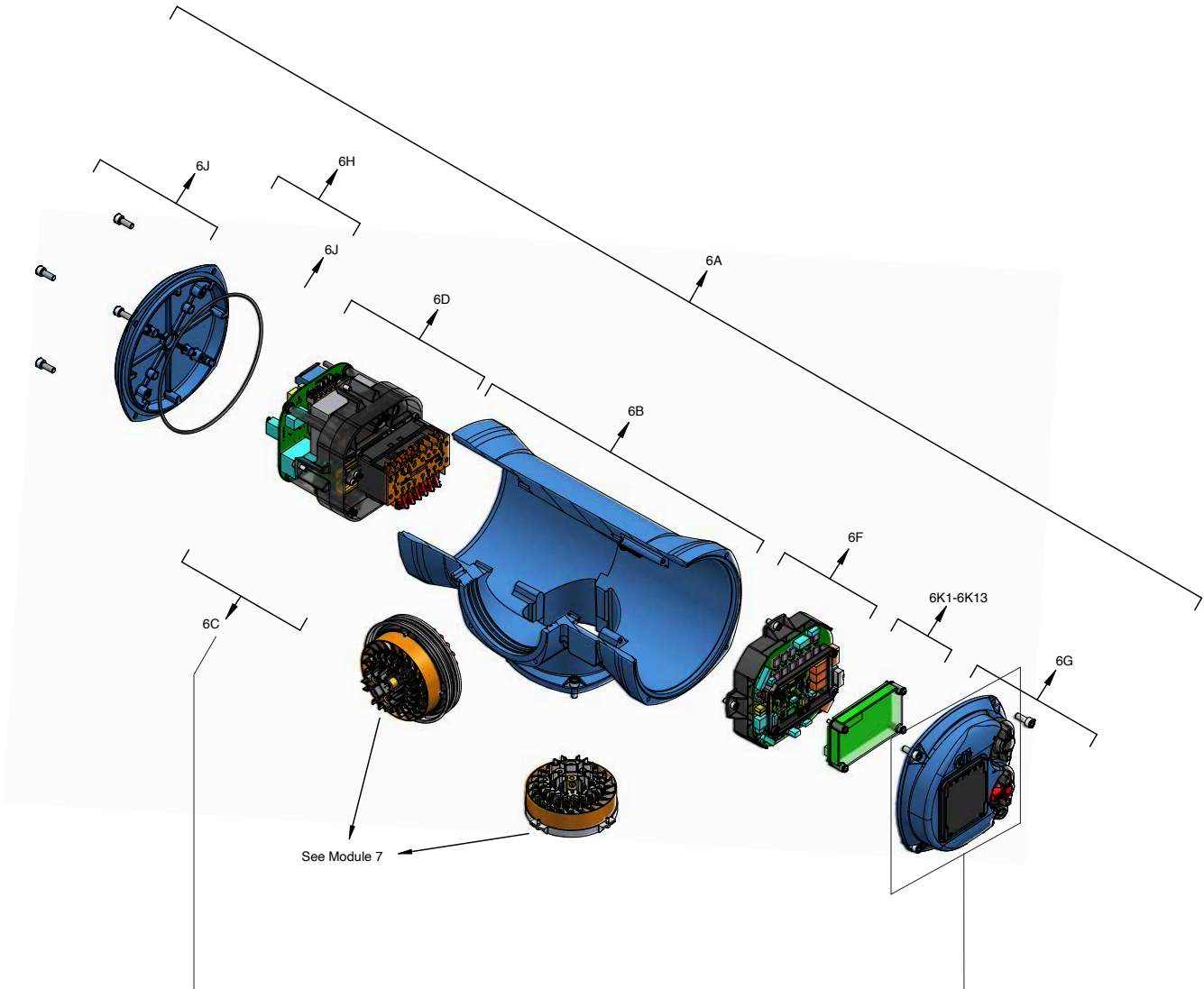
- 4A Handwheel assembly complete.  
Hand coupling, shaft & handwheel (with spur assembly for CKQ1000 handwheel)
- 4B Handwheel only
- 4C Handwheel maintenance kit, bearing, o-rings, seals etc.

## Spares Module 5: Motor



- 5A Motor assembly complete.  
Stator/rotor, motor cover, bearing, screws & o-ring
- 5B Motor maintenance kit.  
Bearing, spring, screws & o-ring

Spares Module 6: Centronik



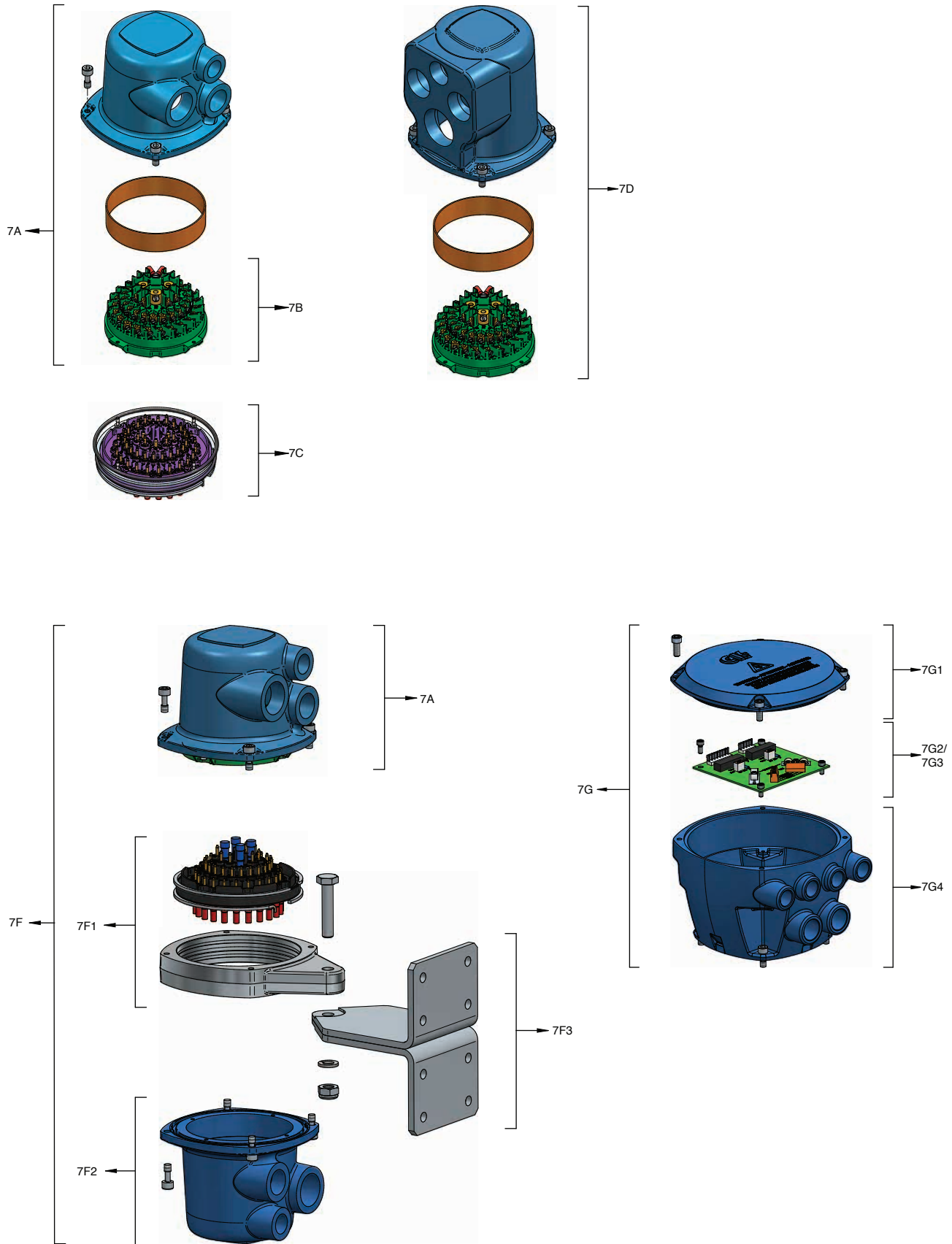


## Spares Module 6: Centronik

---

6A	Centronik assembly complete	6K1	Profibus® DP
6B	Centronik cast body only	6K2	Profibus® DP dual channel
6C	Power module only	6K3	Modbus® RTU
6C1	Power module chassis	6K4	Modbus® RTU dual channel
6C2	Power PCB	6K5	Foundation Fieldbus®
6C3	Transformer	6K6	HART®
6C4	Fuse PCB	6K7	Extra 4 indication relay card
6D	Power module including reversing contactor	6K8	Analogue positioner + current position transmitter
6E	Reversing contactor assembly only	6K9	Analogue current position transmitter (CPT)
6F	Control PCB	6K11	Analogue current position transmitter (CPT) Loop powered
6G	User interface cover complete assembly - Cover, control knobs, HMI PCB, o-ring	6K13	<i>Pakscan</i> ™
6G1	Cover, control knobs. Not including HMI PCB	6L	Auxiliary DC to DC card
6G2	User interface PCB		
6G3	Both control knobs -Open Close and Local Remote		
6G4	Locking latch assembly		
6G5	Window		
6G6	Window UV cover		
6G7	Bluetooth® PCB		
6H	End cover including o-ring		
6J	Cover screws and o-rings		

Spares Module 7: Terminal Plug / Connector Blocks



## Spares Module 7: Terminal Plug / Connector Blocks

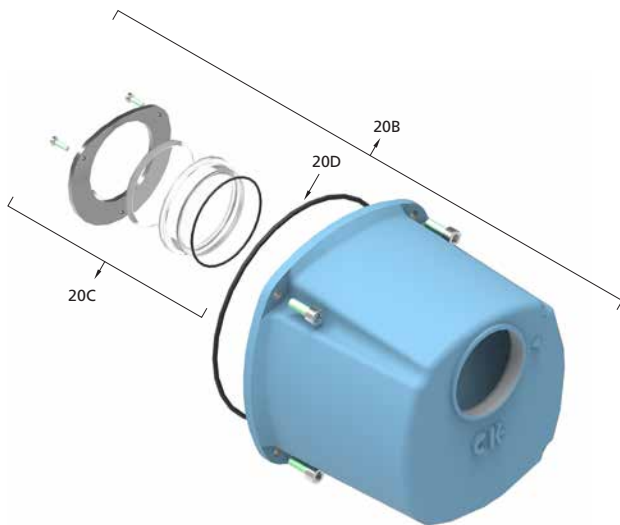
---

7A	Complete assembly	7G	Profibus disconnect module including PCB and connector block
7B	Connector block with sockets	7G1	Module cover
7C	Connector block with pins	7G2	Profibus disconnect PCB only
7D	Plug assembly 4 conduit entries including connector block	7G3	Profibus dual channel disconnect PCB only
7F	Remote mounting kit complete	7G4	Profibus disconnect housing and connector block only
7F1	Remote mounting frame		
7F2	Connector housing		
7F3	Mounting bracket, M10 fixing bolt, lock nut		

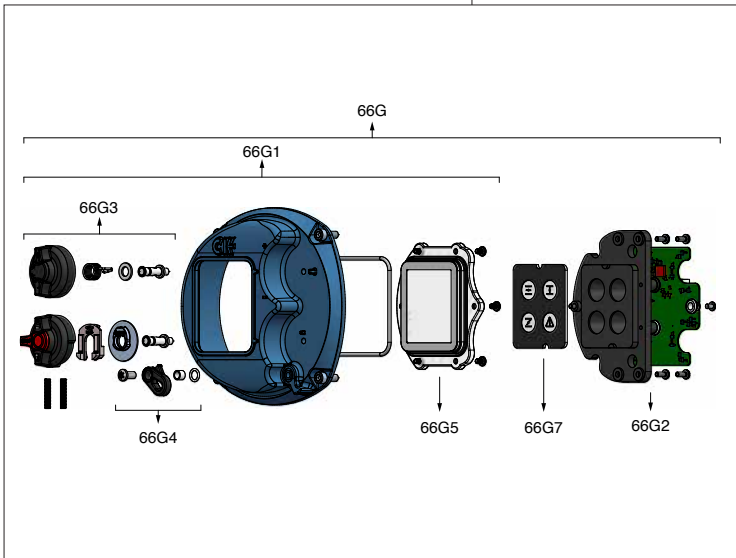
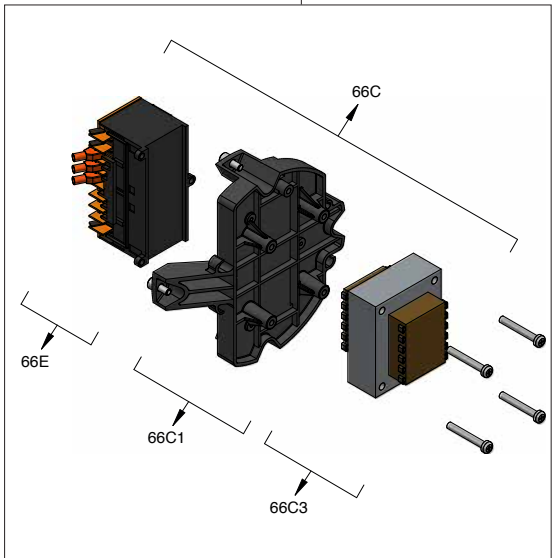
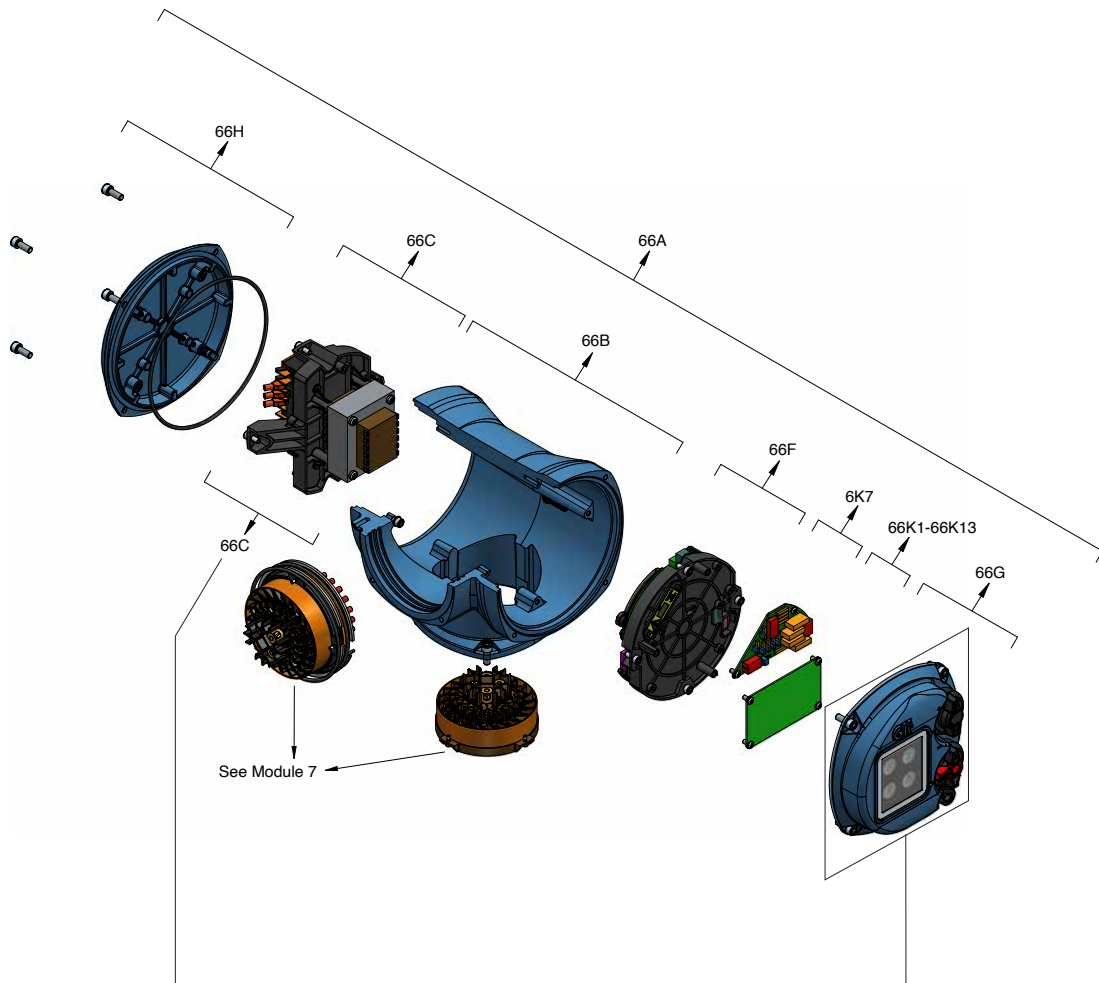
**Note: The same connector blocks are used for terminal plug / Centronik and Centronik / gearcase.**

## Spares Module 20: Mechanical Switch Mechanism (MSM) Cover

---



20B	Mechanical Switch Mechanism cover complete assembly
20C	Switch Mechanism cover window
20D	Cover maintenance kit



## Spares Module 66: Atronik

---

66A	Atronik assembly complete	66K1	Profibus® DP
66B	Atronik cast body only	66K3	Modbus® RTU
66C	Power module assembly including reversing contactor	66K5	Foundation Fieldbus®
66C1	Power module chassis only	66K6	HART®
66C3	Transformer only	66K7	Extra 4 indication relay card
66E	Contactor only	66K8	Analogue positioner + current position transmitter PCB
66F	Control & Power PCB	66K11	Analogue positioner + loop powered current position transmitter PCB
66G	User interface complete assembly, LED status PCB, o-ring & screws	66K13	<i>Pakscan</i> ™
66G1	Cover assembly, control knobs. Not including LED status PCB		
66G2	LED status PCB		
66G3	Both control knobs, Open / Close and Local / Remote.		
66G4	Locking latch assembly		
66G5	Window		
66G7	Window icon card		
66H	End cover including o-ring and screws		
66J	Cover screws and o-rings kit		





# rotork®



[www.rotork.com](http://www.rotork.com)

A full listing of our worldwide sales and service network is available on our website.

Rotork plc  
Brassmill Lane, Bath, UK  
*tel* +44 (0)1225 733200  
*email* [mail@rotork.com](mailto:mail@rotork.com)

PUB111-133-00  
Issue 06/22

As part of a process of on-going product development, Rotork reserves the right to amend and change specifications without prior notice. Published data may be subject to change. For the very latest version release, visit our website at [www.rotork.com](http://www.rotork.com)

The name Rotork is a registered trademark. Rotork recognises all registered trademarks. The Bluetooth® word mark and logos are registered trademarks owned by Bluetooth SIG, Inc. and any use of such marks by Rotork is under license. Published and produced in the UK by Rotork. POLJB0622