

rotork®

Keeping the World Flowing
for Future Generations

Actuator Setting Tool Missions Guide



Instruction Manual

Contents

1. Key Functions	2	5. Loading a Custom Mission	8
2. Introduction	3	6. Mission Function	9
3. Using Insight 2	3	7. Extracting Files	10
4. Setting and Editing Missions	6	8. Passwords	10

1. Key Functions

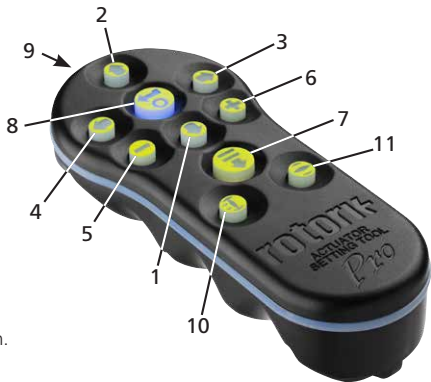
The Actuator Setting Tool *Pro* v1.1 (BTST v1.1)

Name	General Operation
------	-------------------

- | | |
|------------|---|
| 1. ↓ Key* | Display next function down. |
| 2. ↑ Key | Display previous function up. |
| 3. → Key* | Display next function across right / select next actuator / change value (BT mode). |
| 4. ← Key | Display previous function across left / select previous actuator / change value (BT mode). |
| 5. - Key** | Decrease/change displayed function's value or option setting (IR mode). |
| 6. + Key** | Increase/change displayed function's value or option setting (IR mode). |
| 7. ⏏ Key | Long press, Initiates search mode via Bluetooth. Short press initiates IrDA mode / mission. |
| 8. 🗨 Key | Enter displayed value or option setting / initiate BT search. |
| 9. | Infra-red transmitter window. |
| 10. 🔒 Key | Close actuator (Non-functional on SI or CVA actuators). |
| 11. ☰ Key | Open actuator (Non-functional on SI or CVA actuators). |

* Pressing these two arrow keys simultaneously exits the IrDA setting mode and returns the actuator display to the pressure / position indication mode.

** Pressing these two keys simultaneously exits the Bluetooth mode and places the Actuator Setting Tool *Pro* into its idle state.



2. Introduction

The Actuator Setting Tool *Pro* v1.1 (BTST v1.1) combines the legacy IR and IrDA communication protocols with the latest Bluetooth wireless technology. IR / IrDA support for older Rotork products is retained.

The BTST v1.1 can connect to wireless enabled actuators and related software to configure missions. Missions are a defined set of tasks performed by the BTST v1.1 on an actuator. Different missions can be programmed to the BTST v1.1 via Insight 2 software. Custom missions are specialised sequences of instructions that are created using Insight 2 by Rotork field staff or customers.

This document shows you how to load a mission from Insight 2 to an actuator via the Bluetooth Setting Tool (BTST). Please refer to PUB095-013 for BTST safe use instructions.

3. Using Insight 2

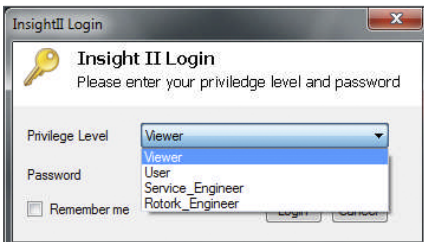


Insight 2 Login

Viewer Mode - Extract and View information Only
Password - 'ROTORK'

User Mode - Extract, View and Upload configuration changes.

Password - 'ROTORK'



BTST v1.1 Slave Mode

Place the setting tool into its Slave mode, so that it can be found by the Insight 2 software: Press and hold the Enter and Download buttons simultaneously for at least one second. The blue LED under the Enter key will flash slowly to indicate that the BTST v1.1 is in Slave mode, and can be discovered by the Insight 2 software. Under no circumstances should any other Windows programs (i.e. Bluetooth connection software) be used to connect to the setting tool. Insight 2 is the only program that will have access to the setting tool.

Put the actuator in 'STOP'

If the Mission includes steps to update the actuator's firmware, you must ensure that the actuator is in STOP - otherwise the Mission will fail. If the Mission doesn't include instructions to perform a firmware update, it will not be necessary to put the actuator in STOP, but it is still good practice to do so (if site conditions allow).

3. Using Insight 2 continued

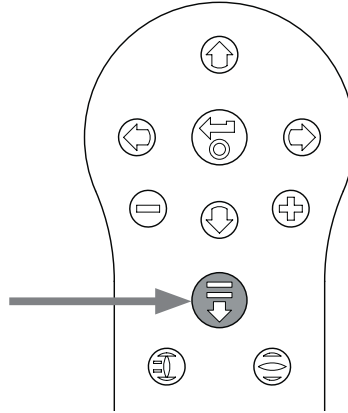
⚠ WARNING:

It is important to know what mission is set on the BTST v1.1 before attempting to connect to an actuator. Failure to do so may render the actuator unusable or unstable.

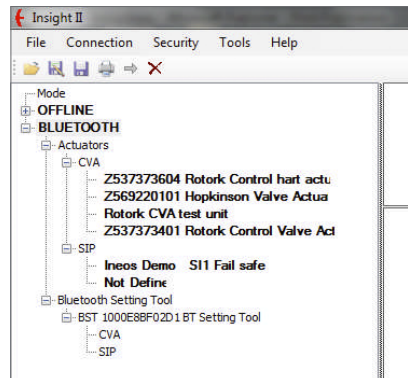
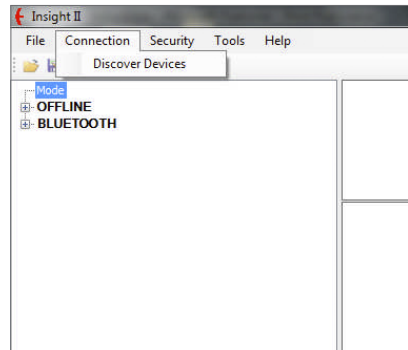
⚠ WARNING:

Before using the BTST v1.1 it is necessary to clear the tool of any previous missions.

To clear the setting tool of all pre-installed missions without using Insight 2, press and hold the **↑** Key and **↓** Key simultaneously for 5 seconds. The **↕** and **⇅** Key will flash green alternately to indicate the missions have been cleared.



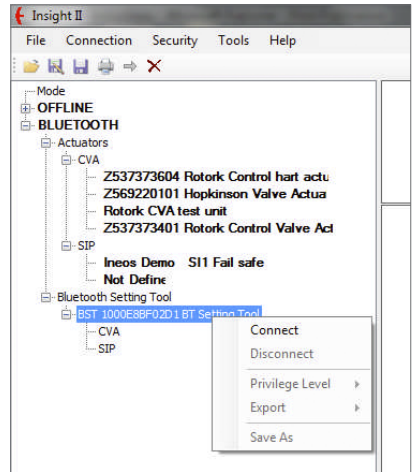
1. To connect to the BTST v1.1: Click on the Connection tab and then click discover devices. A few attempts may be required before a device is found – this is normal behaviour.
2. Once the search is complete, any discovered devices will be listed in the left hand (mode) panel.



3. Using Insight 2 continued

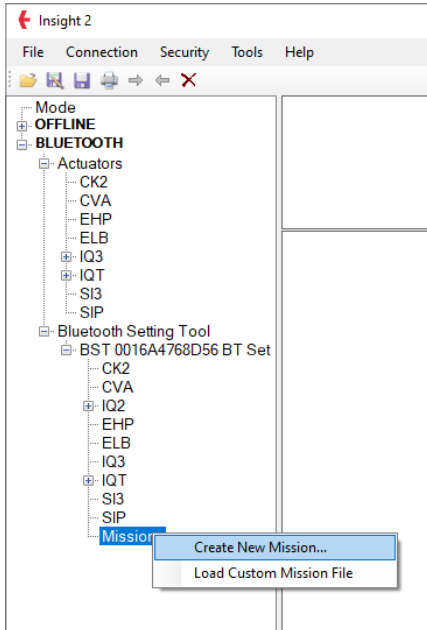
3. Right click the Bluetooth Setting Tool entry and click connect.
4. The blue LED under the Enter key should flash more rapidly to indicate an active connection between the BTST v 1.1 and Insight 2 software.

At this stage missions can be viewed / edited and data collected can be extracted.



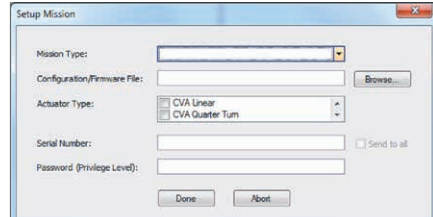
4. Setting and Editing Missions

⚠ WARNING: Pay attention to the Actuator Type when configuring a mission. Only set the Actuator Type for the required mission.

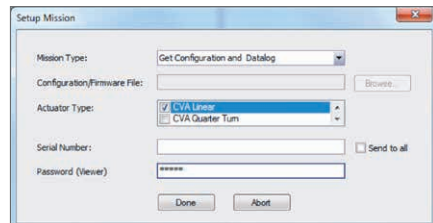


1. To set a new mission, right click Missions in the setting tool navigation tree and then click 'Create New Mission'.
2. The New Mission window will appear.

3. Using the Mission type drop down box, select the mission you require. For most cases this will be Get configuration and Datalog files.

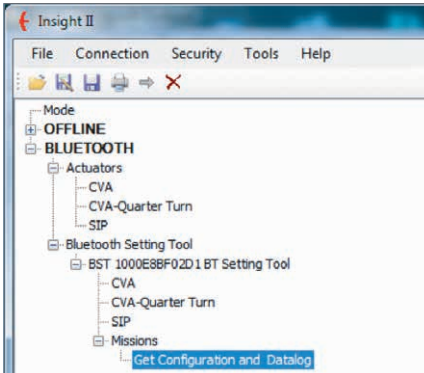


4. Next select the type of actuator you wish to extract these files from. You can select more than one type for a passive mission.
5. If you only want to extract from one actuator in particular, you can enter it's serial number. If you want to collect files from more than one actuator, click the 'send to all' checkbox.
6. Finally enter the relevant password for the actuator. For configuration and datalogger refer to Section 7.

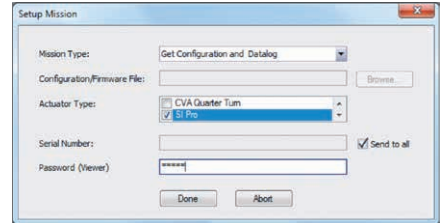


4. Setting and Editing Missions continued

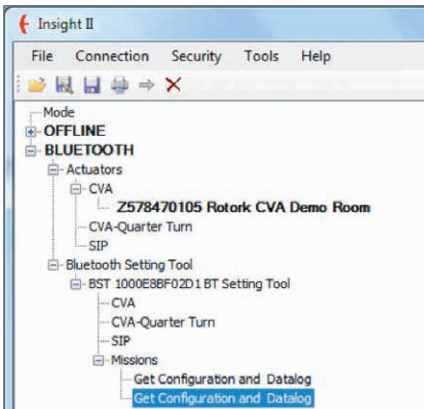
Once the mission has been set click 'Done' and the navigation tree will be updated to show that a mission has been set.



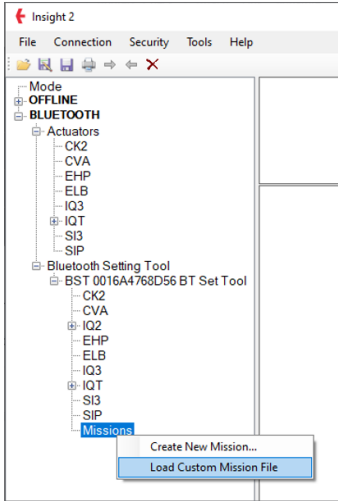
After completing the set mission function, the tool can be set to idle mode either by pressing the + / - keys simultaneously or by using the disconnect function in Insight 2. The mission set can now be executed by following the 'Execute the Mission' instructions in Section 6.



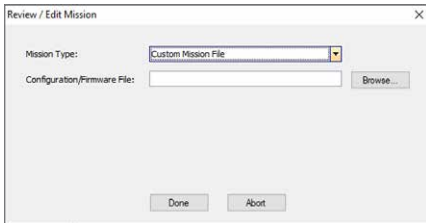
You can also set multiple missions. This would normally include for instance another Datalogger and configuration download where the actuator uses a different password. Repeat the same procedure when adding missions and the updated navigation tree will look like this:



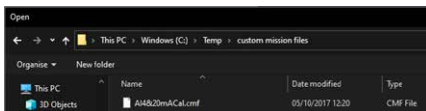
5. Loading a Custom Mission



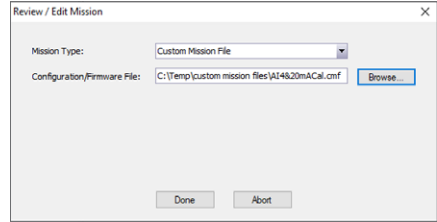
1. To set up the BTST with a custom mission file that may have been created for a specific function, right click Missions in the setting tool navigation tree and then click 'Load Custom Mission File'.
2. The Review / Edit Mission window will appear.
3. Leave the Mission Type as 'Custom Mission File' browse for the mission file on your PC (assumes the file is already present on your PC).



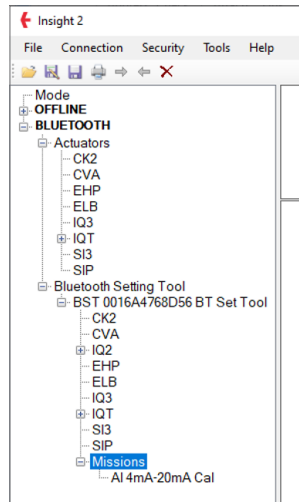
4. The mission file will have a '.CMF' extension.



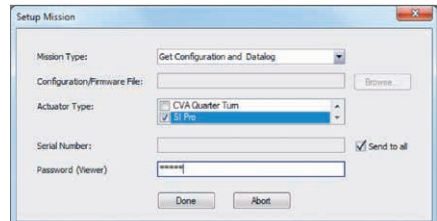
5. Select the appropriate Mission file and Click 'Done'.



6. The Mission file will be loaded into the BTST and the updated navigation tree will look like this:



After completing the set mission function, the tool can be set to idle mode either by pressing the + / - keys simultaneously or by using the disconnect function in Insight 2. The mission set can now be executed by following the 'Execute the Mission' instructions in Section 6.



6. Mission Function

⚠ WARNING:

It is important to know what mission is set on the BTST v1.1 before attempting to connect to an actuator. Failure to do so may render the actuator unusable or unstable.

1 Put the actuator in 'STOP'

If the Mission includes steps to update the actuator's firmware, you must ensure that the actuator is in STOP - otherwise the Mission will fail. If the Mission doesn't include instructions to perform a firmware update, it will not be necessary to put the actuator in STOP, but it is still good practice to do so (if site conditions allow).

2 Execute the Mission

Once the desired actuator has been selected (see 'Selecting the desired device' in PUB095-013), the Mission can be initiated. The blue LED beneath the ENTER key will be illuminated indicating that an actuator has been selected.

Press the DOWNLOAD key and the ENTER key will start to flash, press the ENTER key within 2 seconds to initiate the Mission. If you change your mind let the ENTER key stop flashing and the Mission will not initiate.

If the Mission completes successfully, the green LEDs under the ENTER and DOWNLOAD keys will alternate green for 5 seconds before returning to the solid blue LED. If the Mission fails, the red LEDs under the Enter and Download keys will alternate red for 5 seconds.

If the operator wishes to abort the operation, pressing the + / - buttons simultaneously on the Actuator Setting Tool *Pro* returns the tool to its idle state.



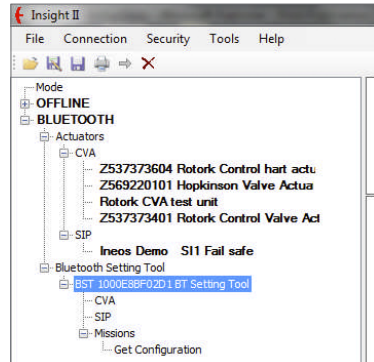
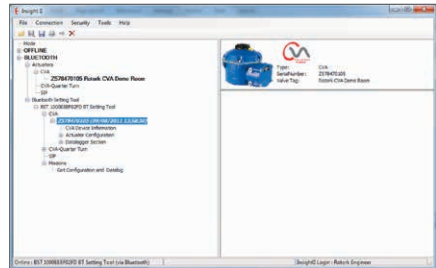
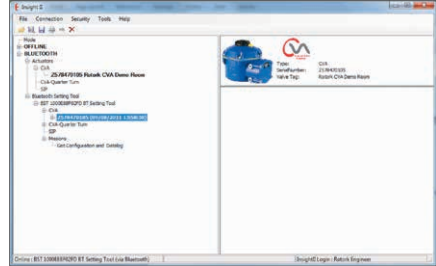
7. Extracting Files

Extracting Files

Follow instructions in Section 2 to put the BTST v1.1 into slave mode. This time the tree will indicate the presence of one or more files and these files will be located by actuator type.

Clicking on a file will automatically extract and display the file. Once the file has been extracted the navigation tree will expand to show the different items in the file.

Click on the entry you require for access to the settings / log file.



8. Passwords

	Insight 2	IQ Range / CK Range / SI Range	CVA Range	SI Pro Range
View	ROTORK	ROTORK	VIEW	PASSWORD
User	ROTORK	ROTORK	SULIS	PASSWORD

rotork®



www.rotork.com

A full listing of our worldwide sales and service network is available on our website.

UK
Rotork plc
tel +44 (0)1225 733200
email mail@rotork.com

PUB095-024-00
Issue 08/23

As part of a process of on-going product development, Rotork reserves the right to amend and change specifications without prior notice. Published data may be subject to change. For the very latest version release, visit our website at www.rotork.com

The name Rotork is a registered trademark. Rotork recognises all registered trademarks. The Bluetooth® word mark and logos are registered trademarks owned by Bluetooth SIG, Inc. and any use of such marks by Rotork is under license. Published and produced in the UK by Rotork. POLIB0823