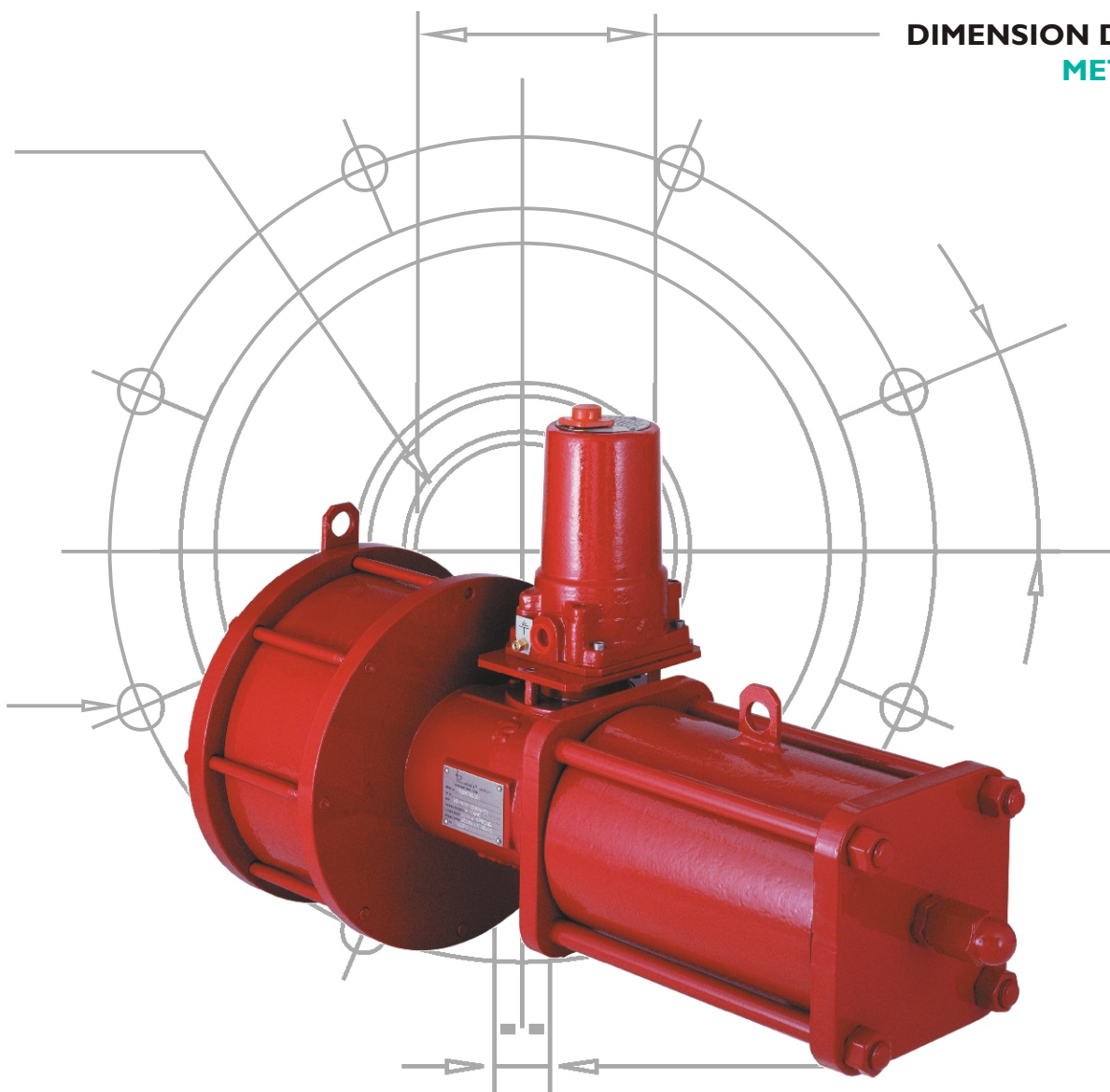


RP RANGE

PNEUMATIC RACK AND PINION ACTUATORS

DIMENSION DATA
METRIC



MODEL NUMBER KEY

RP RANGE

rotork[®]
fluid system

DIMENSION DATA - METRIC

A B - C C C - E E E F / G G - H H

ACTUATOR TYPE

R = RACK & PINION TYPE

SUPPLY TYPE

P = PNEUMATIC

CENTRE BODY SIZE

015, 030, 060, 120, 240

CYLINDER SIZE (mm)

SEAL MATERIALS

A = NBR - LOW PRESSURE - NORMAL TEMPERATURE

B = VITON - LOW PRESSURE - HIGH TEMPERATURE

C = FLUOROSILICONE - LOW PRESSURE - LOW TEMPERATURE

EXECUTION TYPE

C1-C9 = SINGLE ACTING - FAIL TO CLOSE - SIZE 1-9

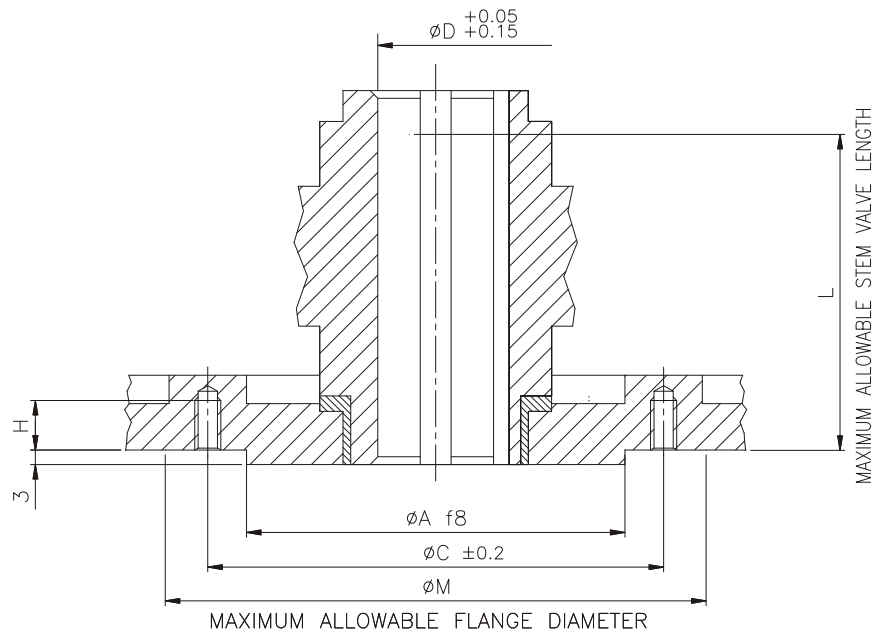
O1-O9 = SINGLE ACTING - FAIL TO OPEN - SIZE 1-9

D1 = DOUBLE ACTING - SINGLE CYLINDER

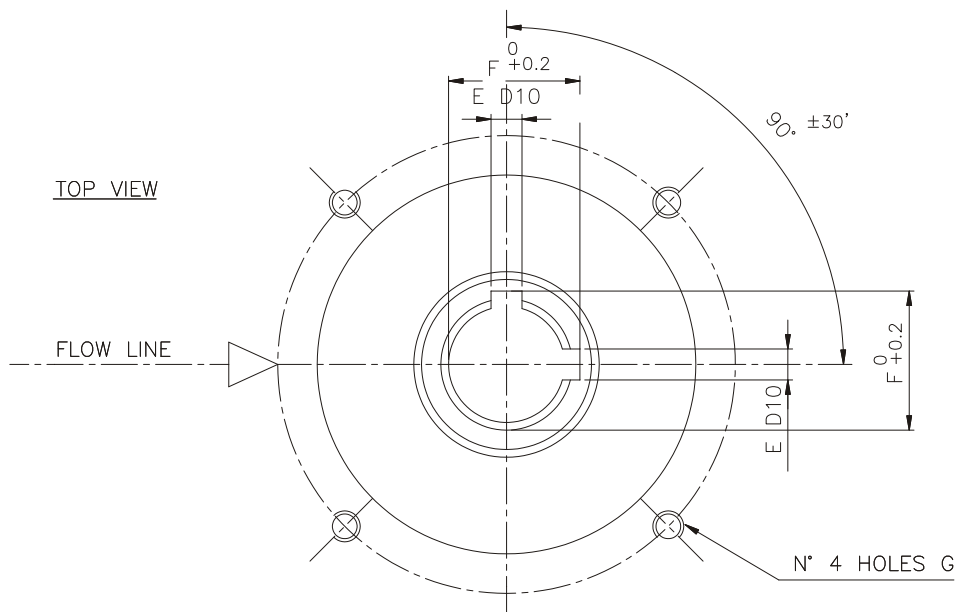
D2 = DOUBLE ACTING - DOUBLE CYLINDER

MANUAL OVERRIDE TYPE

M, MH, MHD, MD, HPA, HPI



| ACTUATOR TYPE | $\varnothing A$ | $\varnothing B$ | $\varnothing C$ | $\varnothing D$ | E | F | F1 | G | H | L | $\varnothing M$ |
|----------------------------|-----------------|-----------------|-----------------|-----------------|----|------|----|-----|----|-----|-----------------|
| RH-15 RP-15 GO-15 | 70 | - | 102 | 20 | 6 | 22.8 | - | M10 | 12 | 60 | 118 |
| RH-30 RP-30 GO-30 | 85 | - | 125 | 35 | 10 | 38.3 | - | M12 | 17 | 70 | 143 |
| RH-60 RP-60 GO-60 | 85 | - | 125 | 40 | 12 | 43.3 | - | M12 | 17 | 80 | 143 |
| RH-120 RP-120 GO-120 | 100 | - | 140 | 50 | 14 | 53.8 | - | M16 | 22 | 100 | 170 |
| RH-240 RP-240 GO-240 | 130 | - | 165 | 65 | 18 | 69.4 | - | M20 | 26 | 130 | 200 |



THE SLOTS OF THE KEY ARE SHOWN WITH THE ACTUATOR IN CLOSED POSITION

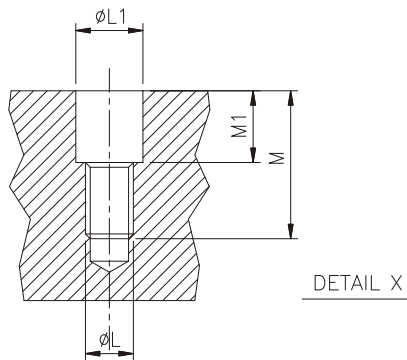
ALL DIMENSIONS ARE IN MM

rotork
fluid system

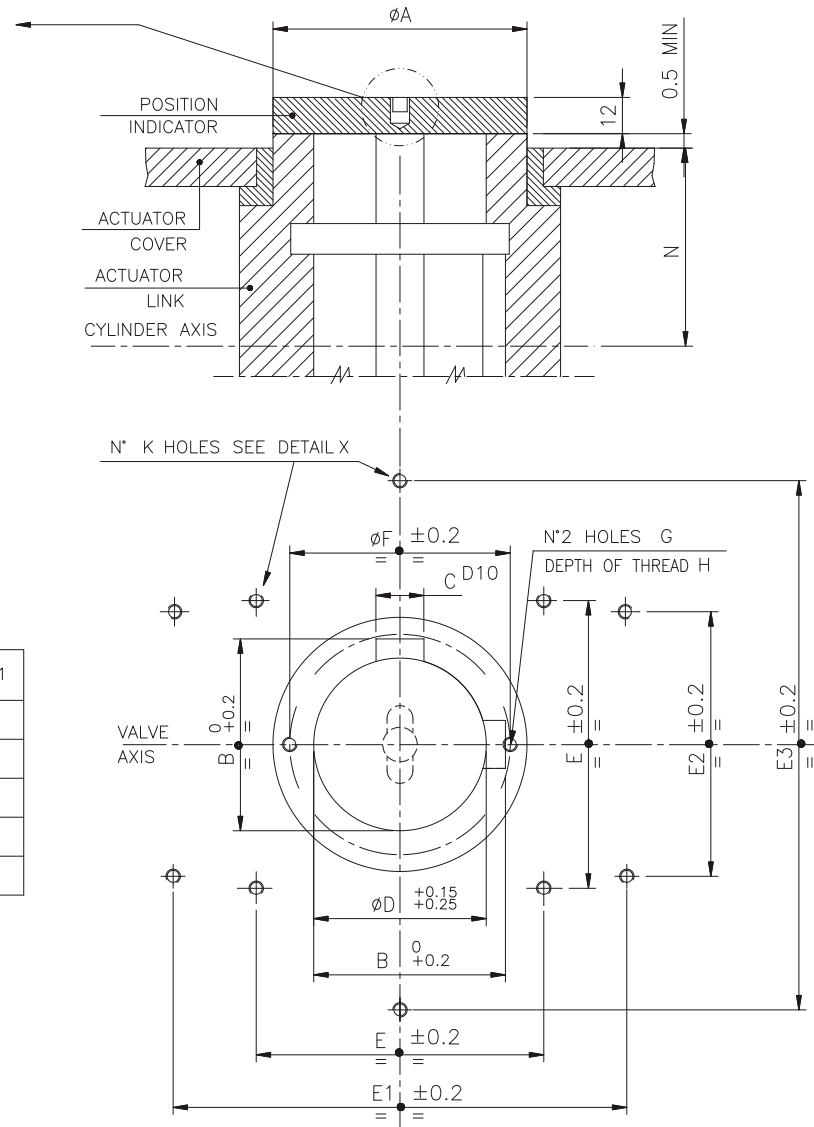
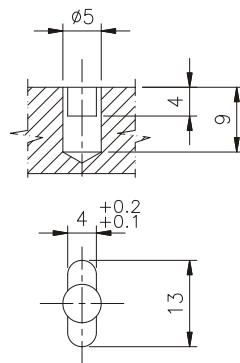
COUPLING DIMENSIONS

| | | | |
|------|----------|---------|-----------|
| 04 | 14.07.05 | BERNINI | BARSAOTTI |
| 03 | 29.11.04 | CATELLI | BERNINI |
| 02 | 05.03.98 | CAMONI | PISARONI |
| 01 | 02.06.97 | CAMONI | PISARONI |
| 00 | 12.09.95 | BARILLI | PISARONI |
| rev. | date | drawn | check |

GD00198-010



SLOT PARTICULAR FOR LIMITSWITCHES BOX COUPLING

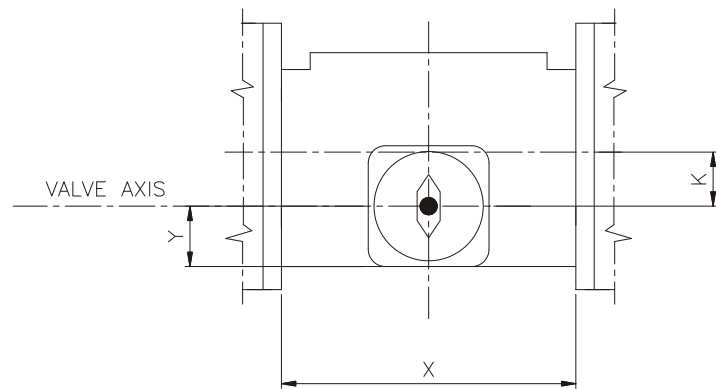
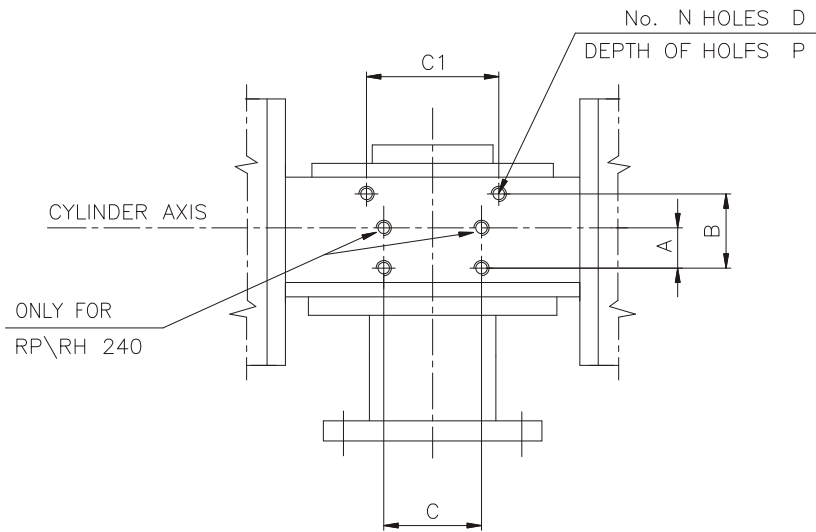


| ACTUATOR TYPE | ϕA | B | C | ϕD | E | E1 | E2 | E3 | ϕF | G | H | K | ϕL | $\phi L1$ | M | M1 |
|---------------|----------|------|----|----------|------|-------|----|-----|----------|----|----|---|----------|-----------|----|----|
| RP-RH-GO 015 | 35 | 22.8 | 6 | 20 | 49.5 | -- | -- | -- | 28 | M3 | 7 | 4 | M6 | 6.5 | 11 | 3 |
| RP-RH-GO 030 | 54 | 38.3 | 10 | 35 | 67.9 | -- | -- | -- | 46 | M4 | 8 | 4 | M6 | 6.5 | 19 | 6 |
| RP-RH-GO 060 | 64 | 43.3 | 12 | 40 | 76.4 | -- | -- | -- | 54 | M5 | 10 | 4 | M6 | 6.5 | 19 | 6 |
| RP-RH-GO 120 | 78 | 53.8 | 14 | 50 | -- | 109.1 | 63 | 126 | 66 | M6 | 12 | 6 | M6 | 6.5 | 21 | 6 |
| RP-RH-GO 240 | 95 | 69.4 | 18 | 65 | -- | 142 | 82 | 164 | 83 | M6 | 12 | 6 | M8 | 8.5 | 22 | 6 |

THE SLOTS OF THE KEY ARE SHOWN WITH THE ACTUATOR IN CLOSED POSITION

* FOR THE MODELS WITH 6 HOLES IT IS POSSIBLE TO USE 3 HOLES ONLY AT 120°

| | | | | |
|---------|--|----------|---------|----------|
| | COUPLING DIMENSIONS FOR MICROSWITCHES ENCLOSURE | | | |
| | 01 | 14.07.05 | BERNINI | BARSOITI |
| | 00 | 27.09.95 | Camoni | Barilli |
| | rev. | date | drawn | check |
| GD00227 | | | | |



| ACTUATOR TYPE | A | B | C | C1 | N | D | P | K | X | Y |
|----------------------------|----|-----|-----|-----|---|----|----|----|-----|----|
| RP 015 RH 015 GO 015 | 34 | 49 | 52 | 82 | 4 | M6 | 8 | 29 | 106 | 46 |
| RP 030 RH 030 GO 030 | 24 | 68 | 100 | 100 | 4 | M8 | 12 | 42 | 144 | 55 |
| RP 060 RH 060 GO 060 | 52 | 104 | 110 | 110 | 4 | M8 | 12 | 47 | 152 | 60 |
| RP 120 RH 120 GO 120 | 62 | 124 | 134 | 134 | 4 | M8 | 15 | 56 | 182 | 69 |
| RP 240 RH 240 GO 240 | 73 | 146 | 170 | 170 | 6 | M8 | 15 | 75 | 230 | 92 |

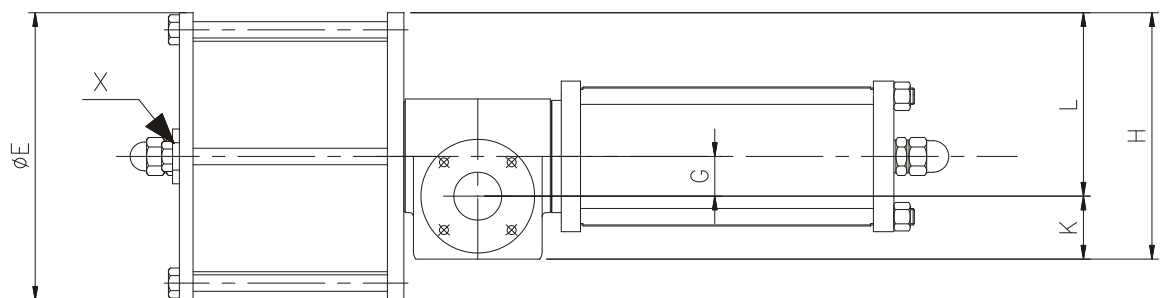
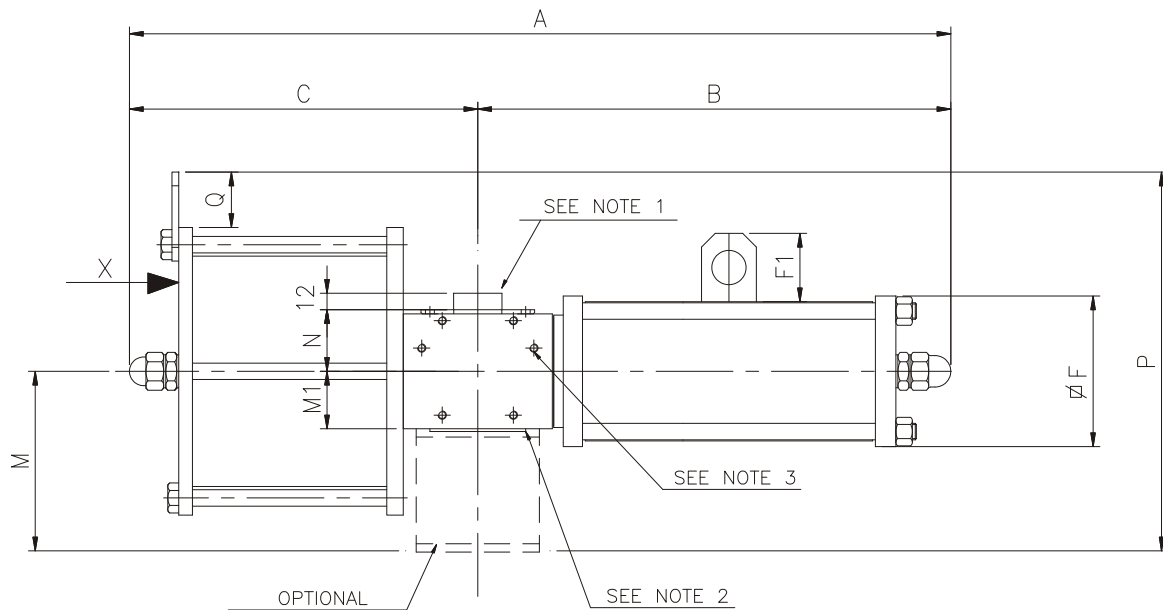
ALL DIMENSIONS ARE IN MM

rotork
fluid system

COUPLING ADAPTION
FOR POWER CONTROL UNITS

| | | | |
|------|----------|---------|-----------|
| 04 | 14.07.05 | BERNINI | BARSAOTTI |
| 03 | 17.12.99 | CATELLI | NICOLINI |
| 02 | 24.02.98 | CAMONI | PISARONI |
| 01 | 02.06.97 | CAMONI | PISARONI |
| 00 | 07.01.97 | CAMONI | BARILLI |
| rev. | date | drawn | check |

GD00198-050



NOTE 3 CONTROL PANEL INTERFACE ACCORDING TO DWG. GD00198-050

NOTE 2 ACTUATOR INTERFACE ACCORDING TO DWG. GD00198-010

NOTE 1 MICROSWITCHES GROUP INTERFACE ACCORDING TO DWG. GD00227

D ACCORDING TO VALVE FLANGE

X PNEUMATIC CONNECTION

rotork
fluid system

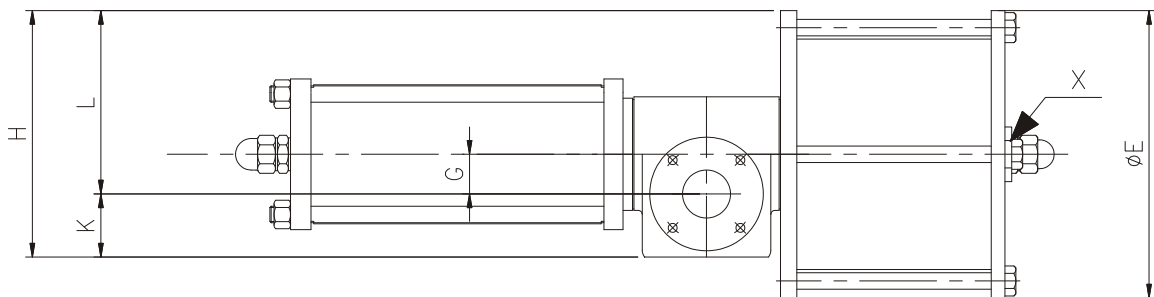
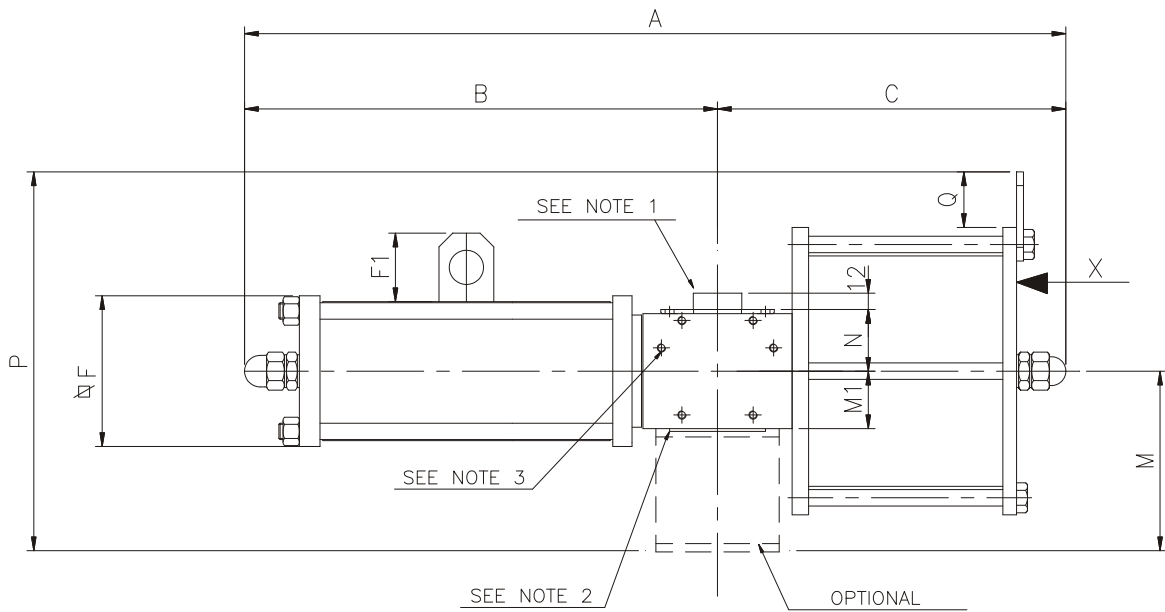
SINGLE ACTING PNEUMATIC ACTUATOR
FAIL TO OPEN
OVERALL DIMENSIONS

| | | | |
|------|----------|-------------|----------|
| 02 | 10.06.05 | BERNINI | BARSOTTI |
| 01 | 11.06.02 | Bongiovanni | PISARONI |
| 00 | 07.01.02 | Bongiovanni | PISARONI |
| rev. | date | drawn | check |

ORPA000ADC

RP - SPRING RETURN - FAIL OPEN - ORPA000ADC

| ACTUATOR MODEL | A | B | C | ØE | F | F1 | G | H | K | L | M1 | M | N | P | Q | Displ. (litres) | X (NPT) | Weight (Kg) |
|----------------|------|-----|-----|-----|-----|----|----|-----|----|-----|----|-----|----|-----|----|--------------------|------------|----------------|
| RP-240-250*/O0 | 1075 | 675 | 400 | 310 | 252 | 70 | 75 | 322 | 92 | 230 | 85 | 205 | 88 | 413 | 53 | 6.0 | 1/2" | 150 |
| RP-240-280*/O0 | 1075 | 675 | 400 | 340 | 252 | 70 | 75 | 337 | 92 | 245 | 85 | 205 | 88 | 416 | 41 | 7.6 | 1/2" | 167 |
| RP-240-300*/O0 | 1075 | 675 | 400 | 365 | 252 | 70 | 75 | 350 | 92 | 258 | 85 | 205 | 88 | 429 | 41 | 8.7 | 1/2" | 178 |
| RP-240-335*/O0 | 1075 | 675 | 400 | 410 | 252 | 70 | 75 | 372 | 92 | 280 | 85 | 215 | 88 | 468 | 48 | 10.8 | 1/2" | 186 |
| RP-240-350*/O0 | 1075 | 675 | 400 | 425 | 252 | 70 | 75 | 380 | 92 | 288 | 85 | 215 | 88 | 478 | 50 | 11.8 | 1/2" | 194 |
| RP-240-385*/O0 | 1075 | 675 | 400 | 465 | 252 | 70 | 75 | 400 | 92 | 308 | 85 | 235 | 88 | 516 | 48 | 14.3 | 1/2" | 209 |
| RP-240-435*/O0 | 1150 | 675 | 475 | 515 | 252 | 70 | 75 | 425 | 92 | 333 | 85 | 265 | 88 | 572 | 49 | 18.3 | 1/2" | 274 |
| RP-240-485*/O0 | 1140 | 675 | 465 | 570 | 252 | 70 | 75 | 452 | 92 | 360 | 85 | 295 | 88 | 625 | 45 | 22.7 | 1/2" | 314 |
| RP-240-250*/O1 | 1075 | 675 | 400 | 310 | 252 | 70 | 75 | 322 | 92 | 230 | 85 | 205 | 88 | 413 | 53 | 6.0 | 1/2" | 150 |
| RP-240-280*/O1 | 1075 | 675 | 400 | 340 | 252 | 70 | 75 | 337 | 92 | 245 | 85 | 205 | 88 | 416 | 41 | 7.6 | 1/2" | 167 |
| RP-240-300*/O1 | 1075 | 675 | 400 | 365 | 252 | 70 | 75 | 350 | 92 | 258 | 85 | 205 | 88 | 429 | 41 | 8.7 | 1/2" | 179 |
| RP-240-335*/O1 | 1075 | 675 | 400 | 410 | 252 | 70 | 75 | 372 | 92 | 280 | 85 | 215 | 88 | 468 | 48 | 10.8 | 1/2" | 187 |
| RP-240-350*/O1 | 1075 | 675 | 400 | 425 | 252 | 70 | 75 | 380 | 92 | 288 | 85 | 215 | 88 | 478 | 50 | 11.8 | 1/2" | 195 |
| RP-240-385*/O1 | 1075 | 675 | 400 | 465 | 252 | 70 | 75 | 400 | 92 | 308 | 85 | 235 | 88 | 516 | 48 | 14.3 | 1/2" | 209 |
| RP-240-435*/O1 | 1150 | 675 | 475 | 515 | 252 | 70 | 75 | 425 | 92 | 333 | 85 | 265 | 88 | 572 | 49 | 18.3 | 1/2" | 275 |
| RP-240-485*/O1 | 1140 | 675 | 465 | 570 | 252 | 70 | 75 | 452 | 92 | 360 | 85 | 295 | 88 | 625 | 45 | 22.7 | 1/2" | 315 |
| RP-240-250*/O2 | 1075 | 675 | 400 | 310 | 252 | 70 | 75 | 322 | 92 | 230 | 85 | 205 | 88 | 413 | 53 | 6.0 | 1/2" | 153 |
| RP-240-280*/O2 | 1075 | 675 | 400 | 340 | 252 | 70 | 75 | 337 | 92 | 245 | 85 | 205 | 88 | 416 | 41 | 7.6 | 1/2" | 170 |
| RP-240-300*/O2 | 1075 | 675 | 400 | 365 | 252 | 70 | 75 | 350 | 92 | 258 | 85 | 205 | 88 | 429 | 41 | 8.7 | 1/2" | 181 |
| RP-240-335*/O2 | 1075 | 675 | 400 | 410 | 252 | 70 | 75 | 372 | 92 | 280 | 85 | 215 | 88 | 468 | 48 | 10.8 | 1/2" | 189 |
| RP-240-350*/O2 | 1075 | 675 | 400 | 425 | 252 | 70 | 75 | 380 | 92 | 288 | 85 | 215 | 88 | 478 | 50 | 11.8 | 1/2" | 197 |
| RP-240-385*/O2 | 1075 | 675 | 400 | 465 | 252 | 70 | 75 | 400 | 92 | 308 | 85 | 235 | 88 | 516 | 48 | 14.3 | 1/2" | 212 |
| RP-240-435*/O2 | 1150 | 675 | 475 | 515 | 252 | 70 | 75 | 425 | 92 | 333 | 85 | 265 | 88 | 572 | 49 | 18.3 | 1/2" | 278 |
| RP-240-485*/O2 | 1140 | 675 | 465 | 570 | 252 | 70 | 75 | 452 | 92 | 360 | 85 | 295 | 88 | 625 | 45 | 22.7 | 1/2" | 318 |
| RP-240-250*/O3 | 1140 | 740 | 400 | 310 | 252 | 70 | 75 | 322 | 92 | 230 | 85 | 205 | 88 | 413 | 53 | 6.0 | 1/2" | 153 |
| RP-240-280*/O3 | 1140 | 740 | 400 | 340 | 330 | 70 | 75 | 337 | 92 | 245 | 85 | 205 | 88 | 416 | 41 | 7.6 | 1/2" | 170 |
| RP-240-300*/O3 | 1140 | 740 | 400 | 365 | 330 | 70 | 75 | 350 | 92 | 258 | 85 | 205 | 88 | 429 | 41 | 8.7 | 1/2" | 181 |
| RP-240-335*/O3 | 1140 | 740 | 400 | 410 | 330 | 70 | 75 | 372 | 92 | 280 | 85 | 215 | 88 | 468 | 48 | 10.8 | 1/2" | 189 |
| RP-240-350*/O3 | 1140 | 740 | 400 | 425 | 330 | 70 | 75 | 380 | 92 | 288 | 85 | 215 | 88 | 478 | 50 | 11.8 | 1/2" | 197 |
| RP-240-385*/O3 | 1140 | 740 | 400 | 465 | 330 | 70 | 75 | 400 | 92 | 308 | 85 | 235 | 88 | 516 | 48 | 14.3 | 1/2" | 212 |
| RP-240-435*/O3 | 1215 | 740 | 475 | 515 | 330 | 70 | 75 | 425 | 92 | 333 | 85 | 265 | 88 | 572 | 49 | 18.3 | 1/2" | 278 |
| RP-240-485*/O3 | 1205 | 740 | 465 | 570 | 330 | 70 | 75 | 452 | 92 | 360 | 85 | 295 | 88 | 625 | 45 | 22.7 | 1/2" | 318 |
| RP-240-250*/O4 | 1140 | 740 | 400 | 310 | 330 | 70 | 75 | 322 | 92 | 230 | 85 | 205 | 88 | 413 | 53 | 6.0 | 1/2" | 183 |
| RP-240-280*/O4 | 1140 | 740 | 400 | 340 | 330 | 70 | 75 | 337 | 92 | 245 | 85 | 205 | 88 | 416 | 41 | 7.6 | 1/2" | 200 |
| RP-240-300*/O4 | 1140 | 740 | 400 | 365 | 330 | 70 | 75 | 350 | 92 | 258 | 85 | 205 | 88 | 429 | 41 | 8.7 | 1/2" | 212 |
| RP-240-335*/O4 | 1140 | 740 | 400 | 410 | 330 | 70 | 75 | 372 | 92 | 280 | 85 | 215 | 88 | 468 | 48 | 10.8 | 1/2" | 220 |
| RP-240-350*/O4 | 1140 | 740 | 400 | 425 | 330 | 70 | 75 | 380 | 92 | 288 | 85 | 215 | 88 | 478 | 50 | 11.8 | 1/2" | 228 |
| RP-240-385*/O4 | 1140 | 740 | 400 | 465 | 330 | 70 | 75 | 400 | 92 | 308 | 85 | 235 | 88 | 516 | 48 | 14.3 | 1/2" | 243 |
| RP-240-435*/O4 | 1215 | 740 | 475 | 515 | 330 | 70 | 75 | 425 | 92 | 333 | 85 | 265 | 88 | 572 | 49 | 18.3 | 1/2" | 308 |
| RP-240-485*/O4 | 1205 | 740 | 465 | 570 | 330 | 70 | 75 | 452 | 92 | 360 | 85 | 295 | 88 | 625 | 45 | 22.7 | 1/2" | 348 |
| RP-240-250*/O5 | 1120 | 720 | 400 | 310 | 415 | 70 | 75 | 322 | 92 | 230 | 85 | 205 | 88 | 413 | 53 | 6.0 | 1/2" | 274 |
| RP-240-280*/O5 | 1120 | 720 | 400 | 340 | 415 | 70 | 75 | 337 | 92 | 245 | 85 | 205 | 88 | 416 | 41 | 7.6 | 1/2" | 291 |
| RP-240-300*/O5 | 1120 | 720 | 400 | 365 | 415 | 70 | 75 | 350 | 92 | 258 | 85 | 205 | 88 | 429 | 41 | 8.7 | 1/2" | 302 |
| RP-240-335*/O5 | 1120 | 720 | 400 | 410 | 415 | 70 | 75 | 372 | 92 | 280 | 85 | 215 | 88 | 468 | 48 | 10.8 | 1/2" | 310 |
| RP-240-350*/O5 | 1120 | 720 | 400 | 425 | 415 | 70 | 75 | 380 | 92 | 288 | 85 | 215 | 88 | 478 | 50 | 11.8 | 1/2" | 318 |
| RP-240-385*/O5 | 1120 | 720 | 400 | 465 | 415 | 70 | 75 | 400 | 92 | 308 | 85 | 235 | 88 | 516 | 48 | 14.3 | 1/2" | 333 |
| RP-240-435*/O5 | 1195 | 720 | 475 | 515 | 415 | 70 | 75 | 425 | 92 | 333 | 85 | 265 | 88 | 572 | 49 | 18.3 | 1/2" | 398 |
| RP-240-485*/O5 | 1185 | 720 | 465 | 570 | 415 | 70 | 75 | 452 | 92 | 360 | 85 | 295 | 88 | 625 | 45 | 22.7 | 1/2" | 438 |



NOTE 3 CONTROL PANEL INTERFACE ACCORDING TO DWG. GD00198-050

NOTE 2 ACTUATOR INTERFACE ACCORDING TO DWG. GD00198-010

NOTE 1 MICROSWITCHES GROUP INTERFACE ACCORDING TO DWG. GD00227

D ACCORDING TO VALVE FLANGE

X PNEUMATIC CONNECTION

rotork
fluid system

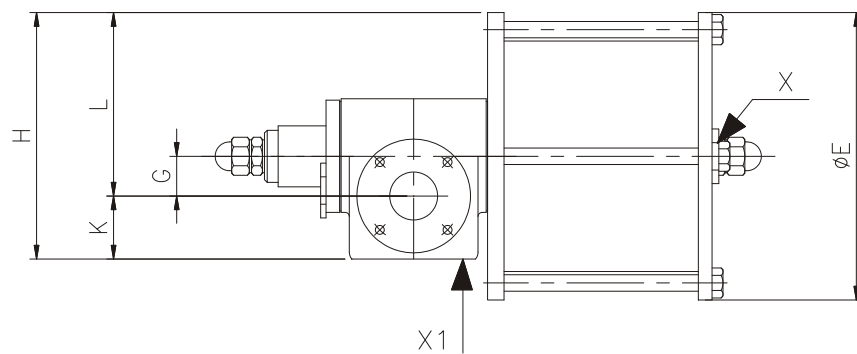
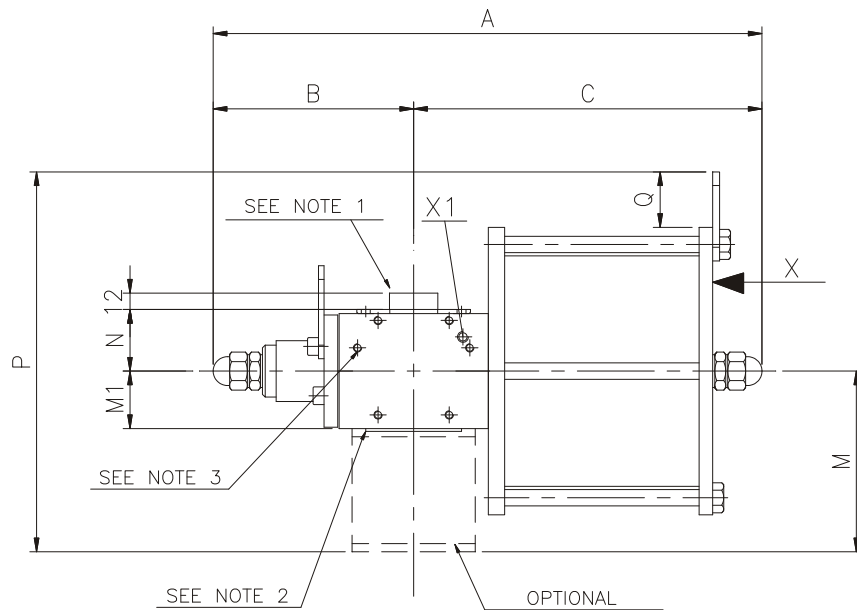
SINGLE ACTING PNEUMATIC ACTUATOR
FAIL TO CLOSE
OVERALL DIMENSIONS

| | | | |
|------|----------|----------|-----------|
| 02 | 10.06.05 | BERNINI | BARSAOTTI |
| 01 | 11.06.02 | FERDENZI | PISARONI |
| 00 | 15.03.01 | FERDENZI | PISARONI |
| rev. | date | drawn | check |

ORPC000ADC

RP - SPRING RETURN - FAIL CLOSE - ORPC000ADC

| ACTUATOR MODEL | A | B | C | ØE | F | F1 | G | H | K | L | M1 | M | N | P | Q | Displ. (litres) | X (NPT) | Weight (Kg) |
|----------------|------|-----|-----|-----|-----|----|----|-----|----|-----|----|-----|----|-----|----|--------------------|------------|----------------|
| RP-240-250*/C0 | 1075 | 675 | 400 | 310 | 252 | 70 | 75 | 322 | 92 | 230 | 85 | 205 | 88 | 413 | 53 | 6.0 | 1/2" | 150 |
| RP-240-280*/C0 | 1075 | 675 | 400 | 340 | 252 | 70 | 75 | 337 | 92 | 245 | 85 | 205 | 88 | 416 | 41 | 7.6 | 1/2" | 167 |
| RP-240-300*/C0 | 1075 | 675 | 400 | 365 | 252 | 70 | 75 | 350 | 92 | 258 | 85 | 205 | 88 | 429 | 41 | 8.7 | 1/2" | 178 |
| RP-240-335*/C0 | 1075 | 675 | 400 | 410 | 252 | 70 | 75 | 372 | 92 | 280 | 85 | 215 | 88 | 468 | 48 | 10.8 | 1/2" | 186 |
| RP-240-350*/C0 | 1075 | 675 | 400 | 425 | 252 | 70 | 75 | 380 | 92 | 288 | 85 | 215 | 88 | 478 | 50 | 11.8 | 1/2" | 194 |
| RP-240-385*/C0 | 1075 | 675 | 400 | 465 | 252 | 70 | 75 | 400 | 92 | 308 | 85 | 235 | 88 | 516 | 48 | 14.3 | 1/2" | 209 |
| RP-240-435*/C0 | 1150 | 675 | 475 | 515 | 252 | 70 | 75 | 425 | 92 | 333 | 85 | 265 | 88 | 572 | 49 | 18.3 | 1/2" | 274 |
| RP-240-485*/C0 | 1140 | 675 | 465 | 570 | 252 | 70 | 75 | 452 | 92 | 360 | 85 | 295 | 88 | 625 | 45 | 22.7 | 1/2" | 314 |
| RP-240-250*/C1 | 1075 | 675 | 400 | 310 | 252 | 70 | 75 | 322 | 92 | 230 | 85 | 205 | 88 | 413 | 53 | 6.0 | 1/2" | 150 |
| RP-240-280*/C1 | 1075 | 675 | 400 | 340 | 252 | 70 | 75 | 337 | 92 | 245 | 85 | 205 | 88 | 416 | 41 | 7.6 | 1/2" | 167 |
| RP-240-300*/C1 | 1075 | 675 | 400 | 365 | 252 | 70 | 75 | 350 | 92 | 258 | 85 | 205 | 88 | 429 | 41 | 8.7 | 1/2" | 179 |
| RP-240-335*/C1 | 1075 | 675 | 400 | 410 | 252 | 70 | 75 | 372 | 92 | 280 | 85 | 215 | 88 | 468 | 48 | 10.8 | 1/2" | 187 |
| RP-240-350*/C1 | 1075 | 675 | 400 | 425 | 252 | 70 | 75 | 380 | 92 | 288 | 85 | 215 | 88 | 478 | 50 | 11.8 | 1/2" | 195 |
| RP-240-385*/C1 | 1075 | 675 | 400 | 465 | 252 | 70 | 75 | 400 | 92 | 308 | 85 | 235 | 88 | 516 | 48 | 14.3 | 1/2" | 209 |
| RP-240-435*/C1 | 1150 | 675 | 475 | 515 | 252 | 70 | 75 | 425 | 92 | 333 | 85 | 265 | 88 | 572 | 49 | 18.3 | 1/2" | 275 |
| RP-240-485*/C1 | 1140 | 675 | 465 | 570 | 252 | 70 | 75 | 452 | 92 | 360 | 85 | 295 | 88 | 625 | 45 | 22.7 | 1/2" | 315 |
| RP-240-250*/C2 | 1075 | 675 | 400 | 310 | 252 | 70 | 75 | 322 | 92 | 230 | 85 | 205 | 88 | 413 | 53 | 6.0 | 1/2" | 153 |
| RP-240-280*/C2 | 1075 | 675 | 400 | 340 | 252 | 70 | 75 | 337 | 92 | 245 | 85 | 205 | 88 | 416 | 41 | 7.6 | 1/2" | 170 |
| RP-240-300*/C2 | 1075 | 675 | 400 | 365 | 252 | 70 | 75 | 350 | 92 | 258 | 85 | 205 | 88 | 429 | 41 | 8.7 | 1/2" | 181 |
| RP-240-335*/C2 | 1075 | 675 | 400 | 410 | 252 | 70 | 75 | 372 | 92 | 280 | 85 | 215 | 88 | 468 | 48 | 10.8 | 1/2" | 189 |
| RP-240-350*/C2 | 1075 | 675 | 400 | 425 | 252 | 70 | 75 | 380 | 92 | 288 | 85 | 215 | 88 | 478 | 50 | 11.8 | 1/2" | 197 |
| RP-240-385*/C2 | 1075 | 675 | 400 | 465 | 252 | 70 | 75 | 400 | 92 | 308 | 85 | 235 | 88 | 516 | 48 | 14.3 | 1/2" | 212 |
| RP-240-435*/C2 | 1150 | 675 | 475 | 515 | 252 | 70 | 75 | 425 | 92 | 333 | 85 | 265 | 88 | 572 | 49 | 18.3 | 1/2" | 278 |
| RP-240-485*/C2 | 1140 | 675 | 465 | 570 | 252 | 70 | 75 | 452 | 92 | 360 | 85 | 295 | 88 | 625 | 45 | 22.7 | 1/2" | 318 |
| RP-240-250*/C3 | 1140 | 740 | 400 | 310 | 252 | 70 | 75 | 322 | 92 | 230 | 85 | 205 | 88 | 413 | 53 | 6.0 | 1/2" | 153 |
| RP-240-280*/C3 | 1140 | 740 | 400 | 340 | 330 | 70 | 75 | 337 | 92 | 245 | 85 | 205 | 88 | 416 | 41 | 7.6 | 1/2" | 170 |
| RP-240-300*/C3 | 1140 | 740 | 400 | 365 | 330 | 70 | 75 | 350 | 92 | 258 | 85 | 205 | 88 | 429 | 41 | 8.7 | 1/2" | 181 |
| RP-240-335*/C3 | 1140 | 740 | 400 | 410 | 330 | 70 | 75 | 372 | 92 | 280 | 85 | 215 | 88 | 468 | 48 | 10.8 | 1/2" | 189 |
| RP-240-350*/C3 | 1140 | 740 | 400 | 425 | 330 | 70 | 75 | 380 | 92 | 288 | 85 | 215 | 88 | 478 | 50 | 11.8 | 1/2" | 197 |
| RP-240-385*/C3 | 1140 | 740 | 400 | 465 | 330 | 70 | 75 | 400 | 92 | 308 | 85 | 235 | 88 | 516 | 48 | 14.3 | 1/2" | 212 |
| RP-240-435*/C3 | 1215 | 740 | 475 | 515 | 330 | 70 | 75 | 425 | 92 | 333 | 85 | 265 | 88 | 572 | 49 | 18.3 | 1/2" | 278 |
| RP-240-485*/C3 | 1205 | 740 | 465 | 570 | 330 | 70 | 75 | 452 | 92 | 360 | 85 | 295 | 88 | 625 | 45 | 22.7 | 1/2" | 318 |
| RP-240-250*/C4 | 1140 | 740 | 400 | 310 | 330 | 70 | 75 | 322 | 92 | 230 | 85 | 205 | 88 | 413 | 53 | 6.0 | 1/2" | 183 |
| RP-240-280*/C4 | 1140 | 740 | 400 | 340 | 330 | 70 | 75 | 337 | 92 | 245 | 85 | 205 | 88 | 416 | 41 | 7.6 | 1/2" | 200 |
| RP-240-300*/C4 | 1140 | 740 | 400 | 365 | 330 | 70 | 75 | 350 | 92 | 258 | 85 | 205 | 88 | 429 | 41 | 8.7 | 1/2" | 212 |
| RP-240-335*/C4 | 1140 | 740 | 400 | 410 | 330 | 70 | 75 | 372 | 92 | 280 | 85 | 215 | 88 | 468 | 48 | 10.8 | 1/2" | 220 |
| RP-240-350*/C4 | 1140 | 740 | 400 | 425 | 330 | 70 | 75 | 380 | 92 | 288 | 85 | 215 | 88 | 478 | 50 | 11.8 | 1/2" | 228 |
| RP-240-385*/C4 | 1140 | 740 | 400 | 465 | 330 | 70 | 75 | 400 | 92 | 308 | 85 | 235 | 88 | 516 | 48 | 14.3 | 1/2" | 243 |
| RP-240-435*/C4 | 1215 | 740 | 475 | 515 | 330 | 70 | 75 | 425 | 92 | 333 | 85 | 265 | 88 | 572 | 49 | 18.3 | 1/2" | 308 |
| RP-240-485*/C4 | 1205 | 740 | 465 | 570 | 330 | 70 | 75 | 452 | 92 | 360 | 85 | 295 | 88 | 625 | 45 | 22.7 | 1/2" | 348 |
| RP-240-250*/C5 | 1120 | 720 | 400 | 310 | 415 | 70 | 75 | 322 | 92 | 230 | 85 | 205 | 88 | 413 | 53 | 6.0 | 1/2" | 274 |
| RP-240-280*/C5 | 1120 | 720 | 400 | 340 | 415 | 70 | 75 | 337 | 92 | 245 | 85 | 205 | 88 | 416 | 41 | 7.6 | 1/2" | 291 |
| RP-240-300*/C5 | 1120 | 720 | 400 | 365 | 415 | 70 | 75 | 350 | 92 | 258 | 85 | 205 | 88 | 429 | 41 | 8.7 | 1/2" | 302 |
| RP-240-335*/C5 | 1120 | 720 | 400 | 410 | 415 | 70 | 75 | 372 | 92 | 280 | 85 | 215 | 88 | 468 | 48 | 10.8 | 1/2" | 310 |
| RP-240-350*/C5 | 1120 | 720 | 400 | 425 | 415 | 70 | 75 | 380 | 92 | 288 | 85 | 215 | 88 | 478 | 50 | 11.8 | 1/2" | 318 |
| RP-240-385*/C5 | 1120 | 720 | 400 | 465 | 415 | 70 | 75 | 400 | 92 | 308 | 85 | 235 | 88 | 516 | 48 | 14.3 | 1/2" | 333 |
| RP-240-435*/C5 | 1195 | 720 | 475 | 515 | 415 | 70 | 75 | 425 | 92 | 333 | 85 | 265 | 88 | 572 | 49 | 18.3 | 1/2" | 398 |
| RP-240-485*/C5 | 1185 | 720 | 465 | 570 | 415 | 70 | 75 | 452 | 92 | 360 | 85 | 295 | 88 | 625 | 45 | 22.7 | 1/2" | 438 |



NOTE 3 CONTROL PANEL INTERFACE ACCORDING TO DWG. GD00198-050

NOTE 2 ACTUATOR INTERFACE ACCORDING TO DWG. GD00198-010

NOTE 1 MICROSWITCHES GROUP INTERFACE ACCORDING TO DWG. GD00227

D ACCORDING TO VALVE FLANGE

X-X1 PNEUMATIC CONNECTION

rotork
fluid system

DOUBLE ACTING PNEUMATIC ACTUATOR
OVERALL DIMENSIONS

| | | | |
|------|----------|-------------|----------|
| 02 | 10.06.05 | BERNINI | BARSOTTI |
| 01 | 11.06.02 | Bongiovanni | PISARONI |
| 00 | 08.01.02 | Bongiovanni | PISARONI |
| rev. | date | drawn | check |

ORPD000ADC

RP - DOUBLE ACTING - ORPD000ADC

| ACTUATOR MODEL | A | B | C | ØE | G | H | K | L | M1 | M | N | P | Q | Displ. (litres) | X (NPT) | X1 (GAS) | Weight (Kg) |
|----------------|-----|-----|-----|-----|----|-----|----|-----|----|-----|----|-----|----|--------------------|------------|-------------|----------------|
| RP-015-080*/D1 | 380 | 170 | 210 | 120 | 29 | 135 | 46 | 89 | 42 | 160 | 44 | 251 | 31 | 0.2 | 1/4" | 1/4" | 9 |
| RP-015-100*/D1 | 390 | 170 | 220 | 140 | 29 | 145 | 46 | 99 | 42 | 160 | 44 | 260 | 30 | 0.4 | 1/4" | 1/4" | 11 |
| RP-015-125*/D1 | 390 | 170 | 220 | 165 | 29 | 158 | 46 | 112 | 42 | 160 | 44 | 273 | 30 | 0.6 | 1/4" | 1/4" | 13 |
| RP-015-160*/D1 | 395 | 170 | 225 | 210 | 29 | 180 | 46 | 134 | 42 | 160 | 44 | 293 | 28 | 0.9 | 3/8" | 1/4" | 18 |
| RP-015-180*/D1 | 385 | 170 | 215 | 240 | 29 | 195 | 46 | 149 | 42 | 160 | 44 | 306 | 26 | 1.2 | 3/8" | 1/4" | 20 |
| RP-015-200*/D1 | 385 | 170 | 215 | 260 | 29 | 205 | 46 | 159 | 42 | 160 | 44 | 315 | 25 | 1.5 | 3/8" | 1/4" | 32 |
| RP-030-125*/D1 | 455 | 195 | 260 | 165 | 42 | 180 | 55 | 125 | 51 | 170 | 53 | 283 | 30 | 0.8 | 1/4" | 1/4" | 19 |
| RP-030-160*/D1 | 470 | 195 | 275 | 210 | 42 | 202 | 55 | 147 | 51 | 170 | 53 | 316 | 41 | 1.3 | 3/8" | 1/4" | 25 |
| RP-030-180*/D1 | 465 | 195 | 270 | 240 | 42 | 217 | 55 | 162 | 51 | 170 | 53 | 329 | 39 | 1.7 | 3/8" | 1/4" | 34 |
| RP-030-200*/D1 | 465 | 195 | 270 | 260 | 42 | 227 | 55 | 172 | 51 | 170 | 53 | 341 | 41 | 2.1 | 3/8" | 1/4" | 39 |
| RP-060-180*/D1 | 495 | 220 | 275 | 240 | 47 | 227 | 60 | 167 | 60 | 180 | 62 | 339 | 39 | 2.0 | 3/8" | 1/4" | 38 |
| RP-060-200*/D1 | 495 | 220 | 275 | 260 | 47 | 237 | 60 | 177 | 60 | 180 | 62 | 351 | 41 | 2.4 | 3/8" | 1/4" | 43 |
| RP-060-235*/D1 | 550 | 220 | 330 | 295 | 47 | 255 | 60 | 195 | 60 | 180 | 62 | 369 | 41 | 3.3 | 1/2" | 1/4" | 53 |
| RP-060-250*/D1 | 550 | 220 | 330 | 310 | 47 | 262 | 60 | 202 | 60 | 180 | 62 | 376 | 41 | 3.8 | 1/2" | 1/4" | 55 |
| RP-060-280*/D1 | 560 | 220 | 340 | 340 | 47 | 277 | 60 | 217 | 60 | 180 | 62 | 391 | 41 | 4.7 | 1/2" | 1/4" | 60 |
| RP-120-200*/D1 | 570 | 270 | 300 | 260 | 56 | 255 | 69 | 186 | 70 | 190 | 73 | 361 | 41 | 2.9 | 3/8" | 1/4" | 55 |
| RP-120-235*/D1 | 615 | 270 | 345 | 295 | 56 | 273 | 69 | 204 | 70 | 190 | 73 | 379 | 41 | 4.0 | 1/2" | 1/4" | 63 |
| RP-120-250*/D1 | 615 | 270 | 345 | 310 | 56 | 280 | 69 | 211 | 70 | 190 | 73 | 386 | 41 | 4.5 | 1/2" | 1/4" | 65 |
| RP-120-280*/D1 | 620 | 270 | 350 | 340 | 56 | 295 | 69 | 226 | 70 | 190 | 73 | 401 | 41 | 5.7 | 1/2" | 1/4" | 82 |
| RP-120-300*/D1 | 620 | 270 | 350 | 365 | 56 | 308 | 69 | 239 | 70 | 190 | 73 | 414 | 41 | 6.5 | 1/2" | 1/4" | 93 |
| RP-240-250*/D1 | 750 | 350 | 400 | 310 | 75 | 322 | 92 | 230 | 85 | 205 | 88 | 413 | 53 | 6.0 | 1/2" | 3/8" | 90 |
| RP-240-280*/D1 | 750 | 350 | 400 | 340 | 75 | 337 | 92 | 245 | 85 | 205 | 88 | 416 | 41 | 7.6 | 1/2" | 3/8" | 107 |
| RP-240-300*/D1 | 750 | 350 | 400 | 365 | 75 | 350 | 92 | 258 | 85 | 205 | 88 | 429 | 41 | 8.7 | 1/2" | 3/8" | 118 |
| RP-240-335*/D1 | 750 | 350 | 400 | 410 | 75 | 372 | 92 | 280 | 85 | 215 | 88 | 468 | 48 | 10.8 | 1/2" | 3/8" | 126 |
| RP-240-350*/D1 | 750 | 350 | 400 | 425 | 75 | 380 | 92 | 288 | 85 | 215 | 88 | 478 | 50 | 11.8 | 1/2" | 3/8" | 134 |
| RP-240-385*/D1 | 750 | 350 | 400 | 465 | 75 | 400 | 92 | 308 | 85 | 235 | 88 | 516 | 48 | 14.3 | 1/2" | 3/8" | 149 |
| RP-240-435*/D1 | 825 | 350 | 475 | 515 | 75 | 425 | 92 | 333 | 85 | 265 | 88 | 572 | 49 | 18.3 | 1/2" | 3/8" | 215 |
| RP-240-485*/D1 | 515 | 350 | 165 | 570 | 75 | 452 | 92 | 360 | 85 | 295 | 88 | 625 | 45 | 22.7 | 1/2" | 3/8" | 255 |

Centres of Excellence

Australia

Bayswater, Victoria
Tel: +61 (0) 3 9729 8882
Fax: +61 (0) 3 9729 8884
sales@rfsaustralia.com

Canada

Mississauga, Ontario
Tel: +1 905 363 0313
Fax: +1 905 363 0320
info@rotork.ca

Italy

Tossignano - Lucca
Tel: +39 0583 93061
Fax: +39 0583 934612
fluid@fluidsystem.it

United States

Rochester, New York
Tel: +1 585 328 1550
Fax: +1 585 328 5848
info@rotork.com

Singapore

Tel: + 65 6457 1233
Fax: + 65 6457 6011
mail@rotork.com.sg

Canada

Calgary, Alberta
Tel: +1 403 569 9455
Fax: +1 403 569 9414
info@rotork.ca

Germany

Melle
Tel: +49 (0)5422 9414-0
Fax: +49 (0)5422 9414-10
home@pc-intertechnik.com

United Kingdom

Bramley, Leeds
Tel: +44 (0)113 236 3312
Fax: +44 (0)113 205 7266
sales@rotorkfluidsystem.co.uk

United States

Houston, Texas
Tel: +1 713 856 5640
Fax: +1 713 856 8127
info@rotork.com